

### Anti-ABHD12 antibody ab68949

[2 References](#) [画像数 1](#)

#### 製品の概要

---

製品名	Anti-ABHD12 antibody
製品の詳細	Mouse polyclonal to ABHD12
由来種	Mouse
アプリケーション	<b>適用あり:</b> WB
種交差性	<b>交差種:</b> Human
免疫原	Recombinant full length protein within Human ABHD12. The exact immunogen sequence used to generate this antibody is proprietary information. If additional detail on the immunogen is needed to determine the suitability of the antibody for your needs, please <b>contact</b> our Scientific Support team to discuss your requirements.
ポジティブ・コントロール	ABHD12-transfected 293T cell lysate
特記事項	<p>The Life Science industry has been in the grips of a reproducibility crisis for a number of years. Abcam is leading the way in addressing this with our range of recombinant monoclonal antibodies and knockout edited cell lines for gold-standard validation. Please check that this product meets your needs before purchasing.</p> <p>If you have any questions, special requirements or concerns, please send us an inquiry and/or contact our Support team ahead of purchase. Recommended alternatives for this product can be found below, along with publications, customer reviews and Q&amp;As</p>

#### 製品の特性

---

製品の状態	Liquid
保存方法	Shipped at 4°C. Upon delivery aliquot and store at -20°C or -80°C. Avoid repeated freeze / thaw cycles.
バッファー	pH: 7.40 Constituent: 100% PBS
精製度	Protein A purified
ポリモノ	ポリクローナル
アイソタイプ	IgG

#### アプリケーション

---

## The Abpromise guarantee

**Abpromise保証は、次のテスト済みアプリケーションにおけるab68949の使用に適用されます**

アプリケーションノートには、推奨の開始希釈率がありますが、適切な希釈率につきましてはご検討ください。

アプリケーション	Abreviews	特記事項
WB		1/500 - 1/1000. Detects a band of approximately 45 kDa (predicted molecular weight: 45 kDa).

## ターゲット情報

### 機能

Has 2-arachidonoylglycerol hydrolase activity (By similarity). May be a regulator of endocannabinoid signaling pathways.

### 関連疾患

Defects in ABHD12 are the cause of polyneuropathy hearing loss ataxia retinitis pigmentosa and cataract (PHARC) [MIM:612674]. PHARC is a slowly progressive neurologic disorder with a variable phenotype resembling Refsum disease. Clinical features include sensorineural hearing loss, visual problems related to cataracts, retinitis pigmentosa, pes cavus, ataxic and/or spastic gait disturbances with a progressive sensorimotor peripheral neuropathy. Other features include hyporeflexia, hyperreflexia, extensor plantar responses.

### 配列類似性

Belongs to the serine esterase family.

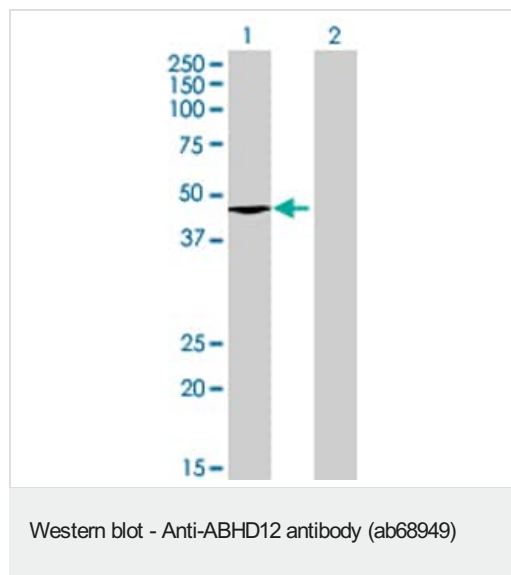
### 翻訳後修飾

Glycosylated.

### 細胞内局在

Membrane.

## 画像



**All lanes :** Anti-ABHD12 antibody (ab68949) at 1/500 dilution

**Lane 1 :** ABHD12 transfected 293T cell lysate

**Lane 2 :** Non-transfected 293T cell lysate

Lysates/proteins at 25 µg per lane.

### Secondary

**All lanes :** Goat Anti-Mouse IgG (H&L)-HRP conjugated at 1/2500 dilution

**Predicted band size:** 45 kDa

**Observed band size:** 45 kDa

**Please note:** All products are "FOR RESEARCH USE ONLY. NOT FOR USE IN DIAGNOSTIC PROCEDURES"

**Our Abpromise to you: Quality guaranteed and expert technical support**

- Replacement or refund for products not performing as stated on the datasheet
- Valid for 12 months from date of delivery
- Response to your inquiry within 24 hours
  
- We provide support in Chinese, English, French, German, Japanese and Spanish
- Extensive multi-media technical resources to help you
- We investigate all quality concerns to ensure our products perform to the highest standards

If the product does not perform as described on this datasheet, we will offer a refund or replacement. For full details of the Abpromise, please visit <https://www.abcam.co.jp/abpromise> or contact our technical team.

### **Terms and conditions**

---

- Guarantee only valid for products bought direct from Abcam or one of our authorized distributors