


Anti-ABCG4 antibody ab101528

2 References [画像数 1](#)

医薬用外劇物

製品の概要

製品名	Anti-ABCG4 antibody
製品の詳細	Rabbit polyclonal to ABCG4
由来種	Rabbit
アプリケーション	適用あり: WB
種交差性	交差種: Human 交差が予測される動物種: Mouse, Rat, Cow 
免疫原	Recombinant fragment within Human ABCG4 aa 1-200. The exact immunogen sequence used to generate this antibody is proprietary information. If additional detail on the immunogen is needed to determine the suitability of the antibody for your needs, please contact our Scientific Support team to discuss your requirements. AAH41091 Database link: Q9H172
ポジティブ・コントロール	MCF7 whole cell lysate
特記事項	<p>The Life Science industry has been in the grips of a reproducibility crisis for a number of years. Abcam is leading the way in addressing this with our range of recombinant monoclonal antibodies and knockout edited cell lines for gold-standard validation. Please check that this product meets your needs before purchasing.</p> <p>If you have any questions, special requirements or concerns, please send us an inquiry and/or contact our Support team ahead of purchase. Recommended alternatives for this product can be found below, along with publications, customer reviews and Q&As</p>

製品の特性

製品の状態	Liquid
保存方法	Shipped at 4°C. Upon delivery aliquot. Store at -20°C or -80°C. Avoid freeze / thaw cycle.
バッファー	pH: 7.00 Preservative: 0.01% Thimerosal (merthiolate) Constituents: 1.21% Tris, 0.75% Glycine, 20% Glycerol (glycerin, glycerine)
精製度	Immunogen affinity purified
ポリ/モノ	ポリクローナル
アイソタイプ	IgG

アプリケーション

The Abpromise guarantee Abpromise保証は、 次のテスト済みアプリケーションにおけるab101528の使用に適用されます
アプリケーションノートには、推奨の開始希釈率がありますが、適切な希釈率につきましてはご検討ください。

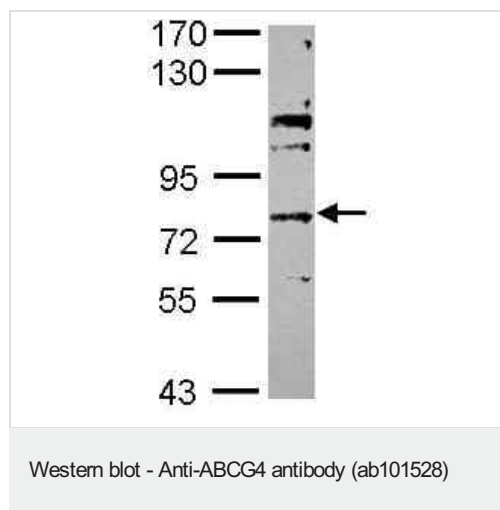
アプリケーション	Abreviews	特記事項
WB		1/1000 - 1/10000. Predicted molecular weight: 72 kDa.

ターゲット情報

関連性 The ATP binding cassette (ABC) superfamily of membrane transporters is one of the largest protein classes known, and counts for numerous proteins involved in trafficking of biological molecules across membranes. ABCG4 protein is highly expressed in both human and mouse brain, it is a 646aa molecule in human (chr 11q23) and mouse. It is an integral membrane protein may be involved in macrophage lipid homeostasis. The ABCG4 protein's abundant expression in brain and close evolutionary relationship to the other members of the subfamily suggests a potential role in cholesterol transport.

細胞内局在 Membrane; Multi-pass membrane protein

画像



Anti-ABCG4 antibody (ab101528) at 1/5000 dilution + MCF7 whole cell lysate at 30 µg

Predicted band size: 72 kDa

7.5% SDS-PAGE

Please note: All products are "FOR RESEARCH USE ONLY. NOT FOR USE IN DIAGNOSTIC PROCEDURES"

Our Abpromise to you: Quality guaranteed and expert technical support

- Replacement or refund for products not performing as stated on the datasheet
- Valid for 12 months from date of delivery
- Response to your inquiry within 24 hours
- We provide support in Chinese, English, French, German, Japanese and Spanish

- Extensive multi-media technical resources to help you
- We investigate all quality concerns to ensure our products perform to the highest standards

If the product does not perform as described on this datasheet, we will offer a refund or replacement. For full details of the Abpromise, please visit <https://www.abcam.co.jp/abpromise> or contact our technical team.

Terms and conditions

- Guarantee only valid for products bought direct from Abcam or one of our authorized distributors