


Anti-ABCE1 antibody ab32270

7 References [画像数 3](#)

製品の概要

製品名	Anti-ABCE1 antibody
製品の詳細	Rabbit polyclonal to ABCE1
由来種	Rabbit
アプリケーション	適用あり: ICC/IF, WB
種交差性	交差種: Mouse, Rat, Human 交差が予測される動物種: Chicken, Dog, Zebrafish 
免疫原	Synthetic peptide within Human ABCE1 aa 550 to the C-terminus conjugated to keyhole limpet haemocyanin. The exact sequence is proprietary. Database link: P61221 (Peptide available as ab32269)
ポジティブ・コントロール	HeLa (Human epithelial carcinoma cell line) Whole Cell Lysate Jurkat (Human T cell lymphoblast-like cell line) Whole Cell Lysate A431 (Human epithelial carcinoma cell line) Whole Cell Lysate MEF1 (Mouse embryonic fibroblast cell line) Whole Cell Lysate Testis (Mouse) Tissue Lysate - normal tissue PC12 (Rat adrenal pheochromocytoma cell line) Whole Cell Lysate
特記事項	<p>The Life Science industry has been in the grips of a reproducibility crisis for a number of years. Abcam is leading the way in addressing this with our range of recombinant monoclonal antibodies and knockout edited cell lines for gold-standard validation. Please check that this product meets your needs before purchasing.</p> <p>If you have any questions, special requirements or concerns, please send us an inquiry and/or contact our Support team ahead of purchase. Recommended alternatives for this product can be found below, along with publications, customer reviews and Q&As</p>

製品の特性

製品の状態	Liquid
保存方法	Shipped at 4°C. Store at +4°C short term (1-2 weeks). Upon delivery aliquot. Store at -20°C or -80°C. Avoid freeze / thaw cycle.
バッファー	pH: 7.40 Preservative: 0.02% Sodium azide Constituent: PBS
Batches of this product that have a concentration < 1mg/ml may have BSA added as a stabilising	

agent. If you would like information about the formulation of a specific lot, please contact our scientific support team who will be happy to help.

精製度	Immunogen affinity purified
ポリモノ	ポリクローナル
アイソタイプ	IgG

アプリケーション

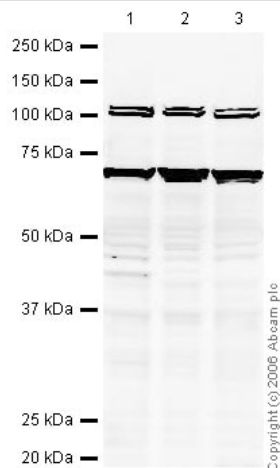
The Abpromise guarantee Abpromise保証は、次のテスト済みアプリケーションにおけるab32270の使用に適用されます
アプリケーションノートには、推奨の開始希釈率がありますが、適切な希釈率につきましてはご検討ください。

アプリケーション	Abreviews	特記事項
ICC/IF		Use a concentration of 1 µg/ml.
WB		Use a concentration of 1 µg/ml. Detects a band of approximately 70 kDa (predicted molecular weight: 67 kDa).

ターゲット情報

機能	Antagonizes the binding of 2-5A (5'-phosphorylated 2',5'-linked oligoadenylates) by RNase L through direct interaction with RNase L and therefore inhibits its endoribonuclease activity. May play a central role in the regulation of mRNA turnover. Antagonizes the anti-viral effect of the interferon-regulated 2-5A/RNase L pathway. May act as a chaperone for post-translational events during HIV-1 capsid assembly.
配列類似性	Belongs to the ABC transporter superfamily. ABCE family. Contains 2 4Fe-4S ferredoxin-type domains. Contains 2 ABC transporter domains.
細胞内局在	Cytoplasm. Mitochondrion. Localized to clusters of virus formation at the plasma membrane.

画像



Western blot - Anti-ABCE1 antibody (ab32270)

All lanes : Anti-ABCE1 antibody (ab32270) at 1 µg/ml

Lane 1 : HeLa (Human epithelial carcinoma cell line) Whole Cell Lysate

Lane 2 : Jurkat whole cell lysate (**ab7899**) at 20 µg

Lane 3 : A-431 whole cell lysate (**ab7909**) at 20 µg

Secondary

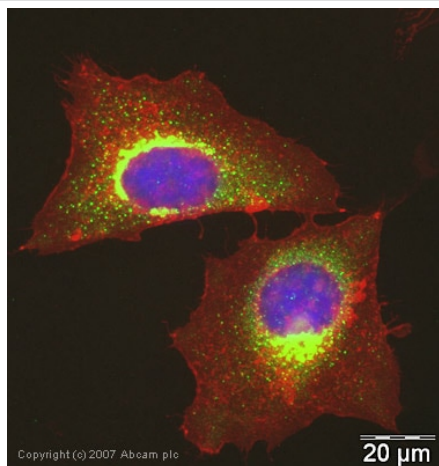
All lanes : Goat polyclonal to Rabbit IgG (Alexa Fluor® 680) at 1/10000 dilution

Performed under reducing conditions.

Predicted band size: 67 kDa

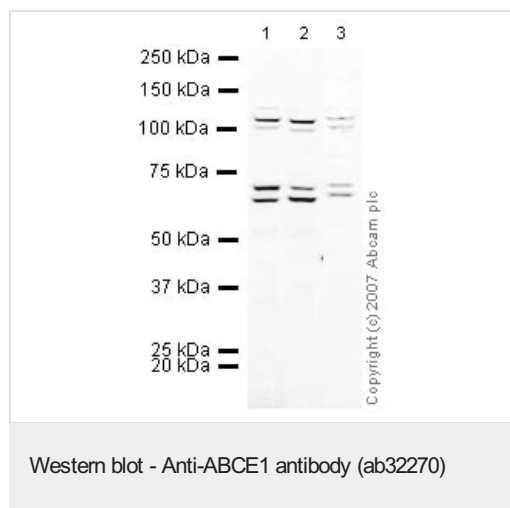
Observed band size: 70 kDa

Additional bands at: 100 kDa. We are unsure as to the identity of these extra bands.



Immunocytochemistry/ Immunofluorescence - Anti-ABCE1 antibody (ab32270)

ICC/IF image of ab32270 stained human HeLa cells. The cells were methanol fixed (5 min), permeabilised in TBS-T (20 min) and incubated with the antibody (ab32270, 1µg/ml) for 1h at room temperature. 1%BSA / 10% normal serum / 0.3M glycine was used to quench autofluorescence and block non-specific protein-protein interactions. The secondary antibody (green) was Alexa Fluor® 488 goat anti-rabbit IgG (H+L) used at a 1/1000 dilution for 1h. Alexa Fluor® 594 WGA was used to label plasma membranes (red). DAPI was used to stain the cell nuclei (blue).



All lanes : Anti-ABCE1 antibody (ab32270) at 1/250 dilution

Lane 1 : MEF1 (Mouse embryonic fibroblast cell line) Whole Cell Lysate

Lane 2 : Testis (Mouse) Tissue Lysate - normal tissue

Lane 3 : PC12 (Rat adrenal pheochromocytoma cell line) Whole Cell Lysate

Lysates/proteins at 10 µg per lane.

Secondary

All lanes : IRDye 680 Conjugated Goat Anti-Rabbit IgG (H+L) at 1/10000 dilution

Performed under reducing conditions.

Predicted band size: 67 kDa

Observed band size: 67,70 kDa

Additional bands at: 110 kDa. We are unsure as to the identity of these extra bands.

Please note: All products are "FOR RESEARCH USE ONLY. NOT FOR USE IN DIAGNOSTIC PROCEDURES"

Our Abpromise to you: Quality guaranteed and expert technical support

- Replacement or refund for products not performing as stated on the datasheet
- Valid for 12 months from date of delivery
- Response to your inquiry within 24 hours
- We provide support in Chinese, English, French, German, Japanese and Spanish
- Extensive multi-media technical resources to help you
- We investigate all quality concerns to ensure our products perform to the highest standards

If the product does not perform as described on this datasheet, we will offer a refund or replacement. For full details of the Abpromise, please visit <https://www.abcam.co.jp/abpromise> or contact our technical team.

Terms and conditions

- Guarantee only valid for products bought direct from Abcam or one of our authorized distributors