


# Anti-ABCB6/PRP antibody ab47837

画像数 1

### 製品の概要

製品名	Anti-ABCB6/PRP antibody
製品の詳細	Rabbit polyclonal to ABCB6/PRP
由来種	Rabbit
アプリケーション	適用あり: WB
種交差性	交差種: Human 交差が予測される動物種: Mouse, Rat 
免疫原	Synthetic peptide corresponding to Human ABCB6/PRP aa 440-455 (internal sequence). Sequence: RAMNTQENATRARAVD

 [Run BLAST with](#)

 [Run BLAST with](#)

ポジティブ・コントロール KB cells transfected with the ABCB6/PRP protein.

### 特記事項

The Life Science industry has been in the grips of a reproducibility crisis for a number of years. Abcam is leading the way in addressing this with our range of recombinant monoclonal antibodies and knockout edited cell lines for gold-standard validation. Please check that this product meets your needs before purchasing.

If you have any questions, special requirements or concerns, please send us an inquiry and/or contact our Support team ahead of purchase. Recommended alternatives for this product can be found below, along with publications, customer reviews and Q&As

### 製品の特性

製品の状態	Liquid
保存方法	Shipped at 4°C. Upon delivery aliquot and store at -20°C or -80°C. Avoid repeated freeze / thaw cycles.
バッファー	Preservative: 0.01% Sodium azide Constituents: 0.42% Potassium phosphate, 0.87% Sodium chloride
精製度	Immunogen affinity purified
ポリ/モノ	ポリクローナル
アイソタイプ	IgG

## アプリケーション

The Abpromise guarantee **Abpromise保証は、次のテスト済みアプリケーションにおけるab47837の使用に適用されず**  
アプリケーションノートには、推奨の開始希釈率がありますが、適切な希釈率につきましてはご検討ください。

アプリケーション	Abreviews	特記事項
WB		

### 追加情報

ELISA: 1/40000 - 1/200000.  
IF (microscopy): Use at an assay dependent dilution.  
WB: 1/1000 - 1/5000. Predicted molecular weight: 93 kDa.

Not yet tested in other applications.  
Optimal dilutions/concentrations should be determined by the end user.

## ターゲット情報

### 機能

Binds heme and porphyrins and functions in their ATP-dependent uptake into the mitochondria.  
Plays a crucial role in heme synthesis.

### 組織特異性

Widely expressed. Highest expression in heart and skeletal muscles.

### 配列類似性

Belongs to the ABC transporter superfamily. ABCB family. Heavy Metal importer (TC 3.A.1.210) subfamily.  
Contains 1 ABC transmembrane type-1 domain.  
Contains 1 ABC transporter domain.

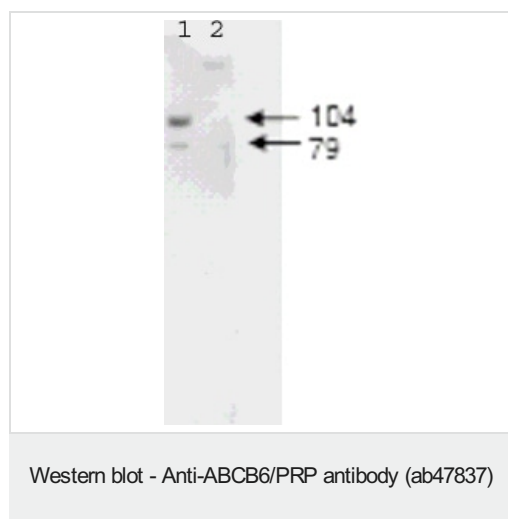
### 発生段階

Highly expressed in fetal liver.

### 細胞内局在

Mitochondrion outer membrane.

## 画像



**All lanes** : Anti-ABCB6/PRP antibody (ab47837) at 1/1400 dilution

**Lane 1** : KB cell lysate expressing Flag™-tagged human ABCB6/PRP protein

**Lane 2** : KB cell lysate without a vector insert

**Predicted band size:** 93 kDa

**Observed band size:** 104 kDa

**Additional bands at:** 79 kDa (possible truncated form)

**Please note:** All products are "FOR RESEARCH USE ONLY. NOT FOR USE IN DIAGNOSTIC PROCEDURES"

## **Our Abpromise to you: Quality guaranteed and expert technical support**

---

- Replacement or refund for products not performing as stated on the datasheet
- Valid for 12 months from date of delivery
- Response to your inquiry within 24 hours
  
- We provide support in Chinese, English, French, German, Japanese and Spanish
- Extensive multi-media technical resources to help you
- We investigate all quality concerns to ensure our products perform to the highest standards

If the product does not perform as described on this datasheet, we will offer a refund or replacement. For full details of the Abpromise, please visit <https://www.abcam.co.jp/abpromise> or contact our technical team.

## **Terms and conditions**

---

- Guarantee only valid for products bought direct from Abcam or one of our authorized distributors