

### Anti-ABCA1 antibody ab7360

★★★★☆ **6 Abreviews** **59 References** 画像数 4

#### 製品の概要

製品名	Anti-ABCA1 antibody
製品の詳細	Rabbit polyclonal to ABCA1
由来種	Rabbit
特異性	ab7360 has previously been shown to work well in ICC/IF on HeLa cells. However recent batches of this antibody, do not work in this application. We would recommend <b>ab18180</b> for researchers wanting to detect ABCA1 in ICC/IF. For further information, please contact our Scientific Support Team.
アプリケーション	<b>適用あり:</b> WB, IHC-P
種交差性	<b>交差種:</b> Mouse, Human
免疫原	Synthetic peptide corresponding to Human ABCA1. Synthetic peptide: The immunogen is generated from within residues 1100-1300 of Human ABCA1 Database link: <b><u>O95477</u></b>
特記事項	<p>The Life Science industry has been in the grips of a reproducibility crisis for a number of years. Abcam is leading the way in addressing this with our range of recombinant monoclonal antibodies and knockout edited cell lines for gold-standard validation. Please check that this product meets your needs before purchasing.</p> <p>If you have any questions, special requirements or concerns, please send us an inquiry and/or contact our Support team ahead of purchase. Recommended alternatives for this product can be found below, along with publications, customer reviews and Q&amp;As</p>

#### 製品の特性

製品の状態	Liquid
保存方法	Store at +4°C short term (1-2 weeks). Store at -20°C or -80°C. Avoid freeze / thaw cycle.
バッファー	pH: 7.40 Preservative: 0.02% Sodium azide Constituent: PBS
精製度	Immunogen affinity purified
ポリ/モノ	ポリクローナル
アイソタイプ	IgG

## アプリケーション

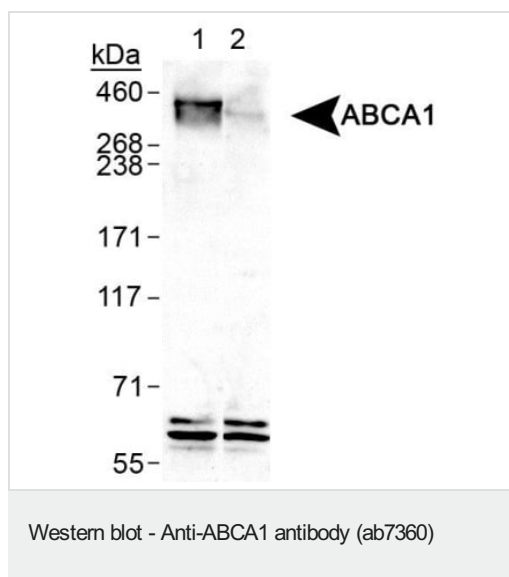
**The Abpromise guarantee**      **Abpromise保証は、次のテスト済みアプリケーションにおけるab7360の使用に適用されます**  
アプリケーションノートには、推奨の開始希釈率がありますが、適切な希釈率につきましてはご確認ください。

アプリケーション	Abreviews	特記事項
WB	★★★★☆ (5)	1/500 - 1/1000. Predicted molecular weight: 220 kDa. Additional non-specific bands are seen at lower molecular weights, but do not interfere with the ABC1 signal. It is important not to boil the sample before loading onto the gel. Boiling can cause aggregation in large proteins, resulting in the proteins inability to enter into the gel.
IHC-P		1/500.

## ターゲット情報

機能	cAMP-dependent and sulfonylurea-sensitive anion transporter. Key gatekeeper influencing intracellular cholesterol transport.
組織特異性	Widely expressed, but most abundant in macrophages.
関連疾患	<p>Defects in ABCA1 are a cause of high density lipoprotein deficiency type 1 (HDL1) [MIM:205400]; also known as analphalipoproteinemia or Tangier disease (TGD). HDL1 is a recessive disorder characterized by absence of high density lipoprotein (HDL) cholesterol from plasma, accumulation of cholesteryl esters, premature coronary artery disease (CAD), hepatosplenomegaly, recurrent peripheral neuropathy and progressive muscle wasting and weakness.</p> <p>Defects in ABCA1 are a cause of high density lipoprotein deficiency type 2 (HDL2) [MIM:604091]; also known as familial hypoalphalipoproteinemia (FHA). HDL2 is inherited as autosomal dominant trait. It is characterized by moderately low HDL cholesterol, predilection toward premature coronary artery disease (CAD) and a reduction in cellular cholesterol efflux.</p>
配列類似性	<p>Belongs to the ABC transporter superfamily. ABCA family.</p> <p>Contains 2 ABC transporter domains.</p>
ドメイン	Multifunctional polypeptide with two homologous halves, each containing an hydrophobic membrane-anchoring domain and an ATP binding cassette (ABC) domain.
翻訳後修飾	<p>Phosphorylation on Ser-2054 regulates phospholipid efflux.</p> <p>Palmitoylation by DHHC8 is essential for membrane localization.</p>
細胞内局在	Membrane.

## 画像



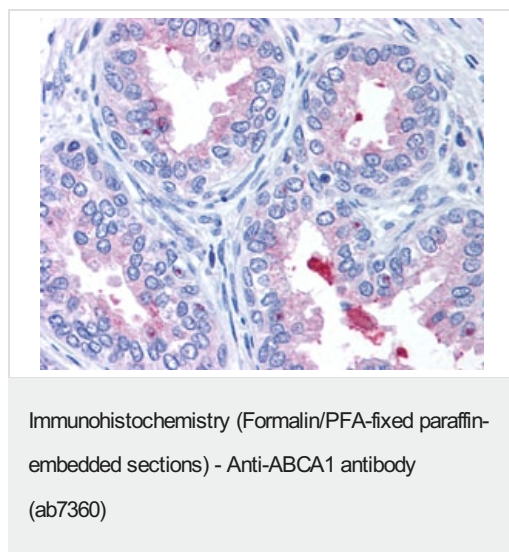
**All lanes :** Anti-ABCA1 antibody (ab7360)

**Lane 1 :** RAW 264.7 whole cell lysate treated with T0901317

**Lane 2 :** RAW 264.7 whole cell lysate untreated

Lysates/proteins at 25 µg per lane.

**Predicted band size:** 220 kDa



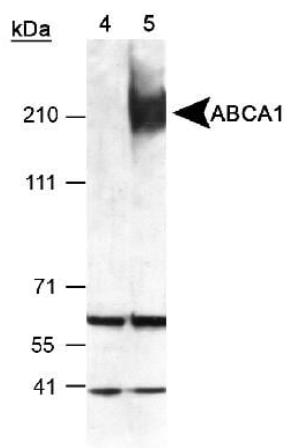
ab7360, staining ABCA1 in human prostate epithelium showing luminal and membrane staining by Immunohistochemistry (Formalin/PFA-fixed paraffin-embedded sections).



Western blot - Anti-ABCA1 antibody (ab7360)

The experiment was performed by treating RAW macrophages with 9-cis-retinoic acid and 22R-hydroxycholesterol, known inducers of ABCA1 expression in macrophages. Then total cell post-nuclear lysate (40ug protein) was separated by SDS-PAGE and detected using a 1:1000 dilution of ab7360 affinity purified Lot G incubated for 1 hour at room temperature (Lane A). Although there are lower molecular weight bands on the blot, the ABCA1 signal is excellent and gives the expected 3 bands. It is not known why ABCA1 runs as three bands, but it has been found to do so by many researchers. It is probably due to protein modifications such as glycosylation. The antibody was also tested against ABCA1 transiently expressed in 293 cells as an independent test with excellent results.

The experiment was performed by treating RAW macrophages with 9-cis-retinoic acid and 22R-hydroxycholesterol, known inducers of ABCA1 expression in macrophages. Then total cell post-nuclear lysate (40ug protein) was separ



Western blot - Anti-ABCA1 antibody (ab7360)

Detection of ABCA1 in mouse peritoneal macrophages using ab7360. ECL exposure, 1 min.

Lane 4: T09 uninduced lysate

Lane 5: T09 induced lysate Detection of ABCA1 in mouse peritoneal macrophages using ab7360. ECL exposure, 1 min.

Lane 4: T09 uninduced lysate

Lane 5: T09 induced lysate

**Please note:** All products are "FOR RESEARCH USE ONLY. NOT FOR USE IN DIAGNOSTIC PROCEDURES"

### Our Abpromise to you: Quality guaranteed and expert technical support

- Replacement or refund for products not performing as stated on the datasheet
- Valid for 12 months from date of delivery
- Response to your inquiry within 24 hours
- We provide support in Chinese, English, French, German, Japanese and Spanish
- Extensive multi-media technical resources to help you
- We investigate all quality concerns to ensure our products perform to the highest standards

If the product does not perform as described on this datasheet, we will offer a refund or replacement. For full details of the Abpromise, please visit <https://www.abcam.co.jp/abpromise> or contact our technical team.

## Terms and conditions

---

- Guarantee only valid for products bought direct from Abcam or one of our authorized distributors