



Anti-AATF/DED antibody [3C7] ab219073

画像数 3

製品の概要

製品名	Anti-AATF/DED antibody [3C7]
製品の詳細	Mouse monoclonal [3C7] to AATF/DED
由来種	Mouse
アプリケーション	適用あり: ICC/IF, WB, IHC-P
種交差性	交差種: Human
免疫原	Recombinant fragment (GST-tag) corresponding to Human AATF/DED aa 150-250. NCBI Accession No. AAH00591. Database link: Q9NY61
	 Run BLAST with  Run BLAST with
ポジティブ・コントロール	Human kidney tissue; HeLa cells; HeLa cell lysate.
特記事項	<p>The Life Science industry has been in the grips of a reproducibility crisis for a number of years. Abcam is leading the way in addressing this with our range of recombinant monoclonal antibodies and knockout edited cell lines for gold-standard validation. Please check that this product meets your needs before purchasing.</p> <p>If you have any questions, special requirements or concerns, please send us an inquiry and/or contact our Support team ahead of purchase. Recommended alternatives for this product can be found below, along with publications, customer reviews and Q&As</p>

製品の特性

製品の状態	Liquid
保存方法	Shipped at 4°C. Store at +4°C short term (1-2 weeks). Upon delivery aliquot. Store at -20°C long term. Avoid freeze / thaw cycle.
バッファー	pH: 7.40 Constituent: 100% PBS
精製度	Protein A purified
ポリ/モノ	モノクローナル
クローン名	3C7
アイソタイプ	IgG1
軽鎖の種類	kappa

アプリケーション

The Abpromise guarantee

Abpromise保証は、次のテスト済みアプリケーションにおけるab219073の使用に適用されます

アプリケーションノートには、推奨の開始希釈率がありますが、適切な希釈率につきましてはご検討ください。

アプリケーション	Abreviews	特記事項
ICC/IF		Use a concentration of 10 µg/ml.
WB		Use at an assay dependent concentration. Predicted molecular weight: 63 kDa.
IHC-P		Use a concentration of 10 µg/ml. Perform heat mediated antigen retrieval before commencing with IHC staining protocol.

ターゲット情報

機能

May function as a general inhibitor of the histone deacetylase HDAC1. Binding to the pocket region of RB1 may displace HDAC1 from RB1/E2F complexes, leading to activation of E2F target genes and cell cycle progression. Conversely, displacement of HDAC1 from SP1 bound to the CDKN1A promoter leads to increased expression of this CDK inhibitor and blocks cell cycle progression. Also antagonizes PAWR mediated induction of aberrant amyloid peptide production in Alzheimer disease (presenile and senile dementia), although the molecular basis for this phenomenon has not been described to date.

組織特異性

Ubiquitously expressed. Expressed at high levels in brain, heart, kidney, placenta and thymus.

配列類似性

Belongs to the AATF family.

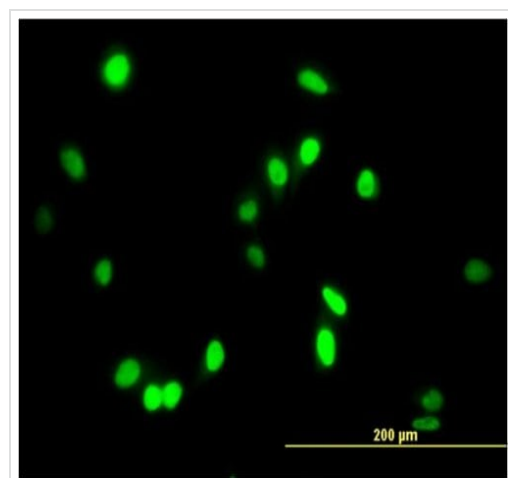
翻訳後修飾

Hyperphosphorylated during the G1/S phase transition.

細胞内局在

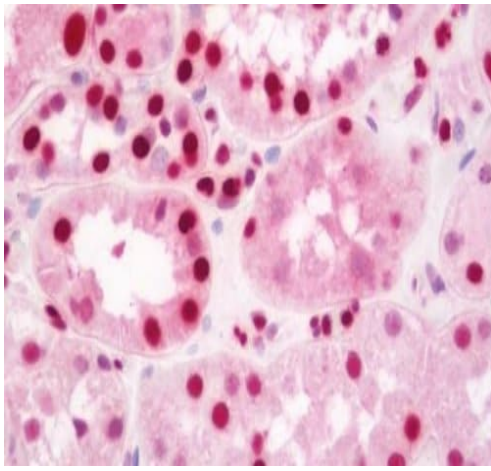
Nucleus > nucleolus.

画像



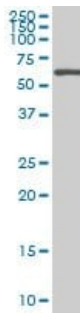
Immunofluorescent analysis of HeLa cells labeling AATF/DED using ab219073 at 10 µg/mL.

Immunocytochemistry/ Immunofluorescence - Anti-AATF/DED antibody [3C7] (ab219073)



Immunohistochemical analysis of formalin-fixed, paraffin-embedded Human kidney tissue labeling AATF/DED using ab219073 at 10 µg/ml.

Immunohistochemistry (Formalin/PFA-fixed paraffin-embedded sections) - Anti-AATF/DED antibody [3C7] (ab219073)



Anti-AATF/DED antibody [3C7] (ab219073) + HeLa cell lysate

Predicted band size: 63 kDa

Western blot - Anti-AATF/DED antibody [3C7] (ab219073)

Please note: All products are "FOR RESEARCH USE ONLY. NOT FOR USE IN DIAGNOSTIC PROCEDURES"

Our Abpromise to you: Quality guaranteed and expert technical support

- Replacement or refund for products not performing as stated on the datasheet
- Valid for 12 months from date of delivery
- Response to your inquiry within 24 hours
- We provide support in Chinese, English, French, German, Japanese and Spanish
- Extensive multi-media technical resources to help you
- We investigate all quality concerns to ensure our products perform to the highest standards

If the product does not perform as described on this datasheet, we will offer a refund or replacement. For full details of the Abpromise, please visit <https://www.abcam.co.jp/abpromise> or contact our technical team.

Terms and conditions

- Guarantee only valid for products bought direct from Abcam or one of our authorized distributors