




Anti-AANAT (phospho T29) antibody ab3439

2 References [画像数 1](#)

製品の概要

製品名	Anti-AANAT (phospho T29) antibody
製品の詳細	Rabbit polyclonal to AANAT (phospho T29)
由来種	Rabbit
アプリケーション	適用あり: WB
種交差性	交差種: Human 交差が予測される動物種: Mouse, Chicken, Hamster, Chimpanzee, Rhesus monkey 
免疫原	Synthetic peptide corresponding to Mouse AANAT aa 24-33 (N terminal) (phospho T29). Sequence: CQRRHT _p LPAS (Peptide available as ab4975) <div>  Run BLAST with  Run BLAST with </div>
ポジティブ・コントロール	Rat pineal gland whole protein extract.
特記事項	<p>The Life Science industry has been in the grips of a reproducibility crisis for a number of years. Abcam is leading the way in addressing this with our range of recombinant monoclonal antibodies and knockout edited cell lines for gold-standard validation. Please check that this product meets your needs before purchasing.</p> <p>If you have any questions, special requirements or concerns, please send us an inquiry and/or contact our Support team ahead of purchase. Recommended alternatives for this product can be found below, along with publications, customer reviews and Q&As</p>

製品の特性

製品の状態	Liquid
保存方法	Shipped at 4°C. Store at +4°C short term (1-2 weeks). Upon delivery aliquot. Store at -20°C or -80°C. Avoid freeze / thaw cycle.
バッファー	Preservative: 0.05% Sodium azide Constituents: 0.1% BSA, 99% PBS
精製度	Immunogen affinity purified
特記事項 (精製)	Total anti-N-terminal AA-NAT-specific IgG was affinity purified on resin-coupled non-phosphopeptide. Phospho-specific N-terminal IgG was subsequently isolated on resin-coupled phosphopeptide.
一次抗体 備考	Pineal gland Serotonin N-acetyltransferase (Arylalkylamine N-acetyltransferase, AA-NAT) is an

~23 kDa protein which is the rate-limiting enzyme in melatonin synthesis. Melatonin serves as the hormonal signal of the daily light / dark cycle, or body clock. The nocturnal oscillation in enzyme activity ranges by 10- to 100-fold depending on species among vertebrates. Studies have shown that AA-NAT is regulated by cAMP at both the mRNA and protein levels. AA-NAT has putative protein kinase A (PKA) sites at Thr 29 and Ser 206. Phosphorylation of AA-NAT at these residues might play a role in protein inactivation via proteasome-dependent degradation.

ポリ/モノ

ポリクローナル

アイソタイプ

IgG

アプリケーション

The Abpromise guarantee

Abpromise保証は、次のテスト済みアプリケーションにおけるab3439の使用に適用されます

アプリケーションノートには、推奨の開始希釈率がありますが、適切な希釈率につきましてはご検討ください。

アプリケーション	Abreviews	特記事項
WB		Use a concentration of 0.5 µg/ml. Detects a band of approximately 23 kDa (predicted molecular weight: 23 kDa). By Western blot, this antibody detects an ~23 kDa protein representing phospho AA-NAT in rat pineal gland whole protein extract.

ターゲット情報

機能

Controls the night/day rhythm of melatonin production in the pineal gland. Catalyzes the N-acetylation of serotonin into N-acetylserotonin, the penultimate step in the synthesis of melatonin.

組織特異性

Highly expressed in pineal gland and at lower levels in the retina. Weak expression in several brain regions and in the pituitary gland.

パスウェイ

Aromatic compound metabolism; melatonin biosynthesis; melatonin from serotonin: step 1/2.

関連疾患

Delayed sleep phase syndrome

配列類似性

Belongs to the acetyltransferase family. AANAT subfamily.
Contains 1 N-acetyltransferase domain.

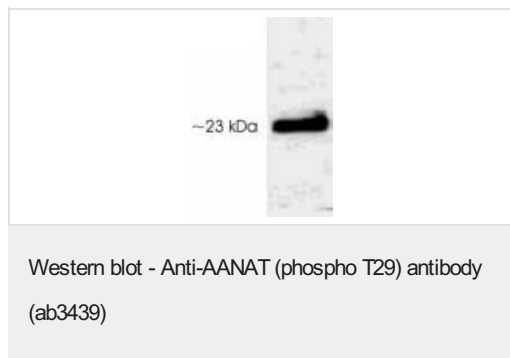
翻訳後修飾

cAMP-dependent phosphorylation on both N-terminal Thr-31 and C-terminal Ser-205 regulates AANAT activity by promoting interaction with 14-3-3 proteins.

細胞内局在

Cytoplasm.

画像



Western blot detection of Serotonin N-acetyltransferase (phospho T29) in transfected 293T cell lysate using ab3439.

Please note: All products are "FOR RESEARCH USE ONLY. NOT FOR USE IN DIAGNOSTIC PROCEDURES"

Our Abpromise to you: Quality guaranteed and expert technical support

- Replacement or refund for products not performing as stated on the datasheet
- Valid for 12 months from date of delivery
- Response to your inquiry within 24 hours
- We provide support in Chinese, English, French, German, Japanese and Spanish
- Extensive multi-media technical resources to help you
- We investigate all quality concerns to ensure our products perform to the highest standards

If the product does not perform as described on this datasheet, we will offer a refund or replacement. For full details of the Abpromise, please visit <https://www.abcam.co.jp/abpromise> or contact our technical team.

Terms and conditions

- Guarantee only valid for products bought direct from Abcam or one of our authorized distributors