

### Anti-6X His tag® antibody [4D11] ab5000

★★★★★ **4 Abreviews** **30 References** 画像数 4

#### 製品の概要

製品名	Anti-6X His tag® antibody [4D11]
製品の詳細	Mouse monoclonal [4D11] to 6X His tag®
由来種	Mouse
アプリケーション	<b>適用あり:</b> Dot blot, ELISA, WB, IP, ICC/IF, Flow Cyt
種交差性	<b>交差種:</b> Species independent
免疫原	Synthetic peptide. This information is proprietary to Abcam and/or its suppliers.
エピトープ	This antibody was shown to recognize an epitope (HHHHHHGS) encoded by the polylinker of several expression vectors (including pDS:RBSII, pQE-30, and pQE-50).
特記事項	<p>This antibody clone is manufactured by Abcam. If you require a custom buffer formulation or conjugation for your experiments, please contact <a href="mailto:orders@abcam.com">orders@abcam.com</a>.</p> <p>HIS-TAG® is a trademark of EMD Biosciences, Inc.</p> <p>The Life Science industry has been in the grips of a reproducibility crisis for a number of years. Abcam is leading the way in addressing this with our range of recombinant monoclonal antibodies and knockout edited cell lines for gold-standard validation. Please check that this product meets your needs before purchasing.</p> <p>If you have any questions, special requirements or concerns, please send us an inquiry and/or contact our Support team ahead of purchase. Recommended alternatives for this product can be found below, along with publications, customer reviews and Q&amp;As</p>

#### 製品の特性

製品の状態	Liquid
保存方法	Shipped at 4°C. Store at +4°C short term (1-2 weeks). Add glycerol to a final volume of 50% for extra stability and aliquot. Store at -20°C or -80°C. Avoid freeze / thaw cycle.
バッファー	<p>pH: 7.40</p> <p>Preservative: 0.02% Sodium azide</p> <p>Constituents: 6.97% L-Arginine, PBS</p>
精製度	Protein G purified
ポリ/モノ	モノクローナル
クローン名	4D11

ミエローマ	NS1
アイソタイプ	IgG2a
軽鎖の種類	kappa

## アプリケーション

**The Abpromise guarantee**      **Abpromise保証は、** 次のテスト済みアプリケーションにおけるab5000の使用に適用されます  
アプリケーションノートには、推奨の開始希釈率がありますが、適切な希釈率につきましてはご検討ください。

アプリケーション	Abreviews	特記事項
AP		Use at an assay dependent concentration.
Dot blot		Use at an assay dependent concentration.
ELISA		Use at an assay dependent concentration.
WB	★★★★★ (2)	1/1000.
IP	★★★★★ (1)	Use at an assay dependent concentration. See Abreview.
ICC/IF	★★★★★ (1)	Use at an assay dependent concentration.
Flow Cyt		Use at an assay dependent concentration. <b>ab170191</b> - Mouse monoclonal IgG2a, is suitable for use as an isotype control with this antibody.

## ターゲット情報

関連性	The H-H-H-H-H-H motif is used as a tag on many recombinant proteins to facilitate purification. His-tags can be fused to the amino- or carboxy- termini of proteins in transfected or transformed cells.
細胞内局在	Depends upon the localization of the parent protein tagged with hexahistidine.

## 画像



Western blot - Anti-6X His tag® antibody [4D11] (ab5000)

Anti-6X His tag® antibody [4D11] (ab5000) at 1/1000 dilution + 6X His Tagged Protein at 1 µg

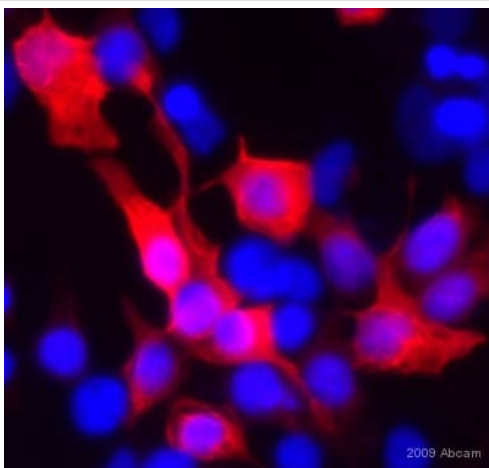
### Secondary

Goat polyclonal to Mouse IgG - H&L - Pre-Adsorbed (HRP) ([ab65485](#)) at 1/3000 dilution

Developed using the ECL technique.

Performed under reducing conditions.

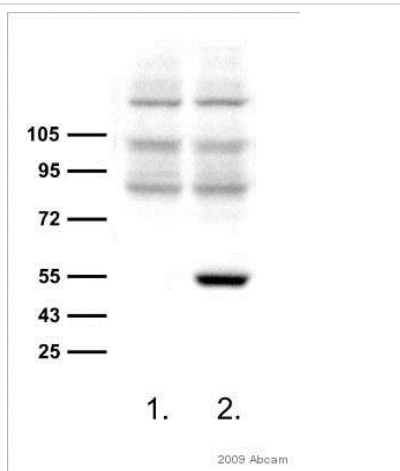
**Exposure time:** 30 seconds



Immunocytochemistry/ Immunofluorescence - Anti-6X His tag® antibody [4D11] (ab5000)

This image is courtesy of an Abreview submitted by Dr Vladimir Milenkovic

ab5000 staining Human HEK 293 cells transfected with CACNB3-His by ICC/IF. Cells were PFA fixed and permeabilized in 0.5% Triton X-100 prior to blocking in 5% serum for 20 minutes at 25°C. The primary antibody (1/250 in 1% goat serum, 0.1% TX100, 1X PBS) was incubated with the sample for 16 hours at 4°C. An Alexa Fluor® 546 conjugated goat anti-mouse antibody (1/500) was used as the secondary. DAPI was used for nuclei staining (blue).



Western blot - Anti-6X His tag® antibody [4D11] (ab5000)

This image is courtesy of an Abreview submitted by Dr Vladimir Milenkovic

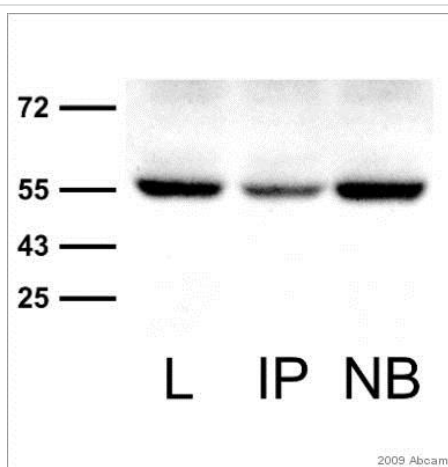
**All lanes** : Anti-6X His tag® antibody [4D11] (ab5000) at 1/2000 dilution

**Lane 1** : Lysates prepared from HEK-293 cells

**Lane 2** : Lysates prepared from HEK-293 cells transfected with Beta3-His (CACNB3)

#### Secondary

**All lanes** : HRP-conjugated goat anti-mouse IgG polyclonal at 1/5000 dilution



Immunoprecipitation - Anti-6X His tag® antibody [4D11] (ab5000)

This image is courtesy of an Abreview submitted by Dr Vladimir Milenkovic

ab5000 Immunoprecipitate in human HEK293 whole cell lysate. 25µg of cell lysate incubated with primary antibody (undiluted) and matrix (Protein G) for 16 hours at 4°C. For western blotting an undiluted HRP-Goat anti-rabbit IgG polyclonal was used. Beta3-His fusion protein was immunoprecipitated using anti His Ab, and specific beta3a band (56kDa) was detected using anti beta3 Ab

Lane 1. Lysate of HEK293 cells expressing beta3-His (CACNB3)

Lane 2. IP with anti His Ab

Lane 3. Non bound fraction

**Please note:** All products are "FOR RESEARCH USE ONLY. NOT FOR USE IN DIAGNOSTIC PROCEDURES"

#### Our Abpromise to you: Quality guaranteed and expert technical support

- Replacement or refund for products not performing as stated on the datasheet
- Valid for 12 months from date of delivery
- Response to your inquiry within 24 hours

- We provide support in Chinese, English, French, German, Japanese and Spanish
- Extensive multi-media technical resources to help you
- We investigate all quality concerns to ensure our products perform to the highest standards

If the product does not perform as described on this datasheet, we will offer a refund or replacement. For full details of the Abpromise, please visit <https://www.abcam.co.jp/abpromise> or contact our technical team.

#### **Terms and conditions**

---

- Guarantee only valid for products bought direct from Abcam or one of our authorized distributors