


### Anti-68kDa Neurofilament/NF-L antibody ab9035

★★★★★ [2 Abreviews](#) [4 References](#) [画像数 4](#)

#### 製品の概要

製品名	Anti-68kDa Neurofilament/NF-L antibody
製品の詳細	Rabbit polyclonal to 68kDa Neurofilament/NF-L
由来種	Rabbit
特異性	Specifically recognizes the light neurofilament subunit (~68 kDa).
アプリケーション	<b>適用あり:</b> WB, ICC/IF, IHC-FrFI
種交差性	<b>交差種:</b> Mouse, Rat <b>交差が予測される動物種:</b> Bird, Mammals 
免疫原	Full length native protein (purified) corresponding to Pig 68kDa Neurofilament/NF-L. prepared from spinal cords by the method of Delacourte et al. and this cytoskeletal material was dissolved in 6M urea. Purified by ion exchange chromatography, then preparative gel electrophoresis.
特記事項	<p>The Life Science industry has been in the grips of a reproducibility crisis for a number of years. Abcam is leading the way in addressing this with our range of recombinant monoclonal antibodies and knockout edited cell lines for gold-standard validation. Please check that this product meets your needs before purchasing.</p> <p>If you have any questions, special requirements or concerns, please send us an inquiry and/or contact our Support team ahead of purchase. Recommended alternatives for this product can be found below, along with publications, customer reviews and Q&amp;As</p>

#### 製品の特性

製品の状態	Liquid
保存方法	Shipped at 4°C. Store at +4°C short term (1-2 weeks). Upon delivery aliquot. Store at -20°C or -80°C. Avoid freeze / thaw cycle.
精製度	Whole antiserum
ポリ/モノ	ポリクローナル
アイソタイプ	IgG

#### アプリケーション

The Abpromise guarantee

**Abpromise保証は、** 次のテスト済みアプリケーションにおけるab9035の使用に適用されます

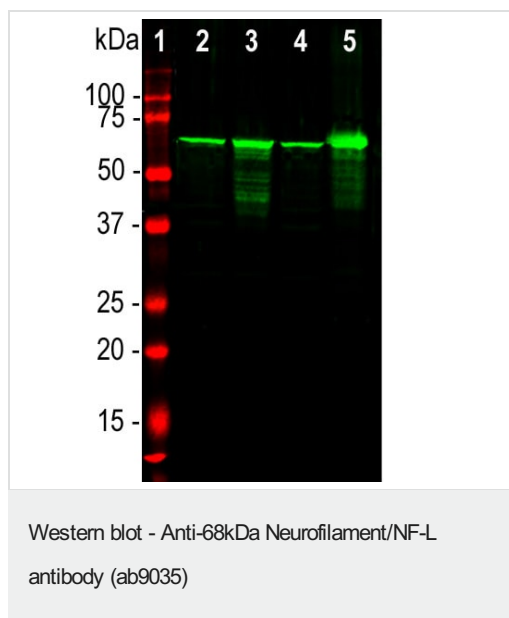
アプリケーションノートには、推奨の開始希釈率がありますが、適切な希釈率につきましてはご確認ください。

アプリケーション	Abreviews	特記事項
WB		1/5000.
ICC/IF	★★★★★ (1)	1/500.
IHC-FrFI		1/5000.

## ターゲット情報

機能	Neurofilaments usually contain three intermediate filament proteins: L, M, and H which are involved in the maintenance of neuronal caliber.
関連疾患	<p>Defects in NEFL are the cause of Charcot-Marie-Tooth disease type 1F (CMT1F) [MIM:607734]. CMT1F is a form of Charcot-Marie-Tooth disease, the most common inherited disorder of the peripheral nervous system. Charcot-Marie-Tooth disease is classified in two main groups on the basis of electrophysiologic properties and histopathology: primary peripheral demyelinating neuropathy or CMT1, and primary peripheral axonal neuropathy or CMT2. Neuropathies of the CMT1 group are characterized by severely reduced nerve conduction velocities (less than 38 m/sec), segmental demyelination and remyelination with onion bulb formations on nerve biopsy, slowly progressive distal muscle atrophy and weakness, absent deep tendon reflexes, and hollow feet. CMT1F is characterized by onset in infancy or childhood (range 1 to 13 years).</p> <p>Defects in NEFL are the cause of Charcot-Marie-Tooth disease type 2E (CMT2E) [MIM:607684]. CMT2E is an autosomal dominant form of Charcot-Marie-Tooth disease type 2. Neuropathies of the CMT2 group are characterized by signs of axonal regeneration in the absence of obvious myelin alterations, normal or slightly reduced nerve conduction velocities, and progressive distal muscle weakness and atrophy.</p>
配列類似性	Belongs to the intermediate filament family.
ドメイン	The extra mass and high charge density that distinguish the neurofilament proteins from all other intermediate filament proteins are due to the tailpiece extensions. This region may form a charged scaffolding structure suitable for interaction with other neuronal components or ions.
翻訳後修飾	<p>O-glycosylated.</p> <p>Phosphorylated in the Head and Rod regions by the PKC kinase PKN1, leading to inhibit polymerization.</p>

## 画像



**Lane 1 :** Protein ladder

**Lanes 2-5 :** Anti-68kDa Neurofilament/NF-L antibody (ab9035) at 1/20000 dilution

**Lane 2 :** Rat brain

**Lane 3 :** Rat spinal cord

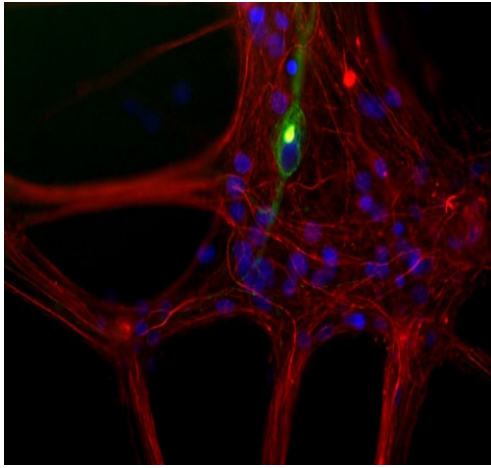
**Lane 4 :** Mouse brain

**Lane 5 :** Mouse spinal cord

**Observed band size:** 68 kDa

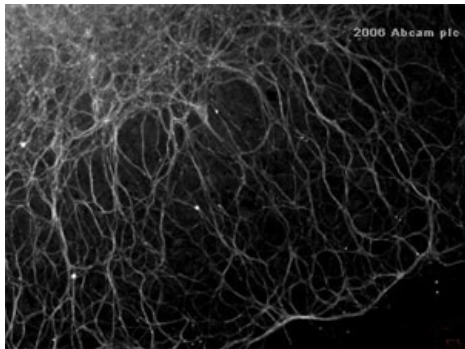


Immunohistochemistry (Free Floating) analysis of mouse cerebellum staining 68kDa Neurofilament/NF-L with ab9035 (1/5000) in red. Costained with chicken pAb to MBP (1/5000) in green and DAPI in blue. Following transcardial perfusion of mouse with 4% paraformaldehyde, brain was post fixed for 24 hours, cut to 45 $\mu$ M, and free-floating sections were stained with above antibodies.



Immunocytochemistry/ Immunofluorescence - Anti-68kDa Neurofilament/NF-L antibody (ab9035)

ab9035 staining anti 68kDa Neurofilament/NF-L in mixed neuron/glia cultures from newborn rat brain by ICC/IF (Immunocytochemistry/immunofluorescence). Samples were incubated with primary antibody (1/500) (red) and co-stained with **ab4573** for anti Peripherin (green).



Immunocytochemistry/ Immunofluorescence - Anti-68kDa Neurofilament/NF-L antibody (ab9035)

This image is courtesy of an Abreview submitted by Dr Luis Craveiro

ab9035 at a 1/300 dilution staining rat hippocampal organotypic slice cultures by ICC/IF. The primary antibody was incubated with the cells for 120 hours (this time allows for the antibody to penetrate a layer of glial cells that grows while the slice is in culture). Bound antibody is detected using a Cy3 conjugated Indocarbocyanine.

**Please note:** All products are "FOR RESEARCH USE ONLY. NOT FOR USE IN DIAGNOSTIC PROCEDURES"

### Our Abpromise to you: Quality guaranteed and expert technical support

- Replacement or refund for products not performing as stated on the datasheet
- Valid for 12 months from date of delivery
- Response to your inquiry within 24 hours
- We provide support in Chinese, English, French, German, Japanese and Spanish
- Extensive multi-media technical resources to help you

- We investigate all quality concerns to ensure our products perform to the highest standards

If the product does not perform as described on this datasheet, we will offer a refund or replacement. For full details of the Abpromise, please visit <https://www.abcam.co.jp/abpromise> or contact our technical team.

### **Terms and conditions**

---

- Guarantee only valid for products bought direct from Abcam or one of our authorized distributors