


Anti-67kDa Laminin Receptor antibody ab137388

[5 References](#) [画像数 4](#)

製品の概要

製品名	Anti-67kDa Laminin Receptor antibody
製品の詳細	Rabbit polyclonal to 67kDa Laminin Receptor
由来種	Rabbit
アプリケーション	適用あり: ICC/IF, IHC-P, WB
種交差性	交差種: Mouse, Human 交差が予測される動物種: Rat, Cow, Pig, Monkey 
免疫原	Recombinant fragment, corresponding to a region within amino acids 1-294 of Human 67kDa Laminin Receptor (Uniprot ID: P08865).
ポジティブ・コントロール	293T, A431, H1299, HeLa, HepG2, MOLT4, Raji and Mouse brain whole cell lysates; HeLa cells; Human CA922 xenograft tissue.
特記事項	<p>The Life Science industry has been in the grips of a reproducibility crisis for a number of years. Abcam is leading the way in addressing this with our range of recombinant monoclonal antibodies and knockout edited cell lines for gold-standard validation. Please check that this product meets your needs before purchasing.</p> <p>If you have any questions, special requirements or concerns, please send us an inquiry and/or contact our Support team ahead of purchase. Recommended alternatives for this product can be found below, along with publications, customer reviews and Q&As</p>

製品の特性

製品の状態	Liquid
保存方法	Shipped at 4°C. Upon delivery aliquot. Store at -20°C or -80°C. Avoid freeze / thaw cycle.
バッファー	pH: 7.00 Preservative: 0.025% Proclin 300 Constituents: 78% PBS, 1% BSA, 20% Glycerol (glycerin, glycerine)
精製度	Immunogen affinity purified
ポリ/モノ	ポリクローナル
アイソタイプ	IgG

アプリケーション

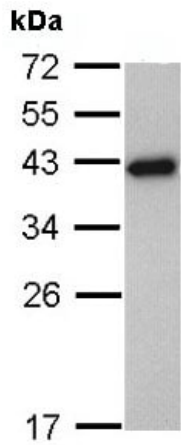
The Abpromise guarantee **Abpromise保証は、次のテスト済みアプリケーションにおけるab137388の使用に適用されます**
アプリケーションノートには、推奨の開始希釈率がありますが、適切な希釈率につきましてはご検討ください。

アプリケーション	Abreviews	特記事項
ICC/IF		1/100 - 1/1000.
IHC-P		1/100 - 1/1000. Perform heat mediated antigen retrieval with citrate buffer pH 6 before commencing with IHC staining protocol. or Tris-EDTA buffer (pH8.0)
WB		1/500 - 1/3000. Predicted molecular weight: 33 kDa.

ターゲット情報

機能	Required for the assembly and/or stability of the 40S ribosomal subunit. Required for the processing of the 20S rRNA-precursor to mature 18S rRNA in a late step of the maturation of 40S ribosomal subunits. Also functions as a cell surface receptor for laminin. Plays a role in cell adhesion to the basement membrane and in the consequent activation of signaling transduction pathways. May play a role in cell fate determination and tissue morphogenesis. Acts as a PPP1R16B-dependent substrate of PPP1CA. Also acts as a receptor for several other ligands, including the pathogenic prion protein, viruses, and bacteria.
配列類似性	Belongs to the ribosomal protein S2P family.
翻訳後修飾	Acylation. Acylation may be a prerequisite for conversion of the monomeric 37 kDa laminin receptor precursor (37LRP) to the mature dimeric 67 kDa laminin receptor (67LR), and may provide a mechanism for membrane association. Cleaved by stromelysin-3 (ST3) at the cell surface. Cleavage by stromelysin-3 may be a mechanism to alter cell-extracellular matrix interactions.
細胞内局在	Cell membrane. Cytoplasm. Nucleus. 67LR is found at the surface of the plasma membrane, with its C-terminal laminin-binding domain accessible to extracellular ligands. 37LRP is found at the cell surface, in the cytoplasm and in the nucleus (By similarity). Co-localizes with PPP1R16B in the cell membrane.

画像

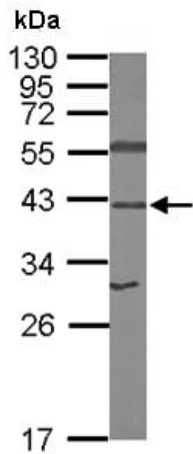


Western blot - Anti-67kDa Laminin Receptor antibody (ab137388)

Anti-67kDa Laminin Receptor antibody (ab137388) at 1/1000 dilution + HepG2 whole cell lysate at 30 μ g

Predicted band size: 33 kDa

12% SDS PAGE

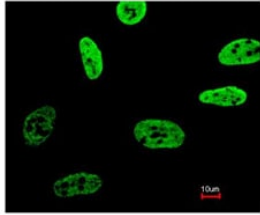


Western blot - Anti-67kDa Laminin Receptor antibody (ab137388)

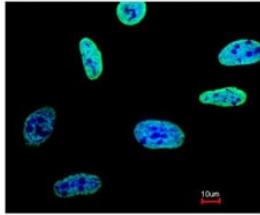
Anti-67kDa Laminin Receptor antibody (ab137388) at 1/1000 dilution + Mouse brain whole cell lysate at 50 μ g

Predicted band size: 33 kDa

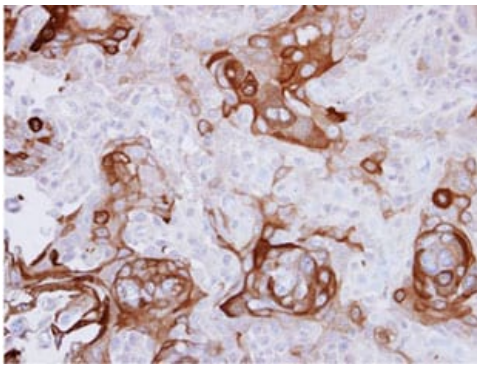
12% SDS PAGE



Immunofluorescence analysis of paraformaldehyde-fixed HeLa cells, labelling 67kDa Laminin Receptor with ab137388 at 1/200 dilution. Lower image is merged with DNA probe.



Immunocytochemistry/ Immunofluorescence - Anti-67kDa Laminin Receptor antibody (ab137388)



Immunohistochemical analysis of paraffin-embedded Human CA922 xenograft tissue, labelling 67kDa Laminin Receptor with ab137388 at 1/500 dilution.

Immunohistochemistry (Formalin/PFA-fixed paraffin-embedded sections) - Anti-67kDa Laminin Receptor antibody (ab137388)

Please note: All products are "FOR RESEARCH USE ONLY. NOT FOR USE IN DIAGNOSTIC PROCEDURES"

Our Abpromise to you: Quality guaranteed and expert technical support

- Replacement or refund for products not performing as stated on the datasheet
- Valid for 12 months from date of delivery
- Response to your inquiry within 24 hours
- We provide support in Chinese, English, French, German, Japanese and Spanish
- Extensive multi-media technical resources to help you
- We investigate all quality concerns to ensure our products perform to the highest standards

If the product does not perform as described on this datasheet, we will offer a refund or replacement. For full details of the Abpromise, please visit <https://www.abcam.co.jp/abpromise> or contact our technical team.

Terms and conditions

- Guarantee only valid for products bought direct from Abcam or one of our authorized distributors