


Anti-5HT1B Receptor antibody ab85937

★★★★★ [3 Abreviews](#) [1 References](#) [画像数 1](#)

製品の概要

製品名	Anti-5HT1B Receptor antibody
製品の詳細	Rabbit polyclonal to 5HT1B Receptor
由来種	Rabbit
特異性	This antibody has been successfully used on rat tissue in IHC. Since the immunogen only shares 84% homology, customers may get variable results. Please see the abreview for more details.
アプリケーション	適用あり: WB
種交差性	交差種: Human 交差が予測される動物種: Chimpanzee, Gorilla, Common marmoset 
免疫原	Synthetic peptide corresponding to Human 5HT1B Receptor aa 1-100 conjugated to keyhole limpet haemocyanin. (Peptide available as ab94829)
特記事項	<p>The Life Science industry has been in the grips of a reproducibility crisis for a number of years. Abcam is leading the way in addressing this with our range of recombinant monoclonal antibodies and knockout edited cell lines for gold-standard validation. Please check that this product meets your needs before purchasing.</p> <p>If you have any questions, special requirements or concerns, please send us an inquiry and/or contact our Support team ahead of purchase. Recommended alternatives for this product can be found below, along with publications, customer reviews and Q&As</p>

製品の特性

製品の状態	Liquid
保存方法	Shipped at 4°C. Store at +4°C short term (1-2 weeks). Upon delivery aliquot. Store at -20°C or -80°C. Avoid freeze / thaw cycle.
バッファー	pH: 7.40 Preservative: 0.02% Sodium azide Constituent: PBS

Batches of this product that have a concentration < 1mg/ml may have BSA added as a stabilising agent. If you would like information about the formulation of a specific lot, please contact our scientific support team who will be happy to help.

精製度	Immunogen affinity purified
ポリ/モノ	ポリクローナル
アイソタイプ	IgG

アプリケーション

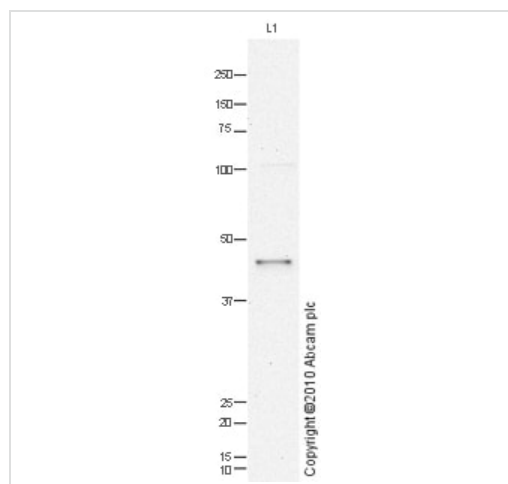
The Abpromise guarantee **Abpromise保証は、次のテスト済みアプリケーションにおけるab85937の使用に適用されます**
 アプリケーションノートには、推奨の開始希釈率がありますが、適切な希釈率につきましてはご検討ください。

アプリケーション	Abreviews	特記事項
WB		Use a concentration of 1 µg/ml. Detects a band of approximately 43 kDa (predicted molecular weight: 43 kDa).

ターゲット情報

機能	This is one of the several different receptors for 5-hydroxytryptamine (serotonin), a biogenic hormone that functions as a neurotransmitter, a hormone, and a mitogen. The activity of this receptor is mediated by G proteins that inhibit adenylate cyclase activity.
配列類似性	Belongs to the G-protein coupled receptor 1 family.
翻訳後修飾	Phosphorylated. Desensitization of the receptor may be mediated by its phosphorylation. Palmitoylated.
細胞内局在	Cell membrane.

画像



Western blot - Anti-5HT1B Receptor antibody (ab85937)

5HT1B Receptor antibody at 1 µg/ml + Human brain tissue lysate - total protein ([ab29466](#)) at 10 µg

Secondary

Goat polyclonal to Rabbit IgG - H&L - Pre-Adsorbed (HRP) at 1/3000 dilution

Developed using the ECL technique.

Performed under reducing conditions.

Predicted band size: 43 kDa

Observed band size: 43 kDa

Exposure time: 20 minutes

Please note: All products are "FOR RESEARCH USE ONLY. NOT FOR USE IN DIAGNOSTIC PROCEDURES"

Our Abpromise to you: Quality guaranteed and expert technical support

- Replacement or refund for products not performing as stated on the datasheet
- Valid for 12 months from date of delivery
- Response to your inquiry within 24 hours

- We provide support in Chinese, English, French, German, Japanese and Spanish
- Extensive multi-media technical resources to help you
- We investigate all quality concerns to ensure our products perform to the highest standards

If the product does not perform as described on this datasheet, we will offer a refund or replacement. For full details of the Abpromise, please visit <https://www.abcam.co.jp/abpromise> or contact our technical team.

Terms and conditions

- Guarantee only valid for products bought direct from Abcam or one of our authorized distributors