




Anti-58K Golgi protein antibody - Golgi Marker ab19072

7 References [画像数 2](#)

製品の概要

製品名	Anti-58K Golgi protein antibody - Golgi Marker
製品の詳細	Goat polyclonal to 58K Golgi protein - Golgi Marker
由来種	Goat
アプリケーション	適用あり: WB, Flow Cyt
種交差性	交差種: Human 交差が予測される動物種: Pig 
免疫原	Synthetic peptide: SQLVECVPNFSEGKNQ , corresponding to N terminal amino acids 2-17 of Human 58K Golgi protein. <div>  Run BLAST with  Run BLAST with </div>
ポジティブ・コントロール	Flow Cyt: HepG2 cells
特記事項	<p>The Life Science industry has been in the grips of a reproducibility crisis for a number of years. Abcam is leading the way in addressing this with our range of recombinant monoclonal antibodies and knockout edited cell lines for gold-standard validation. Please check that this product meets your needs before purchasing.</p> <p>If you have any questions, special requirements or concerns, please send us an inquiry and/or contact our Support team ahead of purchase. Recommended alternatives for this product can be found below, along with publications, customer reviews and Q&As</p>

製品の特性

製品の状態	Liquid
保存方法	Shipped at 4°C. Upon delivery aliquot and store at -20°C. Avoid freeze / thaw cycles.
バッファー	pH: 7.30 Preservative: 0.02% Sodium azide Constituents: Tris buffered saline, 0.5% BSA
精製度	Immunogen affinity purified
特記事項 (精製)	Purified from goat serum by ammonium sulphate precipitation followed by antigen affinity chromatography using the immunizing peptide.
ポリ/モノ	ポリクローナル

アプリケーション

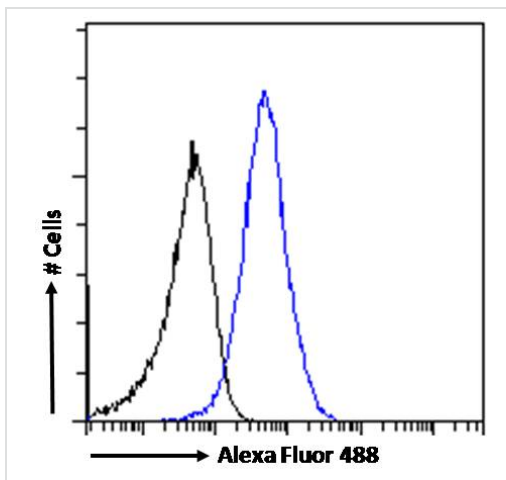
The Abpromise guarantee Abpromise保証は、 次のテスト済みアプリケーションにおけるab19072の使用に適用されます
アプリケーションノートには、推奨の開始希釈率がありますが、適切な希釈率につきましてはご検討ください。

アプリケーション	Abreviews	特記事項
WB		Use a concentration of 0.03 - 0.2 µg/ml. Detects a band of approximately 60 kDa (predicted molecular weight: 59 kDa). A 1 hour primary incubation is recommended for this product.
Flow Cyt		Use a concentration of 10 µg/ml.

ターゲット情報

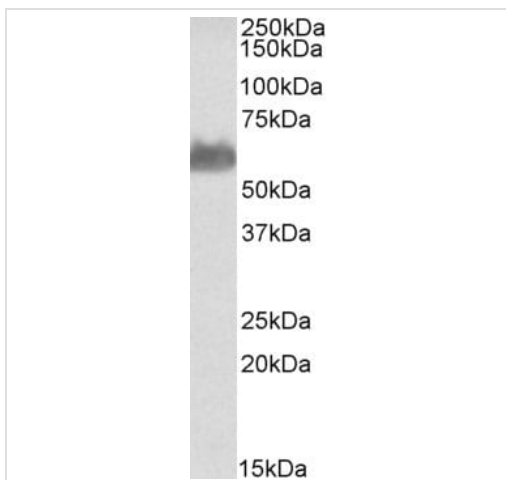
機能	Folate-dependent enzyme, that displays both transferase and deaminase activity. Serves to channel one-carbon units from formiminoglutamate to the folate pool. Binds and promotes bundling of vimentin filaments originating from the Golgi.
パスウェイ	Amino-acid degradation; L-histidine degradation into L-glutamate; L-glutamate from N-formimidoyl-L-glutamate (transferase route): step 1/1. One-carbon metabolism; tetrahydrofolate interconversion.
関連疾患	Defects in FTCD are the cause of glutamate formiminotransferase deficiency (FIGLU-URIA) [MIM:229100]; also known as formiminoglutamicaciduria (FIGLU-uria). It is an autosomal recessive disorder. Features of a severe phenotype, include elevated levels of formiminoglutamate (FIGLU) in the urine in response to histidine administration, megaloblastic anemia, and mental retardation. Features of a mild phenotype include high urinary excretion of FIGLU in the absence of histidine administration, mild developmental delay, and no hematological abnormalities.
配列類似性	In the C-terminal section; belongs to the cyclodeaminase/cyclohydrolase family. In the N-terminal section; belongs to the formiminotransferase family.
細胞内局在	Cytoplasm > cytoskeleton > centrosome > centriole. Golgi apparatus. More abundantly located around the mother centriole.

画像



Flow Cytometry - Anti-58K Golgi protein antibody -
Golgi Marker (ab19072)

Flow cytometric analysis of paraformaldehyde fixed HepG2 cells (blue line), permeabilized with 0.5% Triton. Primary incubation 1hr (10µg/mL) followed by Alexa Fluor 488 secondary antibody (1µg/mL). IgG control: Unimmunized goat IgG (black line) followed by Alexa Fluor 488 secondary antibody.



Western blot - Anti-58K Golgi protein antibody -
Golgi Marker (ab19072)

Anti-58K Golgi protein antibody - Golgi Marker (ab19072) at 0.05 µg/ml + Human liver lysate at 35 µg

Predicted band size: 59 kDa

Please note: All products are "FOR RESEARCH USE ONLY. NOT FOR USE IN DIAGNOSTIC PROCEDURES"

Our Abpromise to you: Quality guaranteed and expert technical support

- Replacement or refund for products not performing as stated on the datasheet
- Valid for 12 months from date of delivery

- Response to your inquiry within 24 hours
- We provide support in Chinese, English, French, German, Japanese and Spanish
- Extensive multi-media technical resources to help you
- We investigate all quality concerns to ensure our products perform to the highest standards

If the product does not perform as described on this datasheet, we will offer a refund or replacement. For full details of the Abpromise, please visit <https://www.abcam.co.jp/abpromise> or contact our technical team.

Terms and conditions

- Guarantee only valid for products bought direct from Abcam or one of our authorized distributors