

Anti-4-1BBL antibody ab64912

4 References [画像数 2](#)

製品の概要

製品名	Anti-4-1BBL antibody
製品の詳細	Rabbit polyclonal to 4-1BBL
由来種	Rabbit
アプリケーション	適用あり: ELISA, WB, ICC/IF, IHC-P
種交差性	交差種: Human
免疫原	Synthetic peptide corresponding to Human 4-1BBL (internal sequence).
特記事項	<p>The Life Science industry has been in the grips of a reproducibility crisis for a number of years. Abcam is leading the way in addressing this with our range of recombinant monoclonal antibodies and knockout edited cell lines for gold-standard validation. Please check that this product meets your needs before purchasing.</p> <p>If you have any questions, special requirements or concerns, please send us an inquiry and/or contact our Support team ahead of purchase. Recommended alternatives for this product can be found below, along with publications, customer reviews and Q&As</p>

製品の特性

製品の状態	Liquid
保存方法	Shipped at 4°C. Store at -20°C. Stable for 12 months at -20°C.
バッファー	<p>pH: 7.40</p> <p>Preservative: 0.02% Sodium azide</p> <p>Constituents: PBS, 50% Glycerol (glycerin, glycerine), 0.87% Sodium chloride</p>
精製度	Without Mg ²⁺ and Ca ²⁺
ポリ/モノ	Immunogen affinity purified
アイソタイプ	ポリクローナル
	IgG

アプリケーション

The Abpromise guarantee

Abpromise保証は、次のテスト済みアプリケーションにおけるab64912の使用に適用されます

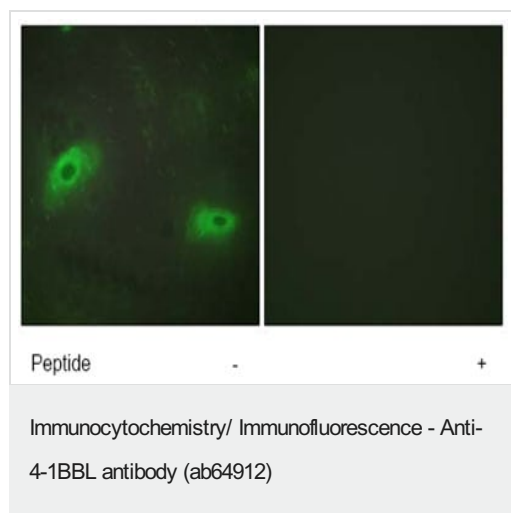
アプリケーションノートには、推奨の開始希釈率がありますが、適切な希釈率につきましてはご確認ください。

アプリケーション	Abreviews	特記事項
ELISA		Use at an assay dependent concentration.
WB		1/500 - 1/1000. Detects a band of approximately 25 kDa (predicted molecular weight: 27 kDa).
ICC/IF		1/500 - 1/1000.
IHC-P		Use at an assay dependent concentration. PubMed: 25409517

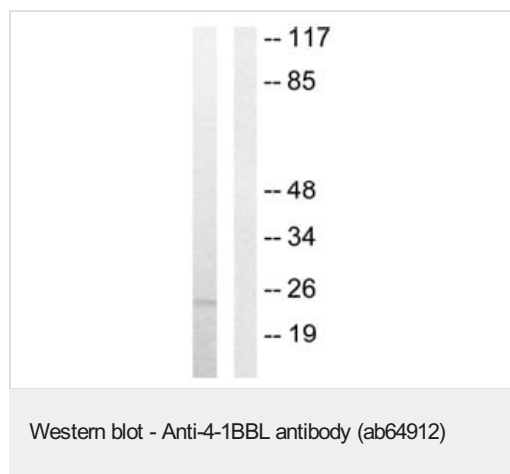
ターゲット情報

機能	Cytokine that binds to TNFRSF9. Induces the proliferation of activated peripheral blood T-cells. May have a role in activation-induced cell death (AICD). May play a role in cognate interactions between T-cells and B-cells/macrophages.
組織特異性	Expressed in brain, placenta, lung, skeletal muscle and kidney.
配列類似性	Belongs to the tumor necrosis factor family.
細胞内局在	Membrane.

画像



ab64912, at a 1/500 dilution, staining Human 4-1BBL in HeLa cells, by Immunofluorescence, with (+) or without (-) immunising peptide.



All lanes : Anti-4-1BBL antibody (ab64912) at 1/500 dilution

Lane 1 : Extracts from HUVEC cells

Lane 2 : Extracts from HUVEC cells with immunising peptide at 5 μ g

Lysates/proteins at 5 μ g per lane.

Predicted band size: 27 kDa

Observed band size: 25 kDa

Please note: All products are "FOR RESEARCH USE ONLY. NOT FOR USE IN DIAGNOSTIC PROCEDURES"

Our Abpromise to you: Quality guaranteed and expert technical support

- Replacement or refund for products not performing as stated on the datasheet
- Valid for 12 months from date of delivery
- Response to your inquiry within 24 hours
- We provide support in Chinese, English, French, German, Japanese and Spanish
- Extensive multi-media technical resources to help you
- We investigate all quality concerns to ensure our products perform to the highest standards

If the product does not perform as described on this datasheet, we will offer a refund or replacement. For full details of the Abpromise, please visit <https://www.abcam.co.jp/abpromise> or contact our technical team.

Terms and conditions

- Guarantee only valid for products bought direct from Abcam or one of our authorized distributors