

Total OXPHOS Human WB Antibody Cocktail ab110411

★★★★★ [4 Abreviews](#) [433 References](#) [画像数 2](#)

製品の概要

製品名	Total OXPHOS Human WB Antibody Cocktail
アッセイタイプ	Quantitative
種交差性	交差種: Human
製品の概要	<p>ab110411 contains 5 mAbs, one each against Complex I subunit NDUF8 (ab110242), Complex II subunit 30kDa (ab14714), Complex III subunit Core 2 (ab14745), Complex IV subunit II (ab110258), and ATP synthase subunit alpha (ab14748) as an optimized premixed cocktail. The cocktail is suitable for Western Blotting analysis of the relative levels of the 5 OXPHOS complexes in mitochondrial preparations from human sources.</p> <p>Altered levels of assembly can arise from mutations in individual subunits, mutations in assembly factors for the complex(es), mtDNA depletion or as a result of physiological and or pathological changes e.g. hormone treatment, exercise, diet or oxidative stress.</p> <p>The mAbs in the cocktail were chosen because they are against a subunit that is labile when its complex is not assembled. Moreover, the combination is readily resolved in SDS-PAGE when the appropriate gel conditions are used (Please refer to application notes).</p> <p>The Western blot cocktail is supplied at a concentration of 1.5 mg/mL.</p> <p>The five antibodies provided in the cocktail are all mouse monoclonal antibodies.</p> <p>We recommend using a high pH CAPS buffer / PVDF transfer protocol when using this antibody for Western blot. Please contact us for more details.</p> <p>Due to a policy change, the previously provided control for this kit has been removed.</p> <p>We do not recommend to boiling samples since it will cause signal reduction of several bands. We recommend warming to 37°C for 30 minutes prior to loading.</p>
特記事項	<p>Related products</p> <p>Review the mitochondrial assay guide, or the full metabolism assay guide to learn about more assays for metabolites, metabolic enzymes, mitochondrial function, and oxidative stress, and also how to assay metabolic function in live cells using your plate reader.</p>

アプリケーション適用あり: WB

製品の特性

保存方法Store at +4°C. Please refer to protocols.

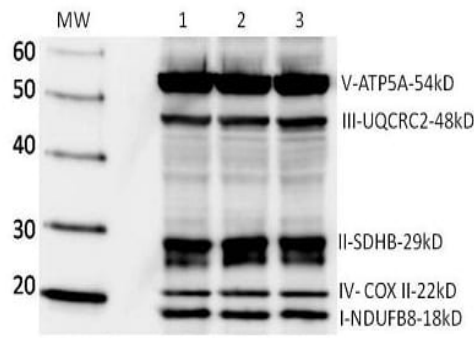
内容	360 µg
Premix Cocktail of 5 monoclonal antibodies	1 x 360µg

アプリケーション

The Abpromise guaranteeAbpromise保証は、次のテスト済みアプリケーションにおけるab110411の使用に適用されます
アプリケーションノートには、推奨の開始希釈率がありますが、適切な希釈率につきましてはご検討ください。

アプリケーション	Abreviews	特記事項
WB		Use at an assay dependent concentration. Recommended starting dilutions is 1:200 - 1:1000. However, optimal dilution should be established by the end-user. We recommend using a high pH CAPS / PVDF transfer protocol when using this antibody for Western blot. Please contact us for more details. ...

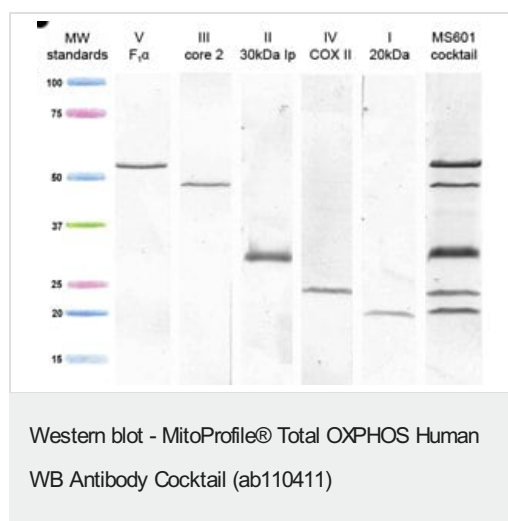
画像



Western Blot Abreview Image

This image is courtesy of an anonymous Abreview

Gel: Non-reduced Denaturing (4-12%)
Lanes 1-3: contain 3 individual Human B cell lymphoma samples 50 µg loaded per lane.
Blocked for 1 hour with 5% Milk at room temperature.
ab110411 used as per instructions.
Secondary: HRP-conjugated anti-mouse IgG used at 1/300
Detection method: ECL+ 2 minutes exposure.



Each lane contains 10 µg of mitochondria isolated from MRC5 fibroblasts.

ab110411(MS601) was used to label lane 6, and the individual antibodies

comprising the cocktail were used for lanes 1-5.

Please note: All products are "FOR RESEARCH USE ONLY. NOT FOR USE IN DIAGNOSTIC PROCEDURES"

Our Abpromise to you: Quality guaranteed and expert technical support

- Replacement or refund for products not performing as stated on the datasheet
- Valid for 12 months from date of delivery
- Response to your inquiry within 24 hours
- We provide support in Chinese, English, French, German, Japanese and Spanish
- Extensive multi-media technical resources to help you
- We investigate all quality concerns to ensure our products perform to the highest standards

If the product does not perform as described on this datasheet, we will offer a refund or replacement. For full details of the Abpromise, please visit <https://www.abcam.co.jp/abpromise> or contact our technical team.

Terms and conditions

- Guarantee only valid for products bought direct from Abcam or one of our authorized distributors