

Mouse Albumin Matched Antibody Pair Kit ab210890

リコンビナント

画像数 2

製品の概要

製品名 Mouse Albumin Matched Antibody Pair Kit

検出方法 Colorimetric

アッセイタイプ ELISA set

検出感度 46.52 pg/ml

検出範囲 125 pg/ml - 8000 pg/ml

種交差性 交差種: Mouse

製品の概要

Mouse Albumin Matched Antibody Pair Kits include a capture and a biotinylated detector antibody pair, along with a calibrated protein standard, suitable for sandwich ELISA. The Matched Antibody Pair Kit can be used to quantify native and recombinant mouse Albumin.

Optimization of the kit reagents to sample type, immunoassay format or instrumentation may be required. Guidelines for use of this kit in a standard 96-well microplate sandwich ELISA using HRP/TMB system of colorimetric detection is described in this assay procedure for the purposes of quantification.

Protocol information and tips on the use of the Matched Antibody Pair kits for sandwich ELISA can be found on our [website](#). An accessory pack can be purchased which includes buffer reagents required to perform 10 x 96-well plate sandwich ELISAs ([ab210905](#)).

For additional information on the performance of the antibody pair used in this kit, please see our equivalent SimpleStep ELISA kit [ab207620](#). Please note that while the antibody pair is the same provided in the corresponding SimpleStep ELISA Kit, due to differences in their formulation, this antibody pair cannot be used with the consumables provided with our SimpleStep ELISA Kits.

アプリケーション 適用あり: ELISA, IA

試験プラットフォーム Reagents

製品の特性

保存方法 Store at -20°C. Please refer to protocols.

内容	5 x 96 tests
Mouse Albumin Capture Antibody	2 x 50µg
Mouse Albumin Detector Antibody	2 x 12.5µg
Mouse Albumin Lyophilized Protein	2 vials

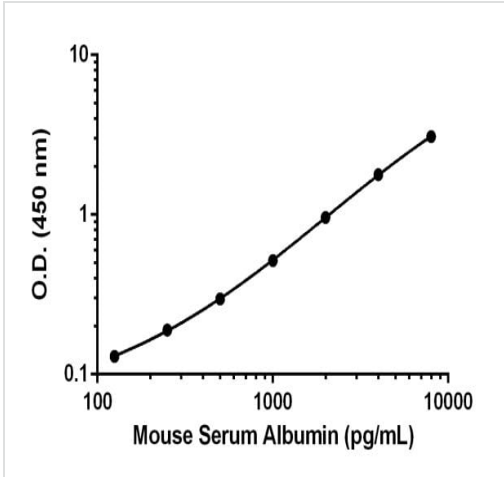
機能	Serum albumin, the main protein of plasma, has a good binding capacity for water, Ca(2+), Na(+), K(+), fatty acids, hormones, bilirubin and drugs. Its main function is the regulation of the colloidal osmotic pressure of blood. Major zinc transporter in plasma, typically binds about 80% of all plasma zinc.
組織特異性	Plasma.
関連疾患	Defects in ALB are a cause of familial dysalbuminemic hyperthyroxinemia (FDH) [MIM:103600]. FDH is a form of euthyroid hyperthyroxinemia that is due to increased affinity of ALB for T(4). It is the most common cause of inherited euthyroid hyperthyroxinemia in Caucasian population.
配列類似性	Belongs to the ALB/AFP/VDB family. Contains 3 albumin domains.
翻訳後修飾	Kenitra variant is partially O-glycosylated at Thr-620. It has two new disulfide bonds Cys-600 to Cys-602 and Cys-601 to Cys-606. Glycated in diabetic patients. Phosphorylation sites are present in the extracellular medium. Acetylated on Lys-223 by acetylsalicylic acid.
細胞内局在	Secreted.

アプリケーション

The Abpromise guarantee **Abpromise保証は、次のテスト済みアプリケーションにおけるab210890の使用に適用されず**
アプリケーションノートには、推奨の開始希釈率がありますが、適切な希釈率につきましてはご検討ください。

アプリケーション	Abreviews	特記事項
ELISA		Use at an assay dependent concentration.
IA		Use at an assay dependent concentration.




画像



Standard calibration curve. Background subtracted values are graphed.

To learn more about the advantages of recombinant antibodies see [here](#).

Powered by
recombinant antibodies

 Research with confidence Consistent and reproducible results	 Long-term and scalable supply Recombinant technology
 Success from the first experiment Confirmed specificity	 Ethical standards compliant Animal-free production

Sandwich ELISA - Mouse Albumin Matched
Antibody Pair Kit (ab210890)

Please note: All products are "FOR RESEARCH USE ONLY. NOT FOR USE IN DIAGNOSTIC PROCEDURES"

Our Promise to you: Quality guaranteed and expert technical support

- Replacement or refund for products not performing as stated on the datasheet
- Valid for 12 months from date of delivery

- Response to your inquiry within 24 hours
- We provide support in Chinese, English, French, German, Japanese and Spanish
- Extensive multi-media technical resources to help you
- We investigate all quality concerns to ensure our products perform to the highest standards

If the product does not perform as described on this datasheet, we will offer a refund or replacement. For full details of the Abpromise, please visit <https://www.abcam.co.jp/abpromise> or contact our technical team.

Terms and conditions

- Guarantee only valid for products bought direct from Abcam or one of our authorized distributors