

Human Granzyme B ELISA Kit (CTLA-1) ab46142

8 References 画像数 2

製品の概要

製品名 Human Granzyme B ELISA Kit (CTLA-1)

検出方法 Colorimetric

再現性 Intra-Assay (同時再現性)

サンプル	N	平均値	SD	CV%
A	15	356pg/ml	18	5.06%
B	15	73pg/ml	5	7.38%

Inter-Assay (日差再現性)

サンプル	N	平均値	SD	CV%
A	8	536pg/ml	30	5.59%
B	8	138pg/ml	9	6.76%

サンプルの種類 Cell culture supernatant, Serum, Plasma

アッセイタイプ Sandwich (quantitative)

検出感度 < 20 pg/ml

検出範囲 31.25 pg/ml - 1000 pg/ml

添加回収試験 特定サンプルでの回収試験

サンプルの種類	平均 %	測定範囲
Serum	73	31.25pg/ml - 1000pg/ml

全工程の試験時間 3h 45m

ステップ Multiple steps standard assay

種交差性 交差種: Human

製品の概要 Abcam's Granzyme B (CTLA-1) Human *in vitro* ELISA (Enzyme-Linked Immunosorbent Assay) kit is designed for the quantitative measurement of Granzyme B in Human serum, plasma, buffered solutions and cell culture medium.

A monoclonal antibody specific Granzyme B has been coated onto the wells of the microtiter strips provided. Samples, including standards of known Granzyme B concentrations, control specimens or unknowns are pipetted into these wells. During the first incubation, the standards or samples and a biotinylated monoclonal antibody specific for Granzyme B are simultaneously incubated. After washing, the enzyme Streptavidin-HRP, that binds the biotinylated antibody is added, incubated and washed. A TMB substrate solution is added which acts on the bound enzyme to induce a colored reaction product. The intensity of this colored product is directly proportional to the concentration of Granzyme B present in the samples.

This kit will recognize both endogenous and recombinant Human Granzyme B.

試験プラットフォーム

Microplate

製品の特性

保存方法

Store at +4°C. Please refer to protocols.

内容	ラベル	1 x 96 tests	2 x 96 tests
10X Standard Diluent Buffer	Black	1 x 15ml	1 x 25ml
200X Wash Buffer	White	1 x 10ml	2 x 10ml
Biotinylated Antibody Diluent	Red	1 x 7.5ml	1 x 13ml
Biotinylated anti-Granzyme B	Red	1 x 400µl	2 x 400µl
Chromogen TMB Substrate Solution		1 x 11ml	1 x 24ml
Granzyme B Microplate (12 x 8 well strips)		1 unit	2 units
Granzyme B Standard (Lyophilized)	Yellow	2 vials	4 vials
HRP Diluent	Red	1 x 12ml	1 x 23ml
Stop Reagent	Black	1 x 11ml	2 x 11ml
Streptavidin-HRP		2 x 5µl	4 x 5µl

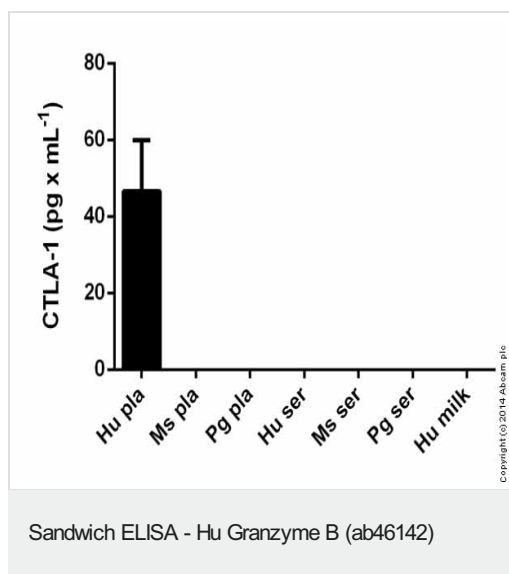
関連性

The lytic enzymes of cytotoxic lymphocytes seem to be contained within lysosome-like granules found in the cytoplasm. These granules contain perforin, a membrane pore-forming protein, and a family of serine proteases (granzymes). Granzyme B, a 32 kDa protein, is a serine Aspase associated with the granules of Natural Killer (NK) cells. Granzyme B seems to be able to elicit cell death, perhaps by activating an endogenous pathway of programmed cell death.

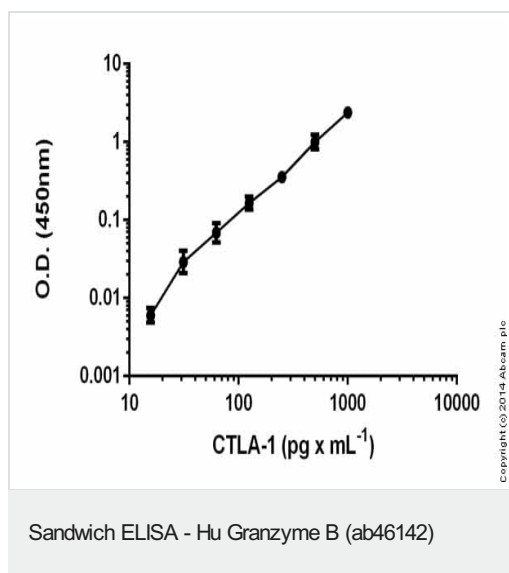
細胞内局在

Cytoplasmic

画像



Hu Granzyme B (CTLA-1) measured in biologicals showing quantity (pg) per mL of tested sample



Representative Standard Curve using ab46142

Please note: All products are "FOR RESEARCH USE ONLY. NOT FOR USE IN DIAGNOSTIC PROCEDURES"

Our Abpromise to you: Quality guaranteed and expert technical support

- Replacement or refund for products not performing as stated on the datasheet
- Valid for 12 months from date of delivery
- Response to your inquiry within 24 hours
- We provide support in Chinese, English, French, German, Japanese and Spanish
- Extensive multi-media technical resources to help you
- We investigate all quality concerns to ensure our products perform to the highest standards

If the product does not perform as described on this datasheet, we will offer a refund or replacement. For full details of the Abpromise, please visit <https://www.abcam.co.jp/abpromise> or contact our technical team.

Terms and conditions

- Guarantee only valid for products bought direct from Abcam or one of our authorized distributors