

Testosterone ELISA Kit ab108666

★★★★★ 5 Abreviews 52 References 画像数 2

製品の概要

製品名	Testosterone ELISA Kit			
検出方法	Colorimetric			
再現性	Intra-Assay (同時再現性)			
	サンプル	N	平均値	SD
	Control Sera	48		
				CV%
				<=5.8%
	Inter-Assay (日差再現性)			
	サンプル	N	平均値	SD
	Control Sera	48		
				CV%
				<=10.5%
サンプルの種類	Urine, Serum, Hep Plasma, Cit plasma			
アッセイタイプ	Competitive			
検出感度	= 0.07 ng/ml			
検出範囲	0.2 ng/ml - 16 ng/ml			
添加回収試験	= 105.5 %			
ステップ	Multiple steps standard assay			
種交差性	交差種: Human			
製品の概要	Testosterone ELISA kit is a competitive ELISA designed for the accurate quantitative measurement of Testosterone in serum and plasma.			

A 96-well plate has been precoated with anti-Testosterone antibodies. Samples and the Testosterone-HRP conjugate are added to the wells, where Testosterone in the sample competes with the added Testosterone-HRP for antibody binding. After incubation, the wells are washed to remove unbound material and TMB substrate is then added which is catalyzed by HRP to produce blue coloration. The reaction is terminated by addition of Stop Solution which stops the color development and produces a color change from blue to yellow. The intensity of signal is inversely proportional to the amount of Testosterone in the sample and the intensity is measured at 450 nm.

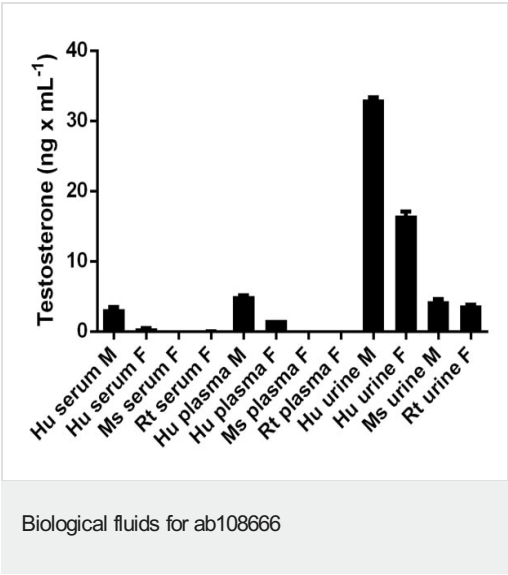
試験プラットフォーム Microplate

製品の特性

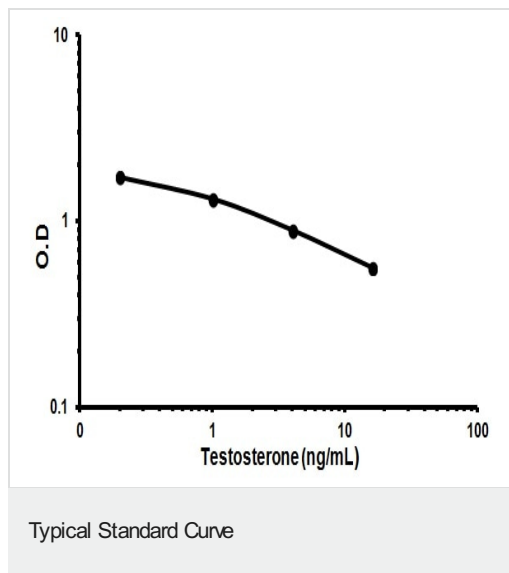
保存方法Store at +4°C. Please refer to protocols.

内容	1 x 96 tests
10X Wash Buffer	1 x 50ml
Cover foils	1 unit
Stop Solution	1 x 15ml
Strip holder	1 unit
Testosterone conjugate	1 x 12ml
Testosterone Control A	1 x 1ml
Testosterone Control B	1 x 1ml
Testosterone IgG Coated Microtiter Plate (12 x 8 wells)	1 unit
Testosterone Standard 0 - 0.0 ng/mL	1 x 1ml
Testosterone Standard 1 - 0.6 ng/mL	1 x 1ml
Testosterone Standard 2 - 1.4 ng/mL	1 x 1ml
Testosterone Standard 3 - 4.0 ng/mL	1 x 1ml
Testosterone Standard 4 - 16.0 ng/mL	1 x 1ml
TMB Substrate Solution	1 x 15ml

画像



Testosterone measured in biological fluids showing quantity (ng) per mL of tested sample. Samples were diluted 1-2 fold.



Representative Standard Curve using ab108666

**Please note:** All products are "FOR RESEARCH USE ONLY. NOT FOR USE IN DIAGNOSTIC PROCEDURES"

#### Our Abpromise to you: Quality guaranteed and expert technical support

---

- Replacement or refund for products not performing as stated on the datasheet
- Valid for 12 months from date of delivery
- Response to your inquiry within 24 hours
- We provide support in Chinese, English, French, German, Japanese and Spanish
- Extensive multi-media technical resources to help you
- We investigate all quality concerns to ensure our products perform to the highest standards

If the product does not perform as described on this datasheet, we will offer a refund or replacement. For full details of the Abpromise, please visit <https://www.abcam.co.jp/abpromise> or contact our technical team.

#### Terms and conditions

---

- Guarantee only valid for products bought direct from Abcam or one of our authorized distributors