

STAT3 (pY705 + Total) ELISA Kit ab176666

SimpleStep ELISA

3 References 画像数 6

製品の概要

製品名	STAT3 (pY705 + Total) ELISA Kit			
検出方法	Colorimetric			
再現性	Intra-Assay (同時再現性)			
	サンプル	N	平均値	SD
	STAT3(pY705)	6		CV%
	STAT3(Total)	6		2.9%
	Inter-Assay (日差再現性)			
	サンプル	N	平均値	SD
	STAT3(pY705)	3		CV%
	STAT3(Total)	3		7.4%
サンプルの種類	Cell Lysate, Tissue Homogenate			
アッセイタイプ	Semi-quantitative			
全工程の試験時間	1h 30m			
ステップ	One step assay			
種交差性	交差種: Human			
	交差が予測される動物種: Mouse, Rat 			

製品の概要

Abcam's STAT3 (pY705) and STAT3 (Total) *in vitro* SimpleStep ELISA™ (Enzyme-Linked Immunosorbent Assay) kit is designed for the semi-quantitative measurement of STAT3 (pY705) and Total STAT3 protein in Human cells.

The SimpleStep ELISA™ employs an affinity tag labeled capture antibody and a reporter conjugated detector antibody which immunocapture the sample analyte in solution. This entire complex (capture antibody/analyte/detector antibody) is in turn immobilized via immunoaffinity of an anti-tag antibody coating the well. To perform the assay, samples or standards are added to the wells, followed by the antibody mix. After incubation, the wells are washed to remove unbound

material. TMB substrate is added and during incubation is catalyzed by HRP, generating blue coloration. This reaction is then stopped by addition of Stop Solution completing any color change from blue to yellow. Signal is generated proportionally to the amount of bound analyte and the intensity is measured at 450 nm. Optionally, instead of the endpoint reading, development of TMB can be recorded kinetically at 600 nm.

As of October 2019, this kit was reformulated with new antibodies to maintain continued long term supply.

特記事項

Estimated sensitivity: Phospho-STAT3 (Tyr705): 30 µg/mL (tested with HeLa), Total STAT3: 15 µg/mL (tested with A431)

Range: Phospho-STAT3 (Tyr705): 20-2000 µg/mL, Total STAT3: 30-3000 µg/mL

Abcam has not and does not intend to apply for the REACH Authorisation of customers' uses of products that contain European Authorisation list (Annex XIV) substances.

It is the responsibility of our customers to check the necessity of application of REACH Authorisation, and any other relevant authorisations, for their intended uses.

試験プラットフォーム

Microplate

製品の特性

保存方法

Store at +4°C. Please refer to protocols.

内容	1 x 96 tests	1 x 96 tests
10X Wash Buffer PT	1 x 15ml	1 x 15ml
50X Cell Extraction Enhancer Solution	1 x 1ml	1 x 1ml
5X Cell Extraction Buffer PTR	1 x 12ml	1 x 12ml
Lyophilized STAT3 Control Lysate	1 vial	1 vial
Plate Seal	1 unit	1 unit
SimpleStep Pre-Coated 96-Well Microplate (ab206978)	1 unit	1 unit
STAT3 (pY705) Capture Antibody	1 x 1.5ml	1 x 1.5ml
STAT3 (pY705) Detector Antibody	1 x 1.5ml	1 x 1.5ml
STAT3 (Total) Capture Antibody	1 x 1.5ml	1 x 1.5ml
STAT3 (Total) Detector Antibody	1 x 1.5ml	1 x 1.5ml
Stop Solution	1 x 12ml	1 x 12ml
TMB Substrate	1 x 12ml	1 x 12ml

機能

Signal transducer and transcription activator that mediates cellular responses to interleukins, KITLG/SCF, LEP and other growth factors. Once activated, recruits coactivators, such as NCOA1

or MED1, to the promoter region of the target gene (PubMed:17344214). May mediate cellular responses to activated FGFR1, FGFR2, FGFR3 and FGFR4. Binds to the interleukin-6 (IL-6)-responsive elements identified in the promoters of various acute-phase protein genes. Activated by IL31 through IL31RA. Involved in cell cycle regulation by inducing the expression of key genes for the progression from G1 to S phase, such as CCND1 (PubMed:17344214). Mediates the effects of LEP on melanocortin production, body energy homeostasis and lactation (By similarity). May play an apoptotic role by transactivating BIRC5 expression under LEP activation (PubMed:18242580). Cytoplasmic STAT3 represses macroautophagy by inhibiting EIF2AK2/PKR activity.

組織特異性

Heart, brain, placenta, lung, liver, skeletal muscle, kidney and pancreas.

関連疾患

Hyperimmunoglobulin E recurrent infection syndrome, autosomal dominant
Autoimmune disease, multisystem, infantile-onset

配列類似性

Belongs to the transcription factor STAT family.
Contains 1 SH2 domain.

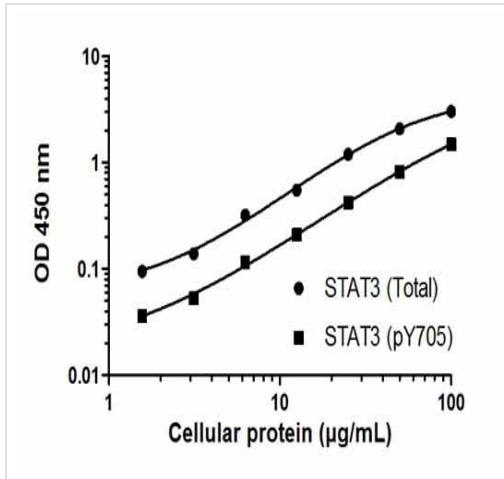
翻訳後修飾

Tyrosine phosphorylated upon stimulation with EGF. Tyrosine phosphorylated in response to constitutively activated FGFR1, FGFR2, FGFR3 and FGFR4 (By similarity). Activated through tyrosine phosphorylation by BMX. Tyrosine phosphorylated in response to IL6, IL11, LIF, CNTF, KITLG/SCF, CSF1, EGF, PDGF, IFN-alpha, LEP and OSM. Activated KIT promotes phosphorylation on tyrosine residues and subsequent translocation to the nucleus. Phosphorylated on serine upon DNA damage, probably by ATM or ATR. Serine phosphorylation is important for the formation of stable DNA-binding STAT3 homodimers and maximal transcriptional activity. ARL2BP may participate in keeping the phosphorylated state of STAT3 within the nucleus. Upon LPS challenge, phosphorylated within the nucleus by IRAK1. Upon erythropoietin treatment, phosphorylated on Ser-727 by RPS6KA5. Phosphorylation at Tyr-705 by PTK6 or FER leads to an increase of its transcriptional activity. Dephosphorylation on tyrosine residues by PTPN2 negatively regulates IL6/interleukin-6 signaling.

細胞内局在

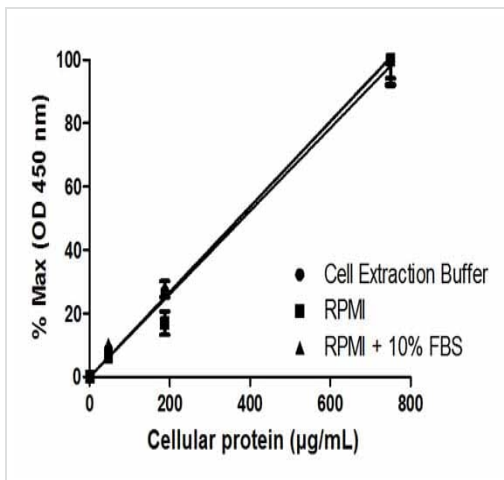
Cytoplasm. Nucleus. Shuttles between the nucleus and the cytoplasm. Translocated into the nucleus upon tyrosine phosphorylation and dimerization, in response to signaling by activated FGFR1, FGFR2, FGFR3 or FGFR4. Constitutive nuclear presence is independent of tyrosine phosphorylation. Predominantly present in the cytoplasm without stimuli. Upon leukemia inhibitory factor (LIF) stimulation, accumulates in the nucleus. The complex composed of BART and ARL2 plays an important role in the nuclear translocation and retention of STAT3. Identified in a complex with LYN and PAG1.

画像



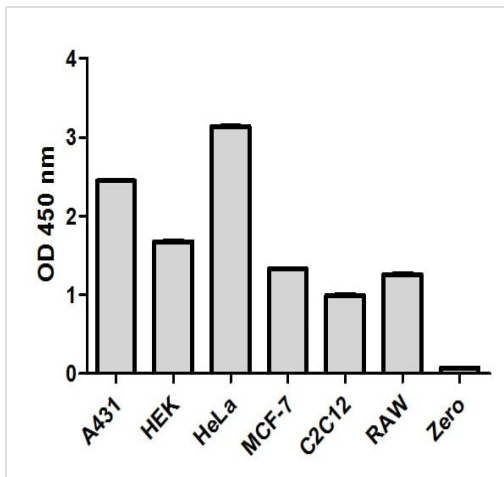
Typical cell lysate dilution series

Example of a typical STAT3 (pY705) and STAT3 (Total) cell lysate dilution series. Background-subtracted data values (mean \pm SD) are graphed.



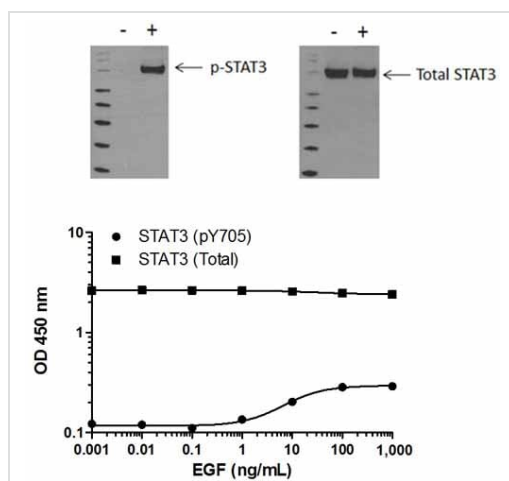
Linearity of dilution

Linearity of dilution in representative sample matrices. Cellular lysates were prepared at 3 concentrations in common media containing 1X Cell Extraction Buffer PTR. Data from duplicate measurements of STAT3 (pY705) are normalized and plotted.



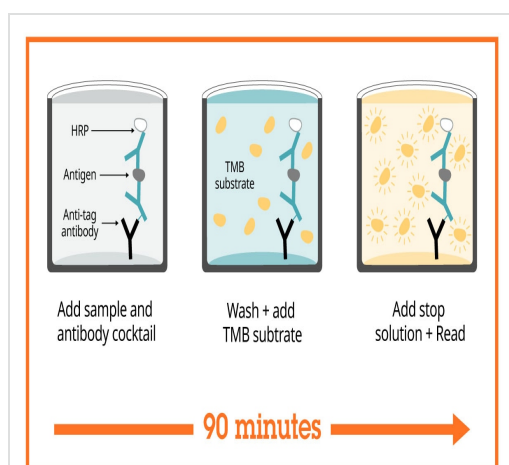
Comparison of STAT3 expression in different cell lines

Cell line analysis for Total STAT3 from 200 µg/mL preparations of cell extracts. Data from triplicate measurements (mean \pm SD) are plotted and compared to 1X Cell Extraction Buffer PTR (zero).



STAT3 (pY705) phosphorylation in response to EGF treatment

Induction of STAT3 (pY705) phosphorylation in A431 cells in response to EGF treatment. A431 cells were cultured in 96-well tissue culture plates and treated (15 min) with a dose-range of EGF before cell lysis. Data from quadruplicate measurements of STAT3 (pY705) are plotted and compared against total STAT3 protein levels. Comparative STAT3 (pY705) and STAT3 (Total) data also shown by Western Blot.



Sandwich ELISA - STAT3 (pY705 + Total) ELISA Kit (ab176666)

SimpleStep ELISA technology allows the formation of the antibody-antigen complex in one single step, reducing assay time to 90 minutes. Add samples or standards and antibody mix to wells all at once, incubate, wash, and add your final substrate. See protocol for a detailed step-by-step guide.

**Get more done with
SimpleStep ELISA**



Easy to use
Single-wash 90-minute
protocol



Flexible
Matched antibody pairs
available



Precision antibodies
High sensitivity, specificity
and reproducibility



Scalable
Now in 10-pack and
384-well formats

Sandwich ELISA - STAT3 (pY705 + Total) ELISA Kit
(ab176666)

To learn more about the advantages of SimpleStep ELISA® kits
see [here](#).

Please note: All products are "FOR RESEARCH USE ONLY. NOT FOR USE IN DIAGNOSTIC PROCEDURES"

Our Abpromise to you: Quality guaranteed and expert technical support

- Replacement or refund for products not performing as stated on the datasheet
- Valid for 12 months from date of delivery
- Response to your inquiry within 24 hours
- We provide support in Chinese, English, French, German, Japanese and Spanish
- Extensive multi-media technical resources to help you
- We investigate all quality concerns to ensure our products perform to the highest standards

If the product does not perform as described on this datasheet, we will offer a refund or replacement. For full details of the Abpromise, please visit <https://www.abcam.co.jp/abpromise> or contact our technical team.

Terms and conditions

- Guarantee only valid for products bought direct from Abcam or one of our authorized distributors