

Rat TIMP1 ELISA Kit ab100782

画像数 2

製品の概要

製品名	Rat TIMP1 ELISA Kit
検出方法	Colorimetric
サンプルの種類	Cell culture supernatant, Serum, Plasma
アッセイタイプ	Sandwich (quantitative)
検出感度	< 4 pg/ml
検出範囲	4.1 pg/ml - 3000 pg/ml
添加回収試験	93 %

特定サンプルでの回収試験

サンプルの種類	平均 %	測定範囲
Cell culture supernatant	93.26	86% - 104%
Serum	92.79	85% - 104%
Plasma	94.65	84% - 103%

ステップ Multiple steps standard assay

種交差性 交差種: Rat

製品の概要

Abcam's TIMP1 Rat ELISA (Enzyme-Linked Immunosorbent Assay) kit is an *in vitro* enzyme-linked immunosorbent assay for the quantitative measurement of rat TIMP1 in serum, plasma and cell culture supernatants.

This assay employs an antibody specific for rat TIMP1 coated on a 96-well plate. Standards and samples are pipetted into the wells and TIMP1 present in a sample is bound to the wells by the immobilized antibody. The wells are washed and biotinylated anti-rat TIMP- 1 antibody is added. After washing away unbound biotinylated antibody, HRP-conjugated streptavidin is pipetted to the wells. The wells are again washed, a TMB substrate solution is added to the wells and color develops in proportion to the amount of TIMP1 bound. The Stop Solution changes the color from blue to yellow, and the intensity of the color is measured at 450 nm.

試験プラットフォーム Microplate

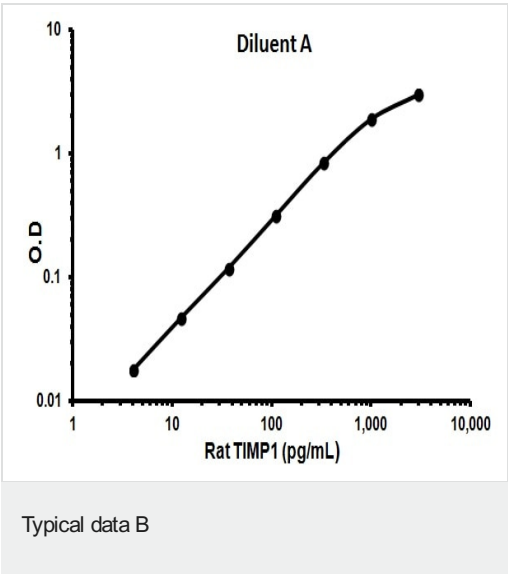
製品の特性

保存方法Store at -20°C. Please refer to protocols.

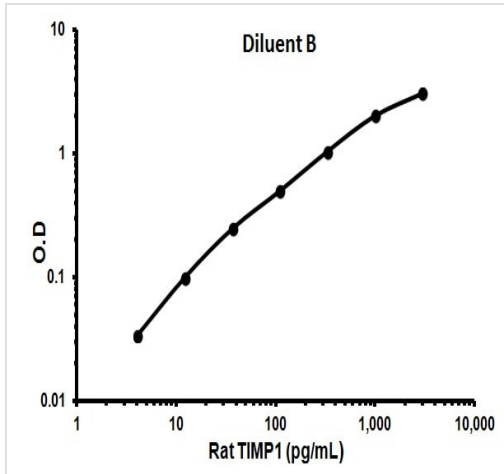
内容	1 x 96 tests
20X Wash Buffer	1 x 25ml
400X HRP-Streptavidin Concentrate	1 x 200μl
5X Assay Diluent B	1 x 15ml
Assay Diluent A	1 x 30ml
Biotinylated anti-rat TIMP1	2 vials
Recombinant rat TIMP1 Standard (lyophilized)	2 vials
Stop Solution	1 x 8ml
TIMP1 Microplate (12 x 8 wells)	1 unit
TMB One-Step Substrate Reagent	1 x 12ml

機能	Complexes with metalloproteinases (such as collagenases) and irreversibly inactivates them by binding to their catalytic zinc cofactor. Also mediates erythropoiesis in vitro; but, unlike IL-3, it is species-specific, stimulating the growth and differentiation of only human and murine erythroid progenitors. Known to act on MMP-1, MMP-2, MMP-3, MMP-7, MMP-8, MMP-9, MMP-10, MMP-11, MMP-12, MMP-13 and MMP-16. Does not act on MMP-14.
配列類似性	Belongs to the protease inhibitor I35 (TIMP) family. Contains 1 NTR domain.
翻訳後修飾	The activity of TIMP1 is dependent on the presence of disulfide bonds.
細胞内局在	Secreted.

画像



Representative standard curve using ab100782



Representative standard curve using ab100782

Typical data A

Please note: All products are "FOR RESEARCH USE ONLY. NOT FOR USE IN DIAGNOSTIC PROCEDURES"

Our Abpromise to you: Quality guaranteed and expert technical support

- Replacement or refund for products not performing as stated on the datasheet
- Valid for 12 months from date of delivery
- Response to your inquiry within 24 hours
- We provide support in Chinese, English, French, German, Japanese and Spanish
- Extensive multi-media technical resources to help you
- We investigate all quality concerns to ensure our products perform to the highest standards

If the product does not perform as described on this datasheet, we will offer a refund or replacement. For full details of the Abpromise, please visit <https://www.abcam.co.jp/abpromise> or contact our technical team.

Terms and conditions

- Guarantee only valid for products bought direct from Abcam or one of our authorized distributors