

Rat MMP8 ELISA Kit ab100779

1 References 画像数 2

製品の概要

製品名	Rat MMP8 ELISA Kit
検出方法	Colorimetric
サンプルの種類	Cell culture supernatant, Serum, Plasma
アッセイタイプ	Sandwich (quantitative)
検出感度	< 50 pg/ml
検出範囲	0.05 ng/ml - 40 ng/ml
添加回収試験	100 %

特定サンプルでの回収試験

サンプルの種類	平均 %	測定範囲
Cell culture supernatant	95.42	83% - 108%
Serum	109.78	99% - 118%
Plasma	107.6	98% - 118%

ステップ Multiple steps standard assay

種交差性 交差種: Rat

製品の概要 Abcam's MMP8 Rat ELISA (Enzyme-Linked Immunosorbent Assay) kit is an *in vitro* enzyme-linked immunosorbent assay for the quantitative measurement of Rat MMP8 in serum, plasma (using heparin as an anticoagulant, EDTA and Citrate are not recommended), and cell culture supernatants.

This assay employs an antibody specific for MMP8 coated on a 96-well plate. Standards and samples are pipetted into the wells and MMP8 present in a sample is bound to the wells by the immobilized antibody. The wells are washed and biotinylated anti-Rat MMP8 antibody is added. After washing away unbound biotinylated antibody, HRP-conjugated streptavidin is pipetted to the wells. The wells are again washed, a TMB substrate solution is added to the wells and color develops in proportion to the amount of MMP8 bound. The Stop Solution changes the color from blue to yellow, and the intensity of the color is measured at 450 nm.

試験プラットフォーム Microplate

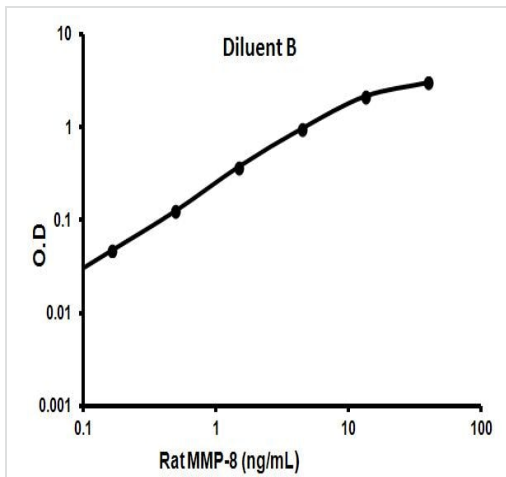
製品の特性

保存方法 Store at -20°C. Please refer to protocols.

内容	1 x 96 tests
160X HRP-Streptavidin Concentrate	1 x 200µl
20X Wash Buffer	1 x 25ml
5X Assay Diluent B	1 x 15ml
Assay Diluent A	1 x 30ml
Biotinylated anti-rat MMP8	2 vials
MMP8 Microplate (12 x 8 wells)	1 unit
Recombinant rat MMP8 Standard (lyophilized)	2 vials
Stop Solution	1 x 8ml
TMB One-Step Substrate Reagent	1 x 12ml

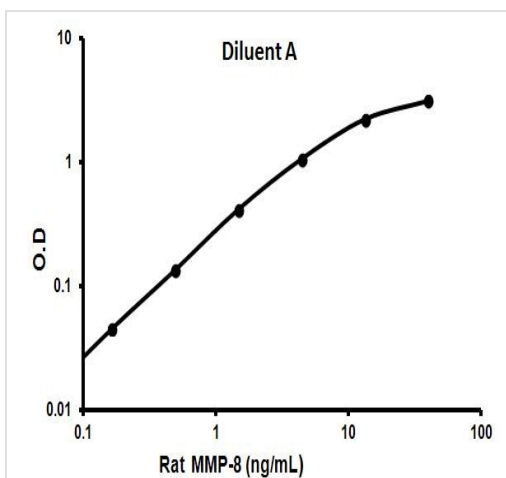
機能	Can degrade fibrillar type I, II, and III collagens.
組織特異性	Neutrophils.
配列類似性	Belongs to the peptidase M10A family. Contains 4 hemopexin-like domains.
ドメイン	The conserved cysteine present in the cysteine-switch motif binds the catalytic zinc ion, thus inhibiting the enzyme. The dissociation of the cysteine from the zinc ion upon the activation-peptide release activates the enzyme.
細胞内局在	Cytoplasmic granule. Secreted > extracellular space > extracellular matrix. Stored in intracellular granules.

画像



Representative standard curve using ab100779

Typical data B



Representative standard curve using ab100779

Typical data A

Please note: All products are "FOR RESEARCH USE ONLY. NOT FOR USE IN DIAGNOSTIC PROCEDURES"

Our Abpromise to you: Quality guaranteed and expert technical support

- Replacement or refund for products not performing as stated on the datasheet
- Valid for 12 months from date of delivery
- Response to your inquiry within 24 hours
- We provide support in Chinese, English, French, German, Japanese and Spanish
- Extensive multi-media technical resources to help you
- We investigate all quality concerns to ensure our products perform to the highest standards

If the product does not perform as described on this datasheet, we will offer a refund or replacement. For full details of the Abpromise, please visit <https://www.abcam.co.jp/abpromise> or contact our technical team.

Terms and conditions

- Guarantee only valid for products bought direct from Abcam or one of our authorized distributors