

Rat Lipocalin-2 ELISA Kit (NGAL) ab119602

★★★★★ [1 Abreviews](#) [11 References](#) [画像数 3](#)

製品の概要

| | |
|---------|--|
| 製品名 | Rat Lipocalin-2 ELISA Kit (NGAL) |
| 検出方法 | Colorimetric |
| サンプルの種類 | Cell culture supernatant, Urine, Serum, Plasma |
| アッセイタイプ | Sandwich (quantitative) |
| 検出感度 | < 10 pg/ml |
| 検出範囲 | 78 pg/ml - 5000 pg/ml |
| ステップ | Multiple steps standard assay |
| 種交差性 | 交差種: Rat |

交差が予測される動物種: Mouse, Human, Pig 

製品の概要

Abcam's rat Lipocalin-2 (NGAL) *in vitro* ELISA (Enzyme-Linked Immunosorbent Assay) kit is designed for the accurate quantitative measurement of rat Lipocalin-2 in cell culture supernatants, serum plasma (heparin) and urine.

A Lipocalin-2 specific mouse monoclonal antibody for Lipocalin-2 has been precoated onto 96-well plates. Standards and test samples are added to the wells and incubated. A biotinylated detection polyclonal antibody from goat specific for Lipocalin-2 is then added followed by washing with PBS or TBS buffer. Avidin-Biotin-Peroxidase Complex is added and unbound conjugates are washed away with PBS or TBS buffer. TMB is then used to visualize the HRP enzymatic reaction. TMB is catalyzed by HRP to produce a blue color product that changes into yellow after adding acidic stop solution. The density of yellow coloration is directly proportional to the rat Lipocalin-2 amount of sample captured in plate.

試験プラットフォーム

Microplate

製品の特性

保存方法

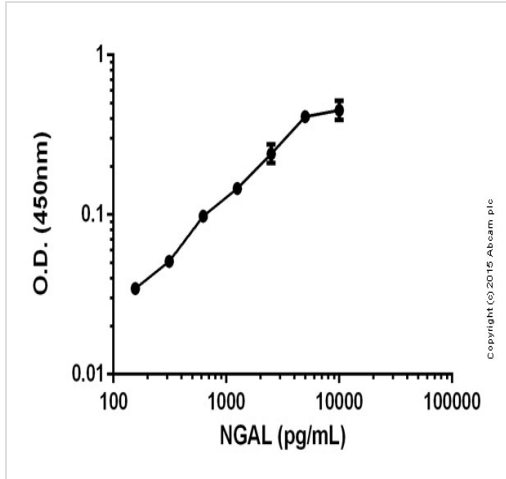
Store at -20°C. Please refer to protocols.

| 内容 | ラベル | 1 x 96 tests | 1 x 96 tests |
|-------------------------|-----------|--------------|--------------|
| ABC Diluent Buffer | Blue Cap | 1 x 12ml | 1 x 12ml |
| Antibody Diluent Buffer | Green Cap | 1 x 12ml | 1 x 12ml |

| 内容 | ラベル | 1 x 96 tests | 1 x 96 tests |
|---|--------------|--------------|--------------|
| Anti-rat Lipocalin-2 antibody Microplate (12 x 8 wells) | | 1 unit | 1 unit |
| Avidin-Biotin-Peroxidase Complex (ABC) | | 1 x 100µl | 1 x 100µl |
| Biotinylated anti-rat Lipocalin-2 antibody | | 1 x 100µl | 1 x 100µl |
| Lyophilized recombinant rat Lipocalin-2 standard | | 2 x 10ng | 2 x 10ng |
| Plate Seal | | 4 units | 4 units |
| Sample Diluent Buffer | Green Cap | 1 x 30ml | 1 x 30ml |
| TMB Color Developing Agent | Amber Bottle | 1 x 10ml | 1 x 10ml |
| TMB Stop Solution | Yellow Cap | 1 x 10ml | 1 x 10ml |
| Wash Buffer (25X) | | 1 x 20ml | 1 x 20ml |

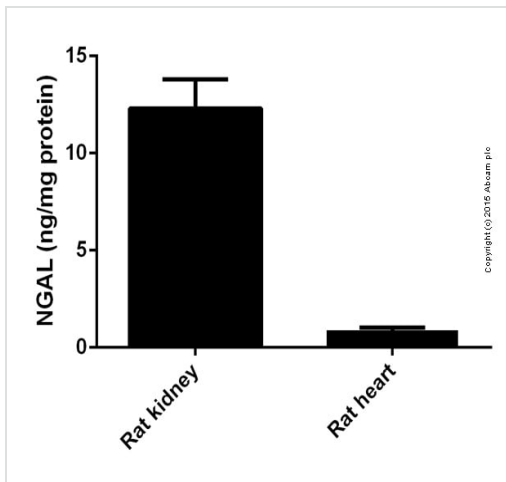
| | |
|--------------|---|
| 機能 | Iron-trafficking protein involved in multiple processes such as apoptosis, innate immunity and renal development. Binds iron through association with 2,5-dihydroxybenzoic acid (2,5-DHBA), a siderophore that shares structural similarities with bacterial enterobactin, and delivers or removes iron from the cell, depending on the context. Iron-bound form (holo-24p3) is internalized following binding to the SLC22A17 (24p3R) receptor, leading to release of iron and subsequent increase of intracellular iron concentration. In contrast, association of the iron-free form (apo-24p3) with the SLC22A17 (24p3R) receptor is followed by association with an intracellular siderophore, iron chelation and iron transfer to the extracellular medium, thereby reducing intracellular iron concentration. Involved in apoptosis due to interleukin-3 (IL3) deprivation: iron-loaded form increases intracellular iron concentration without promoting apoptosis, while iron-free form decreases intracellular iron levels, inducing expression of the proapoptotic protein BCL2L11/BIM, resulting in apoptosis. Involved in innate immunity, possibly by sequestering iron, leading to limit bacterial growth. |
| 組織特異性 | Expressed in bone marrow and in tissues that are prone to exposure to microorganism. High expression is found in bone marrow as well as in uterus, prostate, salivary gland, stomach, appendix, colon, trachea and lung. Not found in the small intestine or peripheral blood leukocytes. |
| 配列類似性 | Belongs to the calycin superfamily. Lipocalin family. |
| 細胞内局在 | Secreted. Upon binding to the SLC22A17 (24p3R) receptor, it is internalized. |

画像



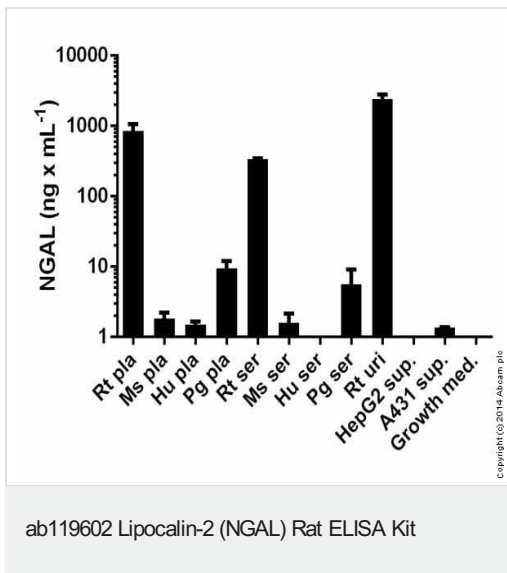
Colorimetric standard curve: mean of duplicates (+/-) with background readings subtracted

Sandwich ELISA - ab119602 Lipocalin-2 Rat



NGAL (ng per mg protein) measured in tissue lysates

Sandwich ELISA - ab119602 Lipocalin-2 Rat



Lipocalin-2 measured in biological fluids showing quantity (ng) per mL of tested sample

Please note: All products are "FOR RESEARCH USE ONLY. NOT FOR USE IN DIAGNOSTIC PROCEDURES"

Our Abpromise to you: Quality guaranteed and expert technical support

- Replacement or refund for products not performing as stated on the datasheet
- Valid for 12 months from date of delivery
- Response to your inquiry within 24 hours
- We provide support in Chinese, English, French, German, Japanese and Spanish
- Extensive multi-media technical resources to help you
- We investigate all quality concerns to ensure our products perform to the highest standards

If the product does not perform as described on this datasheet, we will offer a refund or replacement. For full details of the Abpromise, please visit <https://www.abcam.co.jp/abpromise> or contact our technical team.

Terms and conditions

- Guarantee only valid for products bought direct from Abcam or one of our authorized distributors