

Rat Leptin ELISA Kit ab100773

★★★★★ [1 Abreviews](#) [22 References](#) [画像数 4](#)

製品の概要

| | |
|---------|---|
| 製品名 | Rat Leptin ELISA Kit |
| 検出方法 | Colorimetric |
| サンプルの種類 | Cell culture supernatant, Serum, Plasma |
| アッセイタイプ | Sandwich (quantitative) |
| 検出感度 | < 30 pg/ml |
| 検出範囲 | 10.97 pg/ml - 8000 pg/ml |
| 添加回収試験 | 84 % |

特定サンプルでの回収試験

| サンプルの種類 | 平均 % | 測定範囲 |
|--------------------------|-------|------------|
| Cell culture supernatant | 75.43 | 68% - 89% |
| Serum | 92.32 | 83% - 102% |
| Plasma | 84.25 | 75% - 94% |

ステップ Multiple steps standard assay

種交差性 交差種: Rat

製品の概要 Abcam's Leptin Rat ELISA (Enzyme-Linked Immunosorbent Assay) kit is an *in vitro* enzyme-linked immunosorbent assay for the quantitative measurement of rat Leptin in serum, plasma and cell culture supernatants.

This assay employs an antibody specific for rat Leptin coated on a 96-well plate. Standards and samples are pipetted into the wells and Leptin present in a sample is bound to the wells by the immobilized antibody. The wells are washed and biotinylated anti-rat Leptin antibody is added. After washing away unbound biotinylated antibody, HRP-conjugated streptavidin is pipetted to the wells. The wells are again washed, a TMB substrate solution is added to the wells and color develops in proportion to the amount of Leptin bound. The Stop Solution changes the color from blue to yellow, and the intensity of the color is measured at 450 nm.

試験プラットフォーム Microplate

製品の特性

保存方法

Store at -20°C. Please refer to protocols.

| 内容 | 1 x 96 tests |
|---|--------------|
| 200X HRP-Streptavidin Concentrate | 1 x 200µl |
| 20X Wash Buffer | 1 x 25ml |
| 5X Assay Diluent B | 1 x 15ml |
| 5X Assay Diluent D | 1 x 15ml |
| Biotinylated anti-Rat Leptin | 2 vials |
| Leptin Microplate (12 x 8 wells) | 1 unit |
| Recombinant rat Leptin Standard (lyophilized) | 2 vials |
| Stop Solution | 1 x 8ml |
| TMB One-Step Substrate Reagent | 1 x 12ml |

機能

May function as part of a signaling pathway that acts to regulate the size of the body fat depot. An increase in the level of LEP may act directly or indirectly on the CNS to inhibit food intake and/or regulate energy expenditure as part of a homeostatic mechanism to maintain constancy of the adipose mass.

関連疾患

Defects in LEP may be a cause of obesity (OBESITY) [MIM:601665]. It is a condition characterized by an increase of body weight beyond the limitation of skeletal and physical requirements, as the result of excessive accumulation of body fat.

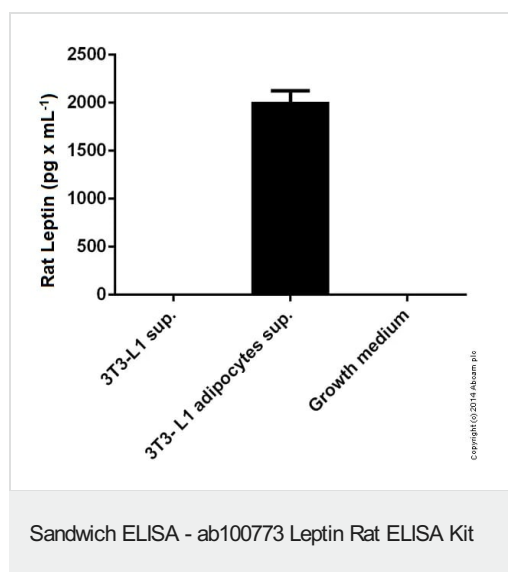
配列類似性

Belongs to the leptin family.

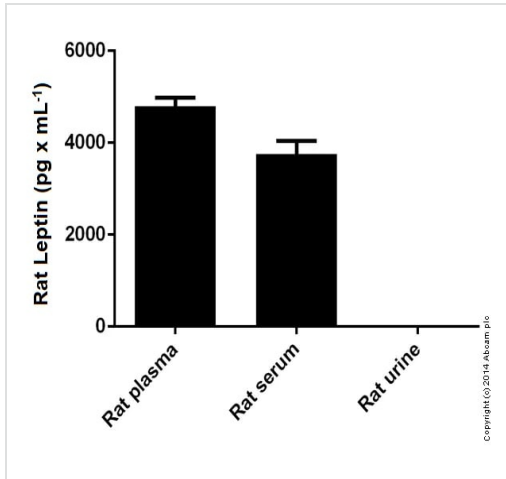
細胞内局在

Secreted.

画像

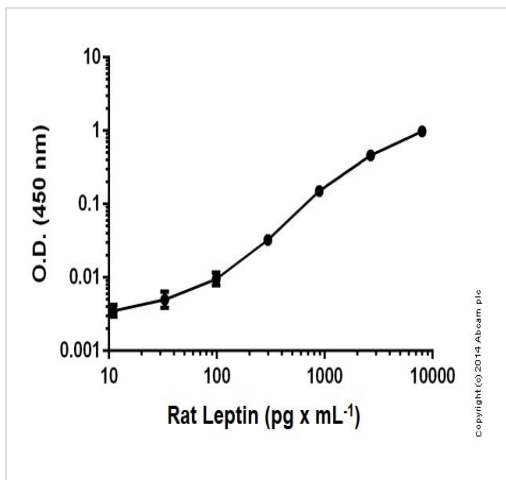


Rat Leptin measured in supernatanses showing quantity (ng) per mL of tested sample



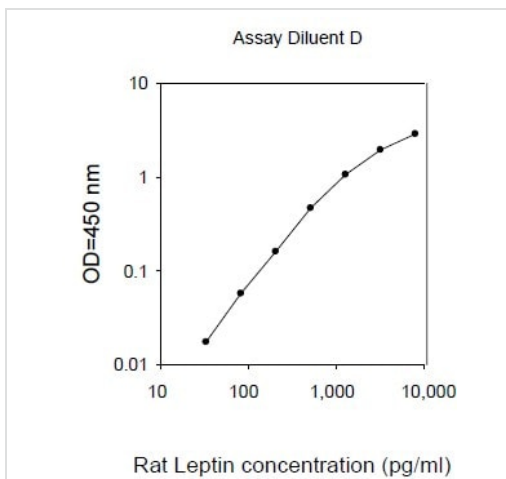
Rat Leptin measured in biofluids showing quantity (ng) per mL of tested sample

Sandwich ELISA - ab100773 Leptin Rat ELISA Kit



Standard curve: mean of duplicates (+/-SD) with background readings subtracted

Sandwich ELISA - ab100773 Leptin Rat ELISA Kit



ELISA - Leptin Rat ELISA Kit (ab100773)

Please note: All products are "FOR RESEARCH USE ONLY. NOT FOR USE IN DIAGNOSTIC PROCEDURES"

Our Abpromise to you: Quality guaranteed and expert technical support

- Replacement or refund for products not performing as stated on the datasheet
- Valid for 12 months from date of delivery
- Response to your inquiry within 24 hours

- We provide support in Chinese, English, French, German, Japanese and Spanish
- Extensive multi-media technical resources to help you
- We investigate all quality concerns to ensure our products perform to the highest standards

If the product does not perform as described on this datasheet, we will offer a refund or replacement. For full details of the Abpromise, please visit <https://www.abcam.co.jp/abpromise> or contact our technical team.

Terms and conditions

- Guarantee only valid for products bought direct from Abcam or one of our authorized distributors