

Rat Albumin ELISA Kit ab108790

5 References 画像数 2

製品の概要

製品名	Rat Albumin ELISA Kit			
検出方法	Colorimetric			
再現性	Intra-Assay (同時再現性)			
	サンプル	N	平均値	SD
	Overall			CV%
				3.8%
	Inter-Assay (日差再現性)			
	サンプル	N	平均値	SD
	Overall			CV%
				9.9%
サンプルの種類	Serum, Plasma			
アッセイタイプ	Competitive			
検出感度	= 0.74 µg/ml			
検出範囲	1.563 µg/ml - 12.5 µg/ml			
添加回収試験	98 %			
全工程の試験時間	2h 00m			
ステップ	Multiple steps standard assay			
種交差性	交差種: Rat			
製品の概要	Abcam's Albumin Rat <i>in vitro</i> competitive ELISA (Enzyme-Linked Immunosorbent Assay) kit is designed for the quantitative measurement of rat Albumin in plasma and serum.			

An Albumin specific antibody has been precoated onto 96-well plates and blocked. Standards or test samples are added to the wells and subsequently biotinylated Albumin is added and then followed by washing with wash buffer. Streptavidin-Peroxidase Complex is added and unbound conjugates are washed away with wash buffer. TMB is then used to visualize Streptavidin-Peroxidase enzymatic reaction. TMB is catalyzed by Streptavidin-Peroxidase to produce a blue color product that changes into yellow after adding acidic stop solution. The density of yellow coloration is inversely proportional to the amount of Albumin captured in plate.

The entire kit may be stored at -20°C for long term storage before reconstitution - Avoid repeated freeze-thaw cycles.

試験プラットフォーム

Microplate

製品の特性

保存方法

Store at -20°C. Please refer to protocols.

内容	1 x 96 tests
100X Streptavidin-Peroxidase Conjugate	1 x 80µl
10X Diluent N Concentrate	1 x 30ml
1X Biotinylated Rat Albumin Protein (Lyophilized)	1 vial
20X Wash Buffer Concentrate	1 x 30ml
Albumin Microplate (12 x 8 well strips)	1 unit
Albumin Standard	1 vial
Chromogen Substrate	1 x 7ml
Sealing Tapes	3 units
Stop Solution	1 x 11ml

機能

Serum albumin, the main protein of plasma, has a good binding capacity for water, Ca(2+), Na(+), K(+), fatty acids, hormones, bilirubin and drugs. Its main function is the regulation of the colloidal osmotic pressure of blood. Major zinc transporter in plasma, typically binds about 80% of all plasma zinc.

組織特異性

Plasma.

関連疾患

Defects in ALB are a cause of familial dysalbuminemic hyperthyroxinemia (FDH) [MIM:103600]. FDH is a form of euthyroid hyperthyroxinemia that is due to increased affinity of ALB for T(4). It is the most common cause of inherited euthyroid hyperthyroxinemia in Caucasian population.

配列類似性

Belongs to the ALB/AFP/VDB family.
Contains 3 albumin domains.

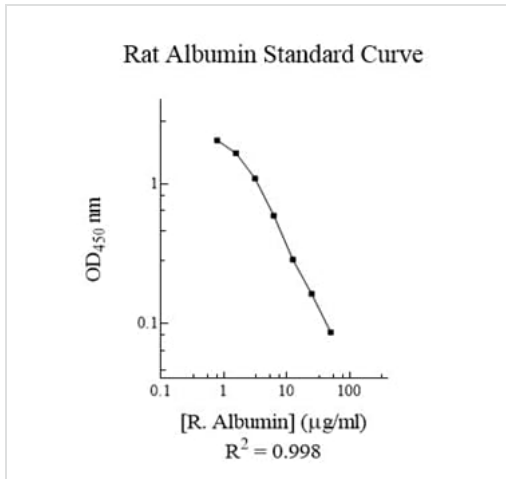
翻訳後修飾

Kenitra variant is partially O-glycosylated at Thr-620. It has two new disulfide bonds Cys-600 to Cys-602 and Cys-601 to Cys-606.
Glycated in diabetic patients.
Phosphorylation sites are present in the extracellular medium.
Acetylated on Lys-223 by acetylsalicylic acid.

細胞内局在

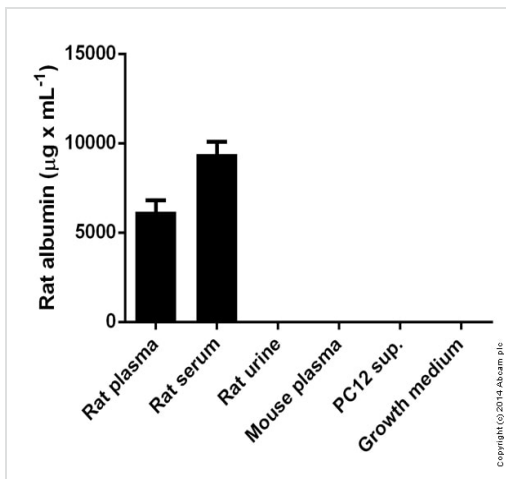
Secreted.

画像



Representative Standard Curve using ab108790.

Typical Standard Curve



Rat albumin measured in various samples showing quantity (microgram) per mL of tested sample

Competitive ELISA - Rat albumin (ab108790)

Please note: All products are "FOR RESEARCH USE ONLY. NOT FOR USE IN DIAGNOSTIC PROCEDURES"

Our Abpromise to you: Quality guaranteed and expert technical support

- Replacement or refund for products not performing as stated on the datasheet
- Valid for 12 months from date of delivery
- Response to your inquiry within 24 hours
- We provide support in Chinese, English, French, German, Japanese and Spanish
- Extensive multi-media technical resources to help you
- We investigate all quality concerns to ensure our products perform to the highest standards

If the product does not perform as described on this datasheet, we will offer a refund or replacement. For full details of the Abpromise, please visit <https://www.abcam.co.jp/abpromise> or contact our technical team.

Terms and conditions

- Guarantee only valid for products bought direct from Abcam or one of our authorized distributors