

## Mouse VCAM1 ELISA Kit (CD106) ab201278

リコンビナント SimpleStep ELISA

### 6 References [画像数 7](#)

#### 製品の概要

製品名 Mouse VCAM1 ELISA Kit (CD106)

検出方法 Colorimetric

再現性 Intra-Assay (同時再現性)

サンプル	N	平均値	SD	CV%
Overall	8			4.3%

Inter-Assay (日差再現性)

サンプル	N	平均値	SD	CV%
Overall	3			5.6%

サンプルの種類 Cell culture supernatant, Serum, Cell culture extracts, Tissue Extracts, Hep Plasma, EDTA Plasma, Cit plasma

アッセイタイプ Sandwich (quantitative)

検出感度 5.59 pg/ml

検出範囲 46.9 pg/ml - 3000 pg/ml

添加回収試験 特定サンプルでの回収試験

サンプルの種類	平均 %	測定範囲
Serum	107	104% - 109%
Cell culture media	87	86% - 88%
Hep Plasma	108	107% - 108%
EDTA Plasma	109	106% - 111%
Cit plasma	111	109% - 113%

全工程の試験時間 1h 30m

**ステップ** One step assay

**種交差性** **交差種:** Mouse  
**非交差種:** Goat, Cow, Pig

**製品の概要** Mouse VCAM1 ELISA Kit (CD106) (ab201278) is a single-wash 90 min sandwich ELISA designed for the quantitative measurement of VCAM1 (CD106) protein in cell culture extracts, cell culture supernatant, cit plasma, edta plasma, hep plasma, serum, and tissue extracts. It uses our proprietary SimpleStep ELISA® technology. Quantitate Mouse VCAM1 (CD106) with 5.59 pg/ml sensitivity.

SimpleStep ELISA® technology employs capture antibodies conjugated to an affinity tag that is recognized by the monoclonal antibody used to coat our SimpleStep ELISA® plates. This approach to sandwich ELISA allows the formation of the antibody-analyte sandwich complex in a single step, significantly reducing assay time. See the SimpleStep ELISA® protocol summary in the image section for further details. Our SimpleStep ELISA® technology provides several benefits:

- Single-wash protocol reduces assay time to 90 minutes or less
- High sensitivity, specificity and reproducibility from superior antibodies
- Fully validated in biological samples
- 96-wells plate breakable into 12 x 8 wells strips

A 384-well SimpleStep ELISA® microplate (**ab203359**) is available to use as an alternative to the 96-well microplate provided with SimpleStep ELISA® kits.

**特記事項** VCAM1 is important in cell-cell recognition, and appears to function in leukocyte-endothelial cell adhesion. It interacts with integrin alpha-4/beta-1 (ITGA4/ITGB1) on leukocytes, and mediates both adhesion and signal transduction. The VCAM1/ITGA4/ITGB1 interaction may play a pathophysiologic role both in immune responses and in leukocyte emigration to sites of inflammation.

Abcam has not and does not intend to apply for the REACH Authorisation of customers' uses of products that contain European Authorisation list (Annex XIV) substances. It is the responsibility of our customers to check the necessity of application of REACH Authorisation, and any other relevant authorisations, for their intended uses.

**試験プラットフォーム** Microplate (12 x 8 well strips)

## 製品の特性

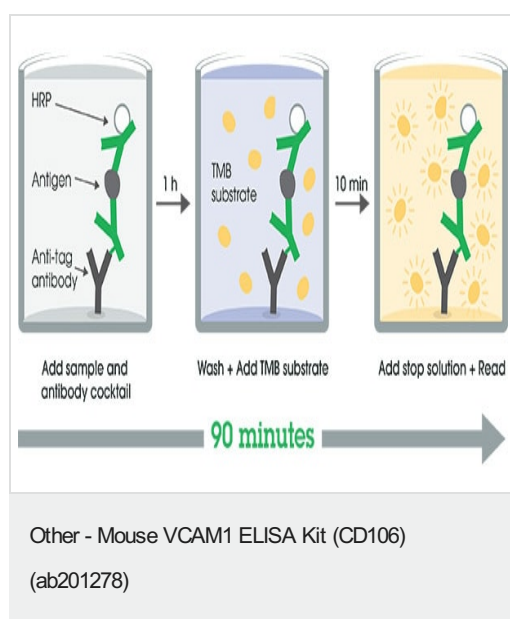
**保存方法** Store at +4°C. Please refer to protocols.

内容	1 x 96 tests
10X Mouse VCAM1 (CD106) Capture Antibody	1 x 600µl
10X Mouse VCAM1 (CD106) Detector Antibody	1 x 600µl
10X Wash Buffer PT (ab206977)	1 x 20ml
50X Cell Extraction Enhancer Solution (ab193971)	1 x 1ml

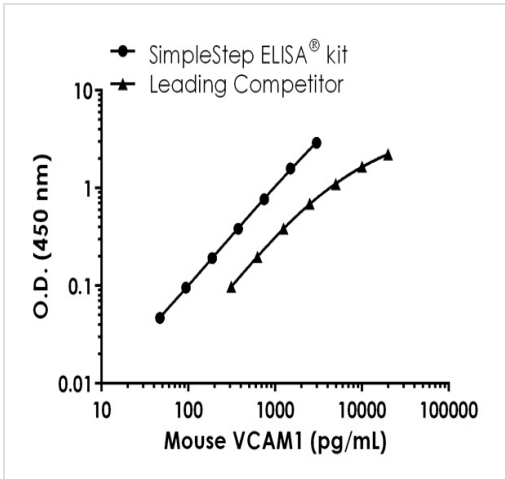
内容	1 x 96 tests
5X Cell Extraction Buffer PTR (ab193970)	1 x 10ml
Antibody Diluent CP	1 x 6ml
Mouse VCAM1 (CD106) Lyophilized Recombinant Protein	2 vials
Plate Seals	1 unit
Sample Diluent NS (ab193972)	1 x 50ml
SimpleStep Pre-Coated 96-Well Microplate (ab206978)	1 unit
Stop Solution	1 x 12ml
TMB Development Solution	1 x 12ml

<b>機能</b>	Important in cell-cell recognition. Appears to function in leukocyte-endothelial cell adhesion. Interacts with the beta-1 integrin VLA4 on leukocytes, and mediates both adhesion and signal transduction. The VCAM1/VLA4 interaction may play a pathophysiologic role both in immune responses and in leukocyte emigration to sites of inflammation.
<b>組織特異性</b>	Expressed on inflamed vascular endothelium, as well as on macrophage-like and dendritic cell types in both normal and inflamed tissue.
<b>配列類似性</b>	Contains 7 Ig-like C2-type (immunoglobulin-like) domains.
<b>ドメイン</b>	Either the first or the fourth Ig-like C2-type domain is required for VLA4-dependent cell adhesion.
<b>翻訳後修飾</b>	Sialoglycoprotein.
<b>細胞内局在</b>	Membrane.

## 画像

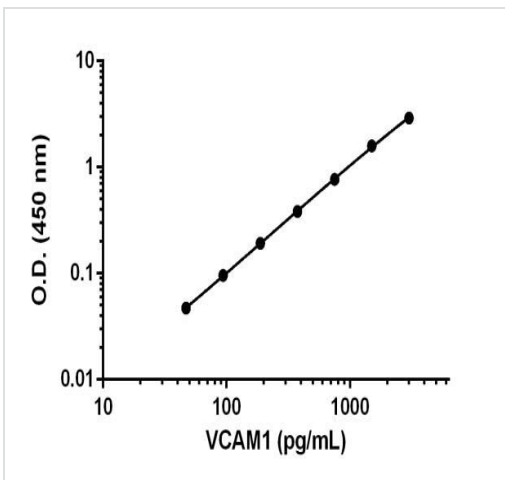


SimpleStep ELISA technology allows the formation of the antibody-antigen complex in one single step, reducing assay time to 90 minutes. Add samples or standards and antibody mix to wells all at once, incubate, wash, and add your final substrate. See protocol for a detailed step-by-step guide.



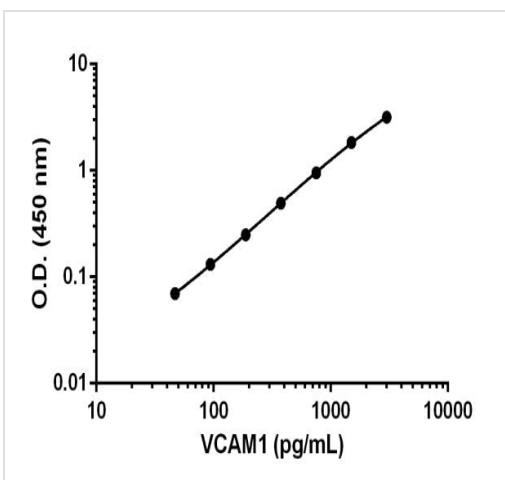
Standard curve comparison between mouse VCAM1 (CD106) SimpleStep ELISA<sup>®</sup> kit and traditional ELISA kit from leading competitor. SimpleStep ELISA kit shows a 9-fold increase in sensitivity.

Mouse VCAM1 (CD106) standard curve comparison data.



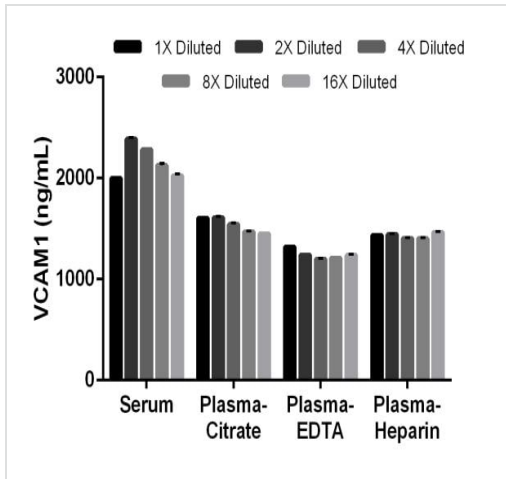
Background-subtracted data values (mean +/- SD) are graphed.

Example of VCAM1 standard curve in Sample Diluent NS.



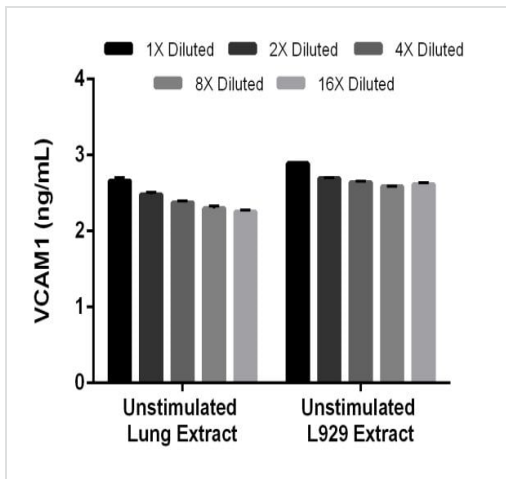
Background-subtracted data values (mean +/- SD) are graphed.

Example of VCAM1 standard curve in 1X Cell Extraction Buffer PTR.



The 1X dilution was 0.2% for each biological. Interpolated data values (mean +/- SD, n = 2) are graphed.

Titration of mouse serum, citrate plasma, EDTA plasma, and Heparin plasma within the working range of the assay.



The 1X dilution was an extract load of 250 µg/mL. Interpolated data values (mean +/- SD, n = 2) are graphed.

Titration of mouse unstimulated (-) Lung and L929 extracts within the working range of the assay.

Powered by  
recombinant antibodies



**Research with confidence**  
Consistent and reproducible results



**Long-term and scalable supply**  
Recombinant technology



**Success from the first experiment**  
Confirmed specificity



**Ethical standards compliant**  
Animal-free production

Sandwich ELISA - Mouse VCAM1 ELISA Kit  
(CD106) (ab201278)

To learn more about the advantages of recombinant antibodies see [here](#).

**Please note:** All products are "FOR RESEARCH USE ONLY. NOT FOR USE IN DIAGNOSTIC PROCEDURES"

### Our Abpromise to you: Quality guaranteed and expert technical support

---

- Replacement or refund for products not performing as stated on the datasheet
- Valid for 12 months from date of delivery
- Response to your inquiry within 24 hours
  
- We provide support in Chinese, English, French, German, Japanese and Spanish
- Extensive multi-media technical resources to help you
- We investigate all quality concerns to ensure our products perform to the highest standards

If the product does not perform as described on this datasheet, we will offer a refund or replacement. For full details of the Abpromise, please visit <https://www.abcam.co.jp/abpromise> or contact our technical team.

### Terms and conditions

---

- Guarantee only valid for products bought direct from Abcam or one of our authorized distributors