

Mouse SDF1 ELISA Kit ab100741

★★★★★ 2 Abreviews 11 References 画像数 4

製品の概要

製品名	Mouse SDF1 ELISA Kit
検出方法	Colorimetric
サンプルの種類	Cell culture supernatant, Serum, Plasma
アッセイタイプ	Sandwich (quantitative)
検出感度	< 3 pg/ml
検出範囲	9.38 pg/ml - 600 pg/ml
添加回収試験	99 %

特定サンプルでの回収試験

サンプルの種類	平均 %	測定範囲
Cell culture supernatant	99.34	89% - 107%
Serum	99	91% - 107%
Plasma	100.36	90% - 107%

ステップ Multiple steps standard assay

種交差性 交差種: Mouse

製品の概要 Mouse SDF1 ELISA (Enzyme-Linked Immunosorbent Assay) kit (ab100741) is an *in vitro* enzyme-linked immunosorbent assay for the quantitative measurement of mouse SDF1 in serum, plasma and cell culture supernatants. (Mouse SDF1 concentration is pretty low in normal serum/plasma, it may not be detected in this assay).

This assay employs an antibody specific for mouse SDF1 coated on a 96-well plate. Standards and samples are pipetted into the wells and SDF1 present in a sample is bound to the wells by the immobilized antibody. The wells are washed and biotinylated anti-mouse SDF1 antibody is added. After washing away unbound biotinylated antibody, HRP-conjugated streptavidin is pipetted to the wells. The wells are again washed, a TMB substrate solution is added to the wells and color develops in proportion to the amount of SDF1 bound. The Stop Solution changes the color from blue to yellow, and the intensity of the color is measured at 450 nm.

試験プラットフォーム Microplate

製品の特性

保存方法

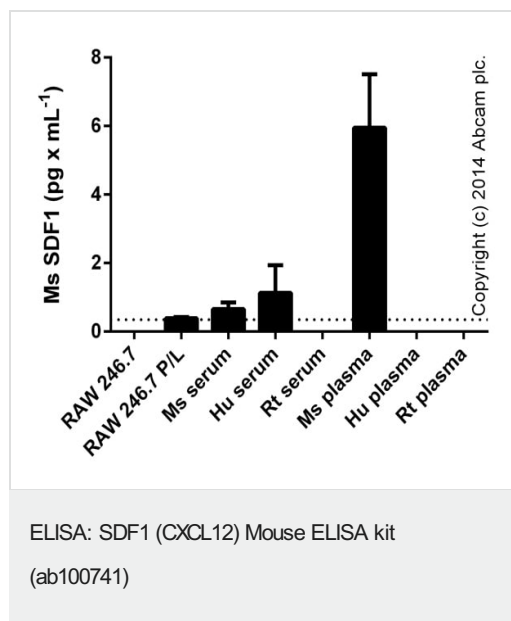
Store at -20°C. Please refer to protocols.

内容	1 x 96 tests
200X HRP-Streptavidin Concentrate	1 x 200µl
20X Wash Buffer	1 x 25ml
5X Assay Diluent B	1 x 15ml
Assay Diluent A	1 x 30ml
Biotinylated anti-Mouse SDF1	2 vials
Recombinant Mouse SDF1 Standard (lyophilized)	2 vials
SDF1 Microplate (12 strips x 8 wells)	1 unit
Stop Solution	1 x 8ml
TMB One-Step Substrate Reagent	1 x 12ml

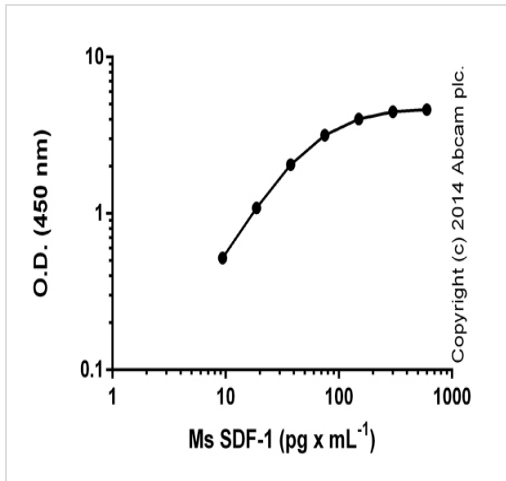
関連性

SDF1 alpha and 1 beta are small cytokines that belong to the intercrine family, members of which activate leukocytes and are often induced by proinflammatory stimuli such as lipopolysaccharide, TNF or IL1. SDF1 alpha has been shown to be chemotactic for lymphocytes and is recently reported to be a ligand for CXCR4 (LESTR/fusin), a co-receptor for HIV1 entry into T cells. SDF-1 binding to CXCR4 inhibits HIV1 entry.

画像

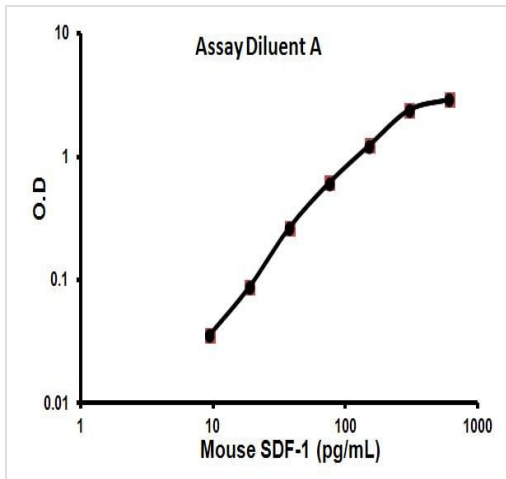


SDF1 measured in culture supernatants from control or activated cells (P/L), stimulated for 24 hours with 50 ng x mL⁻¹ of PMA ([ab120297](#)) with the addition of 1 ug x mL⁻¹ of LPS (Sigma) for the last 6 hours, and in biological fluids (duplicates +/- SD). All samples tested undiluted.



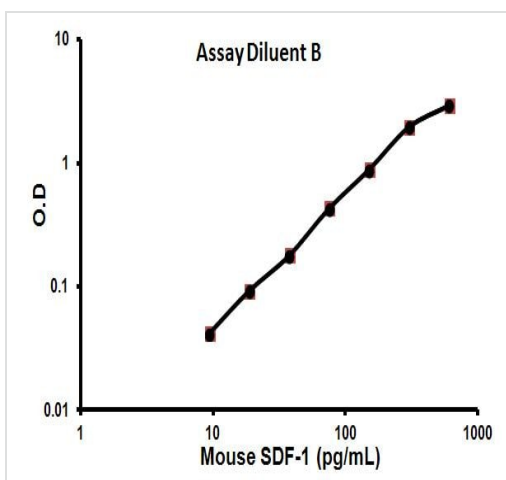
Standard curve with background signal subtracted (duplicates; +/- SD).

ELISA: SDF1 (CXCL12) Mouse ELISA kit
(ab100741)



Representative Standard Curve using ab100741

Representation of a standard curve



Representative Standard Curve using ab100741

Representative of a standard curve

Please note: All products are "FOR RESEARCH USE ONLY. NOT FOR USE IN DIAGNOSTIC PROCEDURES"

Our Abpromise to you: Quality guaranteed and expert technical support

- Replacement or refund for products not performing as stated on the datasheet
- Valid for 12 months from date of delivery
- Response to your inquiry within 24 hours
- We provide support in Chinese, English, French, German, Japanese and Spanish
- Extensive multi-media technical resources to help you
- We investigate all quality concerns to ensure our products perform to the highest standards

If the product does not perform as described on this datasheet, we will offer a refund or replacement. For full details of the Abpromise, please visit <https://www.abcam.co.jp/abpromise> or contact our technical team.

Terms and conditions

- Guarantee only valid for products bought direct from Abcam or one of our authorized distributors