

Mouse PD1 ELISA Kit ab210971

リコンビナント SimpleStep ELISA®

1 References 画像数 7

製品の概要

製品名	Mouse PD1 ELISA Kit
検出方法	Colorimetric
再現性	Intra-Assay (同時再現性)

サンプル	N	平均値	SD	CV%
EL-4 ext	5			4%

サンプル	N	平均値	SD	CV%
EL-4 ext	3			7%

サンプルの種類	Cell culture supernatant, Cell culture extracts, Tissue Extracts
アッセイタイプ	Sandwich (quantitative)
検出感度	21 pg/ml
検出範囲	125 pg/ml - 8000 pg/ml
添加回収試験	特定サンプルでの回収試験

サンプルの種類	平均 %	測定範囲
Cell culture supernatant	100	93% - 104%
Cell culture extracts	109	100% - 115%

全工程の試験時間	1h 30m
ステップ	One step assay
種交差性	交差種: Mouse

製品の概要

Mouse PD1 ELISA Kit (ab210971) is a single-wash 90 min sandwich ELISA designed for the quantitative measurement of PD1 protein in cell culture extracts, cell culture supernatant, and tissue extracts. It uses our proprietary SimpleStep ELISA® technology. Quantitate Mouse PD1 with 21 pg/ml sensitivity.

SimpleStep ELISA® technology employs capture antibodies conjugated to an affinity tag that is recognized by the monoclonal antibody used to coat our SimpleStep ELISA® plates. This approach to sandwich ELISA allows the formation of the antibody-analyte sandwich complex in a single step, significantly reducing assay time. See the SimpleStep ELISA® protocol summary in the image section for further details. Our SimpleStep ELISA® technology provides several benefits:

- Single-wash protocol reduces assay time to 90 minutes or less
- High sensitivity, specificity and reproducibility from superior antibodies
- Fully validated in biological samples
- 96-wells plate breakable into 12 x 8 wells strips

A 384-well SimpleStep ELISA® microplate (**ab203359**) is available to use as an alternative to the 96-well microplate provided with SimpleStep ELISA® kits.

特記事項

PD1 is a single-pass type I cell membrane glycoprotein. It is a receptor for PD-1L and/or PD-L2 ligands. PD1 is involved in the regulation of T-cell function during immunity and tolerance. PD-1 interactions with its ligands PD-L1 and/or PD-L2 provides a negative regulatory signal to CD4 and CD8 T cells that results ultimately in a phenotype termed T cell exhaustion. Possible cell death inducer, in association with other factors.

Abcam has not and does not intend to apply for the REACH Authorisation of customers' uses of products that contain European Authorisation list (Annex XIV) substances.

It is the responsibility of our customers to check the necessity of application of REACH Authorisation, and any other relevant authorisations, for their intended uses.

試験プラットフォーム

Pre-coated microplate (12 x 8 well strips)

製品の特徴

保存方法

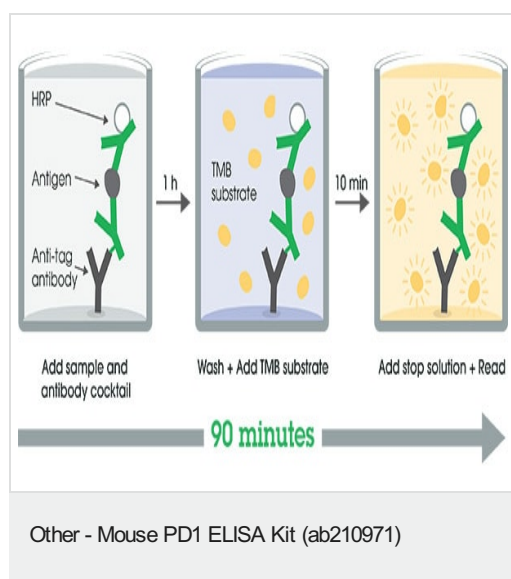
Store at +4°C. Please refer to protocols.

内容	1 x 96 tests
10X Mouse PD-1 Capture Antibody	1 x 600µl
10X Mouse PD-1 Detector Antibody	1 x 600µl
10X Wash Buffer PT (ab206977)	1 x 20ml
50X Cell Extraction Enhancer Solution (ab193971)	1 x 1ml
5X Cell Extraction Buffer PTR (ab193970)	1 x 10ml
Antibody Diluent CPR	1 x 6ml
Denaturant	1 x 500µl
Mouse PD-1 Lyophilized Recombinant Protein	2 vials
Plate Seals	1 unit

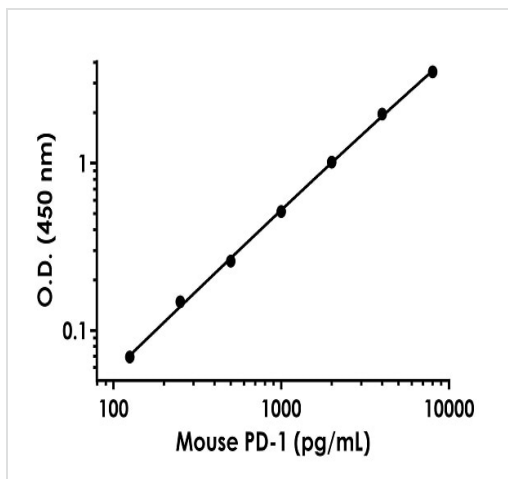
内容	1 x 96 tests
Sample Diluent NS (ab193972)	1 x 50ml
SimpleStep Pre-Coated 96-Well Microplate (ab206978)	1 unit
Stop Solution	1 x 12ml
TMB Development Solution	1 x 12ml

機能	Possible cell death inducer, in association with other factors.
関連疾患	Genetic variation in PDCD1 is associated with susceptibility to systemic lupus erythematosus type 2 (SLEB2) [MIM:605218]. Systemic lupus erythematosus is a chronic, inflammatory and often febrile multisystemic disorder of connective tissue. It affects principally the skin, joints, kidneys and serosal membranes. It is thought to represent a failure of the regulatory mechanisms of the autoimmune system.
配列類似性	Contains 1 Ig-like V-type (immunoglobulin-like) domain.
発生段階	Induced at programmed cell death.
細胞内局在	Membrane.

画像

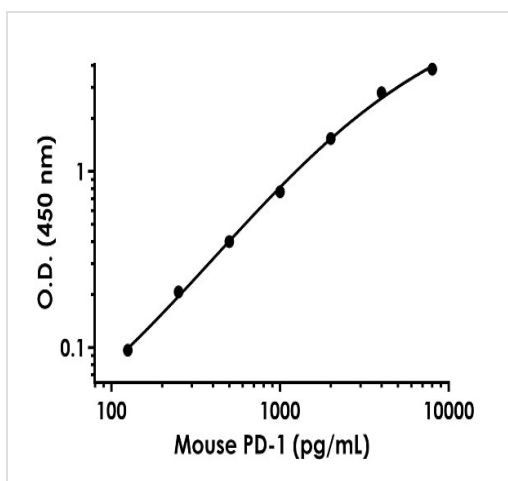


SimpleStep ELISA technology allows the formation of the antibody-antigen complex in one single step, reducing assay time to 90 minutes. Add samples or standards and antibody mix to wells all at once, incubate, wash, and add your final substrate. See protocol for a detailed step-by-step guide.



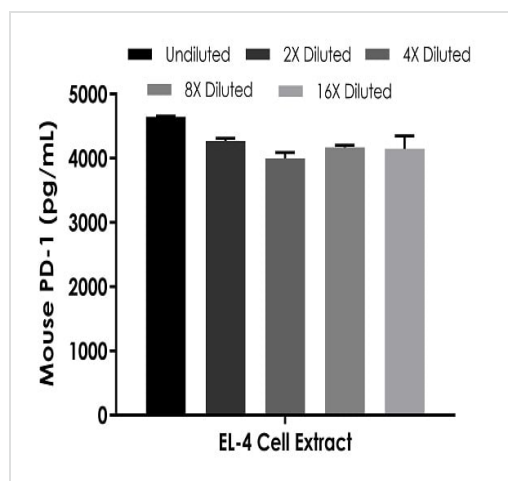
Background-subtracted data values (mean +/- SD) are graphed.

Example of mouse PD1 standard curve 1X Cell
Extraction Buffer PTR+Enhancer.



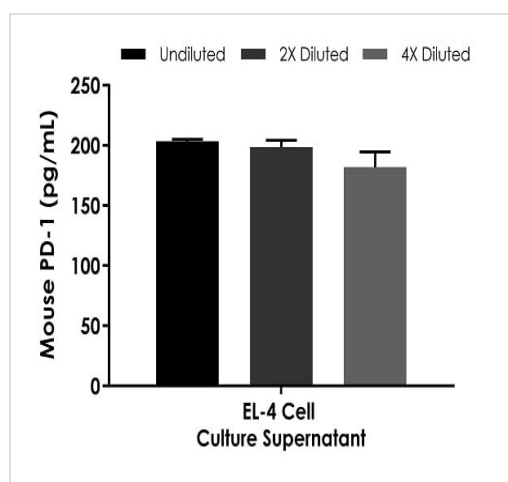
Background-subtracted data values (mean +/- SD) are graphed.

Example of mouse PD1 standard curve in Sample
Diluent NS.



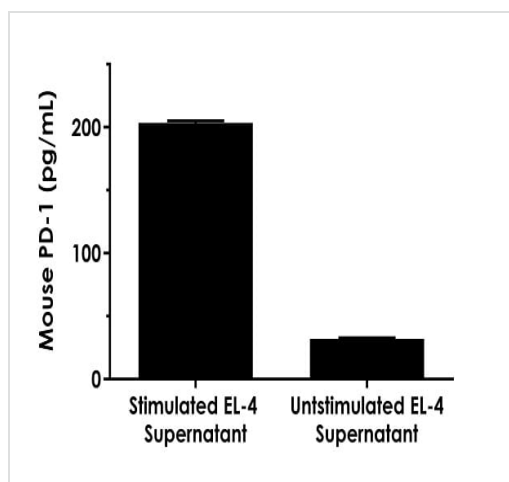
Interpolated concentrations of native PD1 in mouse EL-4 cell extract samples based on a 90 µg/mL extract load.

The concentrations of PD1 were measured in duplicate and interpolated from the PD1 standard curve and corrected for sample dilution. The interpolated dilution factor corrected values are plotted (mean \pm SD, n=2). The mean PD1 concentration was determined to be 4,246 pg/mL in EL-4 cell extract.



Interpolated concentrations of native PD1 in PHA/PMA treated Day 2 EL-4 cell culture supernatant samples.

The concentrations of PD1 were measured in duplicates, interpolated from the PD1 standard curves and corrected for sample dilution. Undiluted samples are as follows: EL-4 cell culture supernatant 100%. Dilutions beyond 4 fold were not analyzed due to O.D. values below the O.D. values of the MDD. The interpolated dilution factor corrected values are plotted (mean \pm SD, n=2). The mean PD1 concentration was determined to be 195 pg/mL in EL-4 cell culture supernatant samples.



Comparison of PD1 in unstimulated and PHA/PMA (1.5% and 10ng/mL respectively) stimulated EL-4 supernatant.

EL-4 cells were grown in the absence or presence of PHA/PMA for 48 hours. The concentrations of PD1 were measured in neat supernatant samples in duplicates and interpolated from the PD1 standard curve. The interpolated values are plotted (mean \pm SD, $n=2$). The mean PD1 concentration was determined to be 32 pg/mL in unstimulated, 203 pg/ml in PHA/PMA stimulated supernatants and undetectable in media (not shown).

Powered by
recombinant antibodies

Research with confidence
Consistent and reproducible results

Long-term and scalable supply
Recombinant technology

Success from the first experiment
Confirmed specificity

Ethical standards compliant
Animal-free production

Sandwich ELISA - Mouse PD1 ELISA Kit
(ab210971)

To learn more about the advantages of recombinant antibodies see [here](#).

Please note: All products are "FOR RESEARCH USE ONLY. NOT FOR USE IN DIAGNOSTIC PROCEDURES"

Our Promise to you: Quality guaranteed and expert technical support

- Replacement or refund for products not performing as stated on the datasheet
- Valid for 12 months from date of delivery

- Response to your inquiry within 24 hours
- We provide support in Chinese, English, French, German, Japanese and Spanish
- Extensive multi-media technical resources to help you
- We investigate all quality concerns to ensure our products perform to the highest standards

If the product does not perform as described on this datasheet, we will offer a refund or replacement. For full details of the Abpromise, please visit <https://www.abcam.co.jp/abpromise> or contact our technical team.

Terms and conditions

- Guarantee only valid for products bought direct from Abcam or one of our authorized distributors