

Mouse MMP8 ELISA Kit ab206982

リコンビナント SimpleStep ELISA

3 References 画像数 5

製品の概要

製品名 Mouse MMP8 ELISA Kit

検出方法 Colorimetric

再現性 Intra-Assay (同時再現性)

サンプル	N	平均値	SD	CV%
Serum	5			4.9%

Inter-Assay (日差再現性)

サンプル	N	平均値	SD	CV%
Serum	3			4.5%

サンプルの種類 Cell culture supernatant, Serum, Hep Plasma, EDTA Plasma, Cit plasma

アッセイタイプ Sandwich (quantitative)

検出感度 53 pg/ml

検出範囲 62.5 pg/ml - 4000 pg/ml

添加回収試験 特定サンプルでの回収試験

サンプルの種類	平均 %	測定範囲
Serum	111	108% - 119%
Cell culture media	100	98% - 105%
Hep Plasma	100	95% - 103%
EDTA Plasma	104	97% - 112%
Cit plasma	108	105% - 113%

全工程の試験時間 1h 30m

ステップ One step assay

## 種交差性

交差種: Mouse

## 製品の概要

Mouse MMP8 ELISA Kit (ab206982) is a single-wash 90 min sandwich ELISA designed for the quantitative measurement of MMP8 protein in cell culture supernatant, serum, cit plasma, edta plasma, and hep plasma. It uses our proprietary SimpleStep ELISA® technology. Quantitate Mouse MMP8 with 53 pg/ml sensitivity.

SimpleStep ELISA® technology employs capture antibodies conjugated to an affinity tag that is recognized by the monoclonal antibody used to coat our SimpleStep ELISA® plates. This approach to sandwich ELISA allows the formation of the antibody-analyte sandwich complex in a single step, significantly reducing assay time. See the SimpleStep ELISA® protocol summary in the image section for further details. Our SimpleStep ELISA® technology provides several benefits:

- Single-wash protocol reduces assay time to 90 minutes or less
- High sensitivity, specificity and reproducibility from superior antibodies
- Fully validated in biological samples
- 96-wells plate breakable into 12 x 8 wells strips

A 384-well SimpleStep ELISA® microplate ([ab203359](#)) is available to use as an alternative to the 96-well microplate provided with SimpleStep ELISA® kits.

## 特記事項

MMP8 is a member of the matrix metalloproteinase family of zinc proteases that degrade extracellular matrix. MMP8 is expressed in neutrophils and is also known as neutrophil collagenase. MMP8 is expressed as a propeptide. This antibodies in this assay were raised to the mature portion of MMP8.

Abcam has not and does not intend to apply for the REACH Authorisation of customers' uses of products that contain European Authorisation list (Annex XIV) substances.

It is the responsibility of our customers to check the necessity of application of REACH Authorisation, and any other relevant authorisations, for their intended uses.

## 試験プラットフォーム

Microplate (12 x 8 well strips)

## 製品の特性

## 保存方法

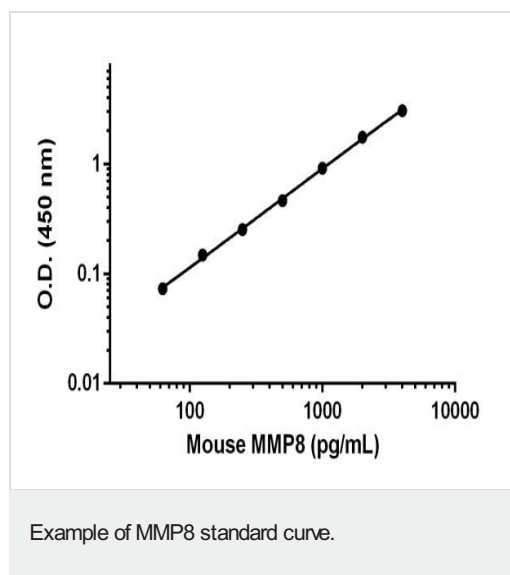
Store at +4°C. Please refer to protocols.

内容	1 x 96 tests
10X Mouse MMP8 Capture Antibody	1 x 600µl
10X Mouse MMP8 Detector Antibody	1 x 600µl
10X Wash Buffer PT (ab206977)	1 x 20ml
50X Cell Extraction Enhancer Solution (ab193971)	1 x 1ml
5X Cell Extraction Buffer PTR (ab193970)	1 x 10ml
Antibody Diluent CPR	1 x 6ml

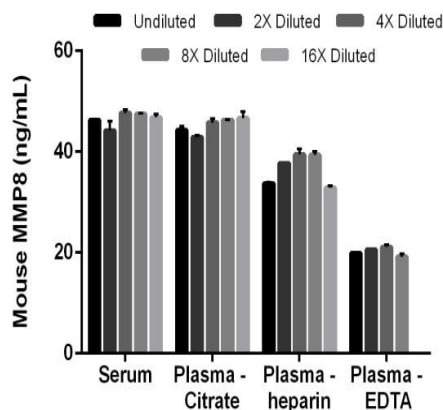
内容	1 x 96 tests
Mouse MMP8 Lyophilized Recombinant Protein	2 vials
Plate Seals	1 unit
Sample Diluent NS (ab193972)	1 x 50ml
SimpleStep Pre-Coated 96-Well Microplate (ab206978)	1 unit
Stop Solution	1 x 12ml
TMB Development Solution	1 x 12ml

機能	Can degrade fibrillar type I, II, and III collagens.
組織特異性	Neutrophils.
配列類似性	Belongs to the peptidase M10A family. Contains 4 hemopexin-like domains.
ドメイン	The conserved cysteine present in the cysteine-switch motif binds the catalytic zinc ion, thus inhibiting the enzyme. The dissociation of the cysteine from the zinc ion upon the activation-peptide release activates the enzyme.
細胞内局在	Cytoplasmic granule. Secreted > extracellular space > extracellular matrix. Stored in intracellular granules.

## 画像

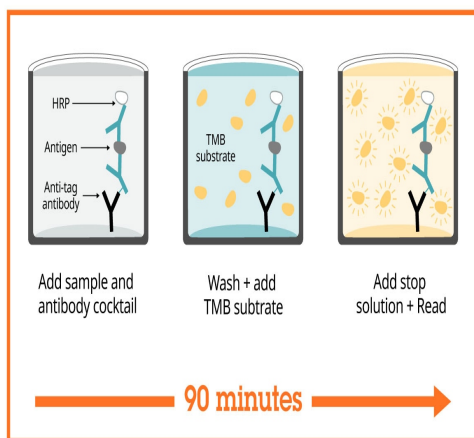


Background-subtracted data values (mean +/- SD) are graphed.



Interpolated concentrations of MMP8 in mouse serum, plasma (citrate), plasma (heparin) and plasma (EDTA).

The concentrations of MMP8 were measured in duplicate and interpolated from the MMP8 standard curve and corrected for sample dilution. The interpolated dilution factor corrected values are plotted (mean  $\pm$  SD, n=2). The mean MMP8 concentration was determined to be 46.5 ng/mL in mouse serum, 45.2 ng/mL in mouse plasma (Citrate), 36.6 ng/mL in mouse plasma (heparin), and 20.2 ng/mL in mouse plasma (EDTA).



Sandwich ELISA - Mouse MMP8 ELISA Kit  
(ab206982)

SimpleStep ELISA technology allows the formation of the antibody-antigen complex in one single step, reducing assay time to 90 minutes. Add samples or standards and antibody mix to wells all at once, incubate, wash, and add your final substrate. See protocol for a detailed step-by-step guide.

Powered by  
recombinant antibodies



**Research with confidence**  
Consistent and reproducible results



**Long-term and scalable supply**  
Recombinant technology



**Success from the first experiment**  
Confirmed specificity



**Ethical standards compliant**  
Animal-free production

Sandwich ELISA - Mouse MMP8 ELISA Kit  
(ab206982)

To learn more about the advantages of recombinant antibodies see [here](#).

**Get more done with  
SimpleStep ELISA**



**Easy to use**  
Single-wash 90-minute protocol



**Flexible**  
Matched antibody pairs available



**Precision antibodies**  
High sensitivity, specificity and reproducibility



**Scalable**  
Now in 10-pack and 384-well formats

Sandwich ELISA - Mouse MMP8 ELISA Kit  
(ab206982)

To learn more about the advantages of SimpleStep ELISA<sup>®</sup> kits see [here](#).

**Please note:** All products are "FOR RESEARCH USE ONLY. NOT FOR USE IN DIAGNOSTIC PROCEDURES"

### Our Abpromise to you: Quality guaranteed and expert technical support

- Replacement or refund for products not performing as stated on the datasheet
- Valid for 12 months from date of delivery

- Response to your inquiry within 24 hours
- We provide support in Chinese, English, French, German, Japanese and Spanish
- Extensive multi-media technical resources to help you
- We investigate all quality concerns to ensure our products perform to the highest standards

If the product does not perform as described on this datasheet, we will offer a refund or replacement. For full details of the Abpromise, please visit <https://www.abcam.co.jp/abpromise> or contact our technical team.

#### **Terms and conditions**

---

- Guarantee only valid for products bought direct from Abcam or one of our authorized distributors