

Mouse Lipocalin-2 ELISA Kit (NGAL) ab119601

[10 References](#) [画像数 4](#)

製品の概要

製品名 Mouse Lipocalin-2 ELISA Kit (NGAL)

検出方法 Colorimetric

再現性 Intra-Assay (同時再現性)

サンプル	N	平均値	SD	CV%
1	16	141pg/ml	6.2	= 4.4%
2	16	785pg/ml	38.46	= 4.9%
3	16	2588pg/ml	113.87	= 4.4%

Inter-Assay (日差再現性)

サンプル	N	平均値	SD	CV%
1	24	130pg/ml	7.54	= 5.8%
2	24	817pg/ml	54.73	= 6.7%
3	24	2606pg/ml	161.57	= 6.2%

サンプルの種類 Cell culture supernatant, Urine, Serum, Hep Plasma, EDTA Plasma

アッセイタイプ Sandwich (quantitative)

検出感度 < 10 pg/ml

検出範囲 78 pg/ml - 5000 pg/ml

ステップ Multiple steps standard assay

種交差性 交差種: Mouse

製品の概要 Abcam's mouse Lipocalin-2 (NGAL) *in vitro* ELISA (Enzyme-Linked Immunosorbent Assay) kit is designed for the accurate quantitative measurement of mouse Lipocalin-2 in cell culture supernatants, serum, plasma (heparin, EDTA) and urine. (Genecards: Lcn2)

A Lipocalin-2 specific rat monoclonal antibody has been precoated onto 96-well plates. Standards and test samples are added to the wells and incubated. A biotinylated detection

polyclonal antibody from goat specific for Lipocalin-2 is then added followed by washing with PBS or TBS buffer. Avidin-Biotin-Peroxidase Complex is added and unbound conjugates are washed away with PBS or TBS buffer. TMB is then used to visualize the HRP enzymatic reaction. TMB is catalyzed by HRP to produce a blue color product that changes into yellow after adding acidic stop solution. The density of yellow coloration is directly proportional to the mouse Lipocalin-2 amount of sample captured in plate.

Get higher sensitivity in only 90 minutes with Mouse Lipocalin-2 ELISA Kit (NGAL) ([ab199083](#)) from our SimpleStep ELISA® range.

試験プラットフォーム

Microplate

製品の特徴

保存方法

Store at -20°C. Please refer to protocols.

内容	ラベル	1 x 96 tests	1 x 96 tests
ABC Diluent Buffer	Blue Cap	1 x 12ml	1 x 12ml
Antibody Diluent Buffer	Green Cap	1 x 12ml	1 x 12ml
Anti-mouse Lipocalin-2 antibody Microplate (12 x 8 wells)		1 unit	1 unit
Avidin-Biotin-Peroxidase Complex (ABC)		1 x 100µl	1 x 100µl
Biotinylated anti-mouse Lipocalin-2 antibody		1 x 100µl	1 x 100µl
Lyophilized recombinant mouse Lipocalin-2 standard		2 x 10ng	2 x 10ng
Plate Seal		4 units	4 units
Sample Diluent Buffer	Green Cap	1 x 30ml	1 x 30ml
TMB Color Developing Agent	Amber Bottle	1 x 10ml	1 x 10ml
TMB Stop Solution	Yellow Cap	1 x 10ml	1 x 10ml
Wash Buffer (25X)		1 x 20ml	1 x 20ml

機能

Iron-trafficking protein involved in multiple processes such as apoptosis, innate immunity and renal development. Binds iron through association with 2,5-dihydroxybenzoic acid (2,5-DHBA), a siderophore that shares structural similarities with bacterial enterobactin, and delivers or removes iron from the cell, depending on the context. Iron-bound form (holo-24p3) is internalized following binding to the SLC22A17 (24p3R) receptor, leading to release of iron and subsequent increase of intracellular iron concentration. In contrast, association of the iron-free form (apo-24p3) with the SLC22A17 (24p3R) receptor is followed by association with an intracellular siderophore, iron chelation and iron transfer to the extracellular medium, thereby reducing intracellular iron concentration. Involved in apoptosis due to interleukin-3 (IL3) deprivation: iron-loaded form increases intracellular iron concentration without promoting apoptosis, while iron-free form decreases intracellular iron levels, inducing expression of the proapoptotic protein BCL2L11/BIM, resulting in apoptosis. Involved in innate immunity, possibly by sequestering iron, leading to limit

bacterial growth.

組織特異性

Expressed in bone marrow and in tissues that are prone to exposure to microorganism. High expression is found in bone marrow as well as in uterus, prostate, salivary gland, stomach, appendix, colon, trachea and lung. Not found in the small intestine or peripheral blood leukocytes.

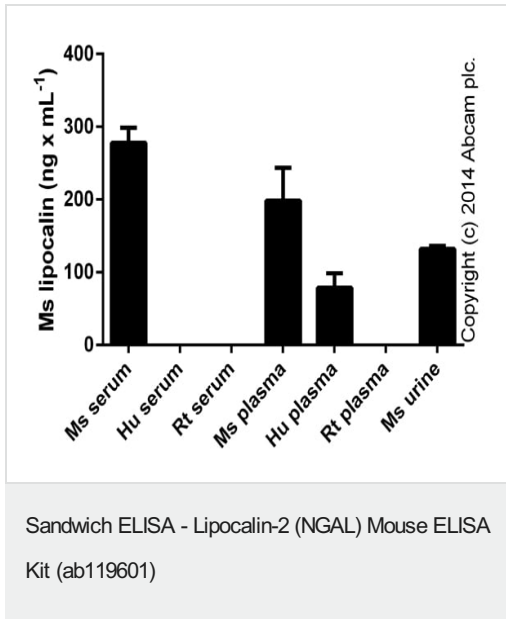
配列類似性

Belongs to the calycin superfamily. Lipocalin family.

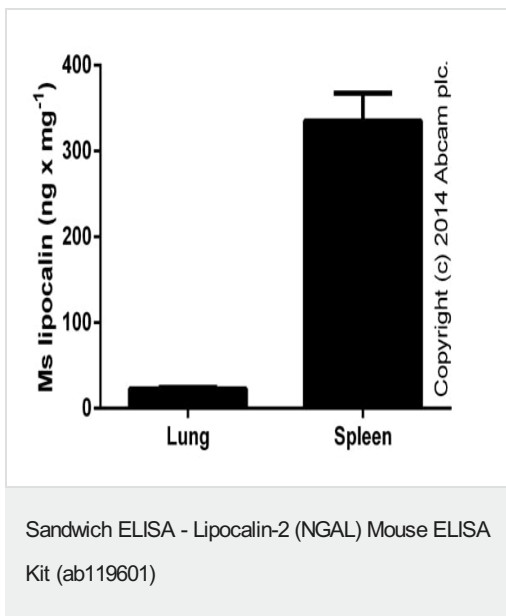
細胞内局在

Secreted. Upon binding to the SLC22A17 (24p3R) receptor, it is internalized.

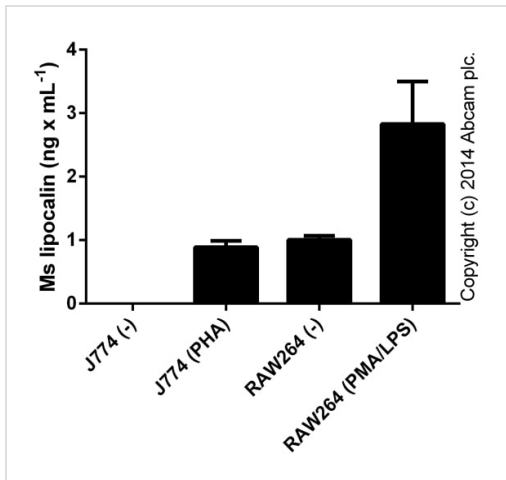
画像



Lipocalin-2 measured in biological fluids (dilution range 1/50-1/500; duplicates +/- SD).

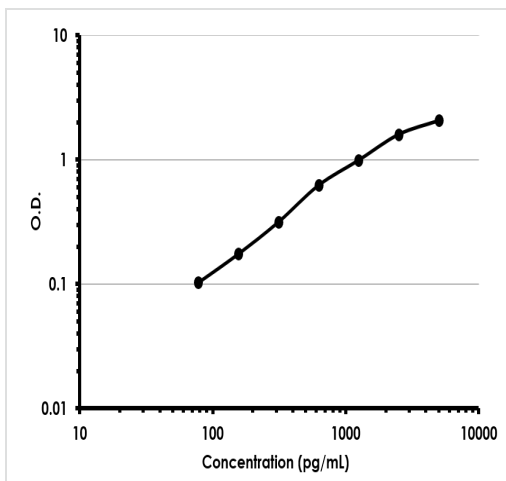


Mouse lipocalin-2 measured in tissue lysates (10-50 ug protein per mL tested; presented as NGAL per mg of extracted protein; duplicates +/- SD).



Lipocalin-2 measured in culture supernatants (dilution range 1/1-1/25) from control (-) or activated J774 cells ((PHA) 48 hours with 2% PHA-M; LifeTechnologies) and from RAW264 cells stimulated for 24 hours with 50 ng x mL⁻¹ of PMA ([ab120297](#)) with the addition of 1 ug x mL⁻¹ of LPS (Sigma) for the last 6 hours (PMA/LPS) (duplicates +/- SD).

Sandwich ELISA - Lipocalin-2 (NGAL) Mouse ELISA Kit (ab119601)



Representative Standard Curve using ab119601.

Typical Standard Curve

Please note: All products are "FOR RESEARCH USE ONLY. NOT FOR USE IN DIAGNOSTIC PROCEDURES"

Our Promise to you: Quality guaranteed and expert technical support

- Replacement or refund for products not performing as stated on the datasheet
- Valid for 12 months from date of delivery
- Response to your inquiry within 24 hours
- We provide support in Chinese, English, French, German, Japanese and Spanish
- Extensive multi-media technical resources to help you
- We investigate all quality concerns to ensure our products perform to the highest standards

If the product does not perform as described on this datasheet, we will offer a refund or replacement. For full details of the Abpromise, please visit <https://www.abcam.co.jp/abpromise> or contact our technical team.

Terms and conditions

- Guarantee only valid for products bought direct from Abcam or one of our authorized distributors