

Mouse IL-6 ELISA Kit ab100712

124 References 画像数 6

製品の概要

製品名	Mouse IL-6 ELISA Kit
検出方法	Colorimetric
サンプルの種類	Cell culture supernatant, Serum, Plasma
アッセイタイプ	Sandwich (quantitative)
検出感度	< 2 pg/ml
検出範囲	0.82 pg/ml - 600 pg/ml
添加回収試験	94 %

特定サンプルでの回収試験

サンプルの種類	平均 %	測定範囲
Cell culture supernatant	96.18	86% - 103%
Serum	93.39	83% - 103%
Plasma	94.53	84% - 104%

ステップ Multiple steps standard assay

種交差性 交差種: Mouse

交差が予測される動物種: Human 

製品の概要 Mouse IL-6 ELISA kit is designed for the quantitative measurement of Mouse IL-6 in serum, plasma and cell culture supernatants.

This assay employs an antibody specific for Mouse IL-6 coated on a 96-well plate. Standards and samples are pipetted into the wells and IL-6 present in a sample is bound to the wells by the immobilized antibody. The wells are washed and biotinylated anti-Mouse IL-6 antibody is added. After washing away unbound biotinylated antibody, HRP-conjugated streptavidin is pipetted to the wells. The wells are again washed, a TMB substrate solution is added to the wells and color develops in proportion to the amount of IL-6 bound. The Stop Solution changes the color from blue to yellow, and the intensity of the color is measured at 450 nm.

試験プラットフォーム Microplate

製品の特性

保存方法

Store at -20°C. Please refer to protocols.

内容	1 x 96 tests
200X HRP-Streptavidin Concentrate	1 x 200µl
20X Wash Buffer	1 x 25ml
5X Assay Diluent	1 x 15ml
Biotinylated anti-Mouse IL-6	2 vials
IL-6 Microplate (12 x 8 wells)	1 unit
Recombinant mouse IL-6 Standard (lyophilized)	2 vials
Stop Solution	1 x 8ml
TMB One-Step Substrate Reagent	1 x 12ml

機能

Cytokine with a wide variety of biological functions. It is a potent inducer of the acute phase response. Plays an essential role in the final differentiation of B-cells into Ig-secreting cells. Involved in lymphocyte and monocyte differentiation. It induces myeloma and plasmacytoma growth and induces nerve cells differentiation. Acts on B-cells, T-cells, hepatocytes, hematopoietic progenitor cells and cells of the CNS. Also acts as a myokine. It is discharged into the bloodstream after muscle contraction and acts to increase the breakdown of fats and to improve insulin resistance.

関連疾患

Genetic variations in IL6 are associated with susceptibility to rheumatoid arthritis systemic juvenile (RASJ) [MIM:604302]. An inflammatory articular disorder with systemic-onset beginning before the age of 16. It represents a subgroup of juvenile arthritis associated with severe extraarticular features and occasionally fatal complications. During active phases of the disorder, patients display a typical daily spiking fever, an evanescent macular rash, lymphadenopathy, hepatosplenomegaly, serositis, myalgia and arthritis.
Note=A IL6 promoter polymorphism is associated with a lifetime risk of development of Kaposi sarcoma in HIV-infected men.

配列類似性

Belongs to the IL-6 superfamily.

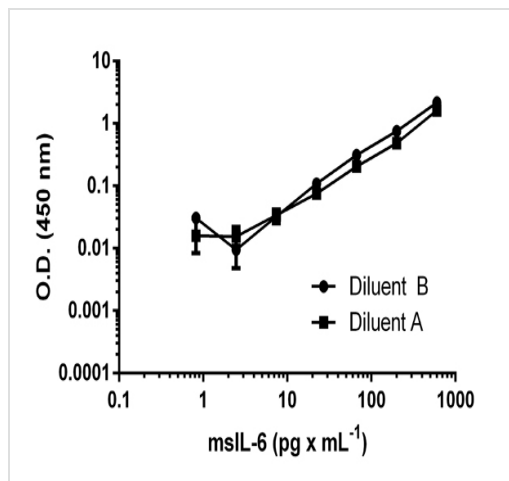
翻訳後修飾

N- and O-glycosylated.

細胞内局在

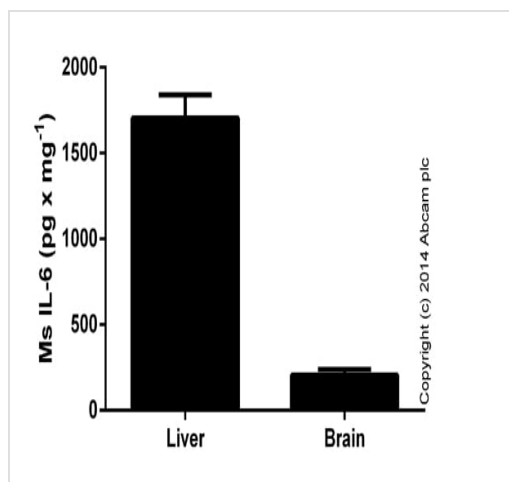
Secreted.

画像



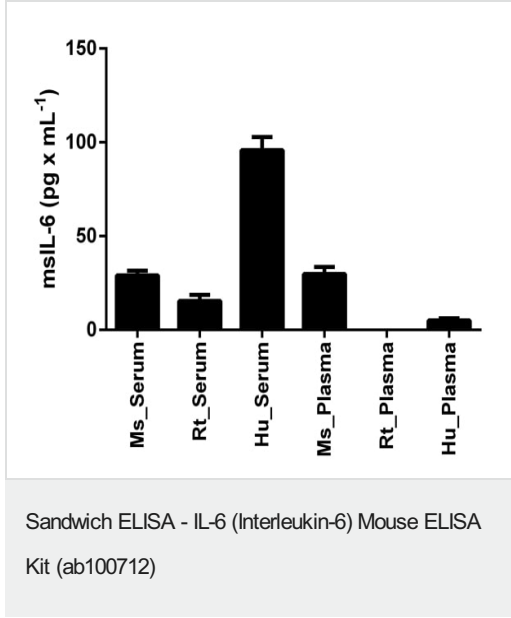
Standard curve of msIL-6 in different diluents with background signal subtracted (duplicates; +/- SD).

Sandwich ELISA - IL-6 (Interleukin-6) Mouse ELISA Kit (ab100712)

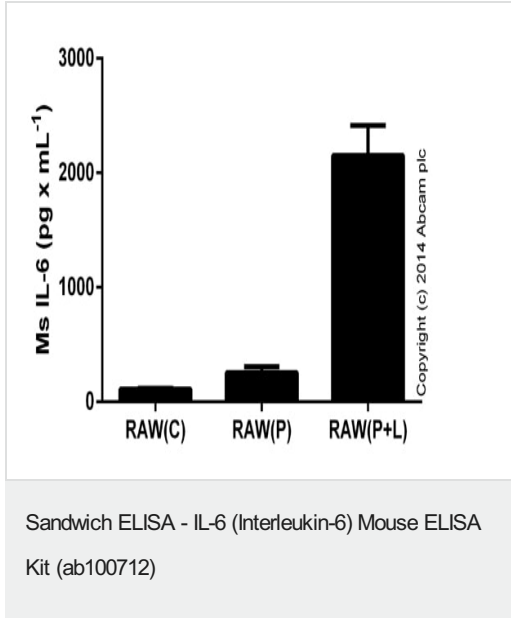


IL-6 measured in mouse tissue lysates (diluted in the range of 1:20 to 1:200; expressed as per mg of extracted protein), with background signal subtracted (duplicates; +/- SD).

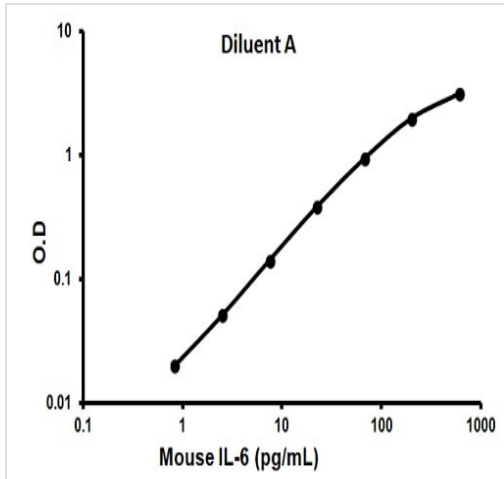
Sandwich ELISA - IL-6 (Interleukin-6) Mouse ELISA Kit (ab100712)



msIL-6 measured in biological fluids, background signal subtracted (duplicates +/- SD).



IL-6 detected in supernatants from RAW 246.7 control cells (C) or cells stimulated for 24 hours with 50 ng x mL⁻¹ of PMA ([ab120297](#)) (P), or 24 hours with PMA and 1 ug x mL⁻¹ of LPS (Sigma) (P+L) for the last 6 hours. Results shown after background signal was subtracted (duplicates +/- SD).



Representative standard curve using ab100712

Typical standard curve



Representative standard curve using ab100712

Typical standard curve

Please note: All products are "FOR RESEARCH USE ONLY. NOT FOR USE IN DIAGNOSTIC PROCEDURES"

Our Abpromise to you: Quality guaranteed and expert technical support

- Replacement or refund for products not performing as stated on the datasheet
- Valid for 12 months from date of delivery
- Response to your inquiry within 24 hours
- We provide support in Chinese, English, French, German, Japanese and Spanish
- Extensive multi-media technical resources to help you

- We investigate all quality concerns to ensure our products perform to the highest standards

If the product does not perform as described on this datasheet, we will offer a refund or replacement. For full details of the Abpromise, please visit <https://www.abcam.co.jp/abpromise> or contact our technical team.

Terms and conditions

- Guarantee only valid for products bought direct from Abcam or one of our authorized distributors