

Mouse IL-17A ELISA Kit ab199081

リコンビナント SimpleStep ELISA

7 References 画像数 7

製品の概要

製品名	Mouse IL-17A ELISA Kit				
検出方法	Colorimetric				
再現性	Intra-Assay (同時再現性)				
	サンプル	N	平均値	SD	CV%
	Serum	5			4.9%
	Inter-Assay (日差再現性)				
	サンプル	N	平均値	SD	CV%
	Serum	3			10.6%
サンプルの種類	Cell culture supernatant, Serum, Cit plasma				
アッセイタイプ	Sandwich (quantitative)				
検出感度	0.5 pg/ml				
検出範囲	6.25 pg/ml - 400 pg/ml				
添加回収試験	特定サンプルでの回収試験				
	サンプルの種類	平均 %		測定範囲	
	Serum	102.5		97.7% - 105.8%	
	Cell culture media	91.1		82.7% - 99.7%	
	Cit plasma	103.6		102.2% - 105.8%	
全工程の試験時間	1h 30m				
ステップ	One step assay				
種交差性	交差種: Mouse				
製品の概要	Mouse IL-17A ELISA Kit (ab199081) is a single-wash 90 min sandwich ELISA designed for the				

uses our proprietary SimpleStep ELISA® technology. Quantitate Mouse IL-17A with 0.5 pg/ml sensitivity.

SimpleStep ELISA® technology employs capture antibodies conjugated to an affinity tag that is recognized by the monoclonal antibody used to coat our SimpleStep ELISA® plates. This approach to sandwich ELISA allows the formation of the antibody-analyte sandwich complex in a single step, significantly reducing assay time. See the SimpleStep ELISA® protocol summary in the image section for further details. Our SimpleStep ELISA® technology provides several benefits:

- Single-wash protocol reduces assay time to 90 minutes or less
- High sensitivity, specificity and reproducibility from superior antibodies
- Fully validated in biological samples
- 96-wells plate breakable into 12 x 8 wells strips

A 384-well SimpleStep ELISA® microplate (**ab203359**) is available to use as an alternative to the 96-well microplate provided with SimpleStep ELISA® kits.

特記事項

IL-17A is a pro-inflammatory cytokine that is secreted by a subset of activated T cells. It is a disulfide-linked homodimer with both glycosylated and non-glycosylated forms. IL-17A induces stromal cells to produce pro-inflammatory and hematopoietic cytokines, and also enhances the surface expression of ICAM1/intracellular adhesion molecule 1 in fibroblasts.

試験プラットフォーム

Microplate (12 x 8 well strips)

製品の特性

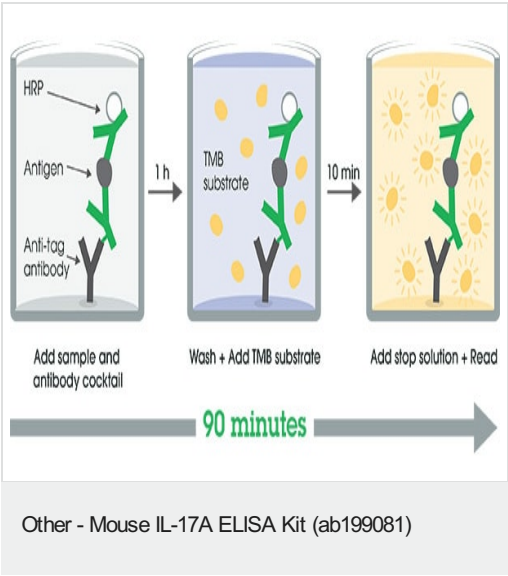
保存方法

Store at +4°C. Please refer to protocols.

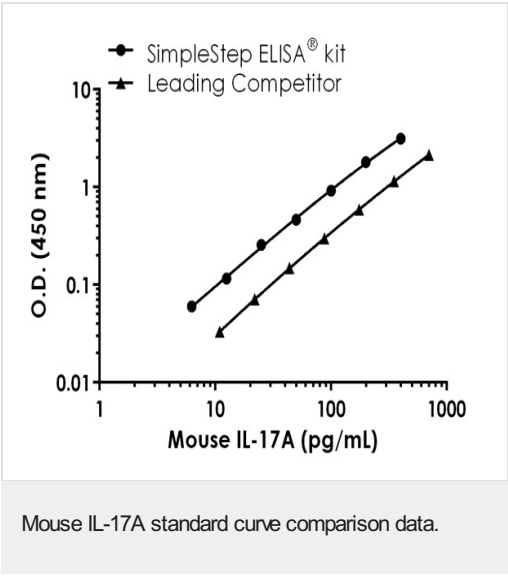
内容	1 x 96 tests	1 x 96 tests
10X Mouse IL-17a Capture Antibody	1 x 600µl	1 x 600µl
10X Mouse IL-17a Detector Antibody	1 x 600µl	1 x 600µl
10X Wash Buffer PT (ab206977)	1 x 20ml	1 x 20ml
Antibody Diluent CPI2	1 x 6ml	1 x 6ml
Mouse IL-17a Lyophilized Recombinant Protein	2 vials	2 vials
Plate Seals	1 unit	1 unit
Sample Diluent 25BP	1 x 20ml	1 x 20ml
Sample Diluent NS (ab193972)	1 x 50ml	1 x 50ml
SimpleStep Pre-Coated 96-Well Microplate (ab206978)	1 unit	1 unit
Stop Solution	1 x 12ml	1 x 12ml
TMB Development Solution	1 x 12ml	1 x 12ml

機能	Induces stromal cells to produce proinflammatory and hematopoietic cytokines. Enhances the surface expression of the intracellular adhesion molecule-1 (ICAM-1) in fibroblasts.
組織特異性	Restricted to activated memory T-cells.
配列類似性	Belongs to the IL-17 family.
翻訳後修飾	Found both in glycosylated and nonglycosylated forms.
細胞内局在	Secreted.

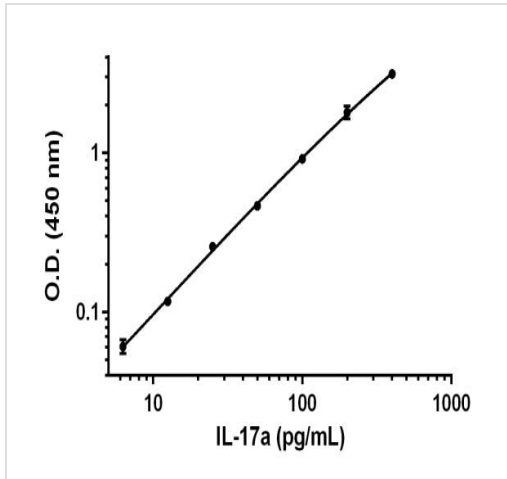
画像



SimpleStep ELISA technology allows the formation of the antibody-antigen complex in one single step, reducing assay time to 90 minutes. Add samples or standards and antibody mix to wells all at once, incubate, wash, and add your final substrate. See protocol for a detailed step-by-step guide.

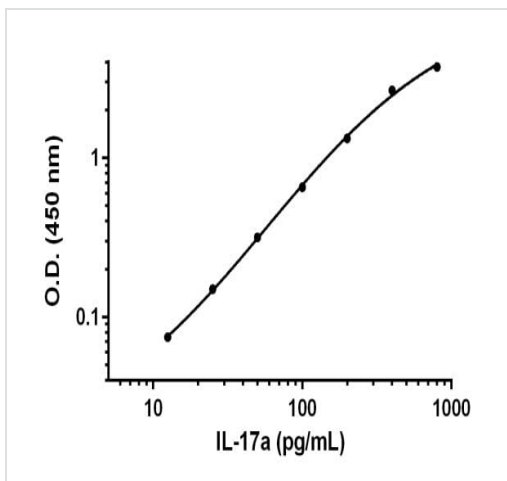


Standard curve comparison between mouse IL-17A SimpleStep ELISA[®] kit and traditional ELISA kit from leading competitor. SimpleStep ELISA kit shows a 9-fold increase in sensitivity.



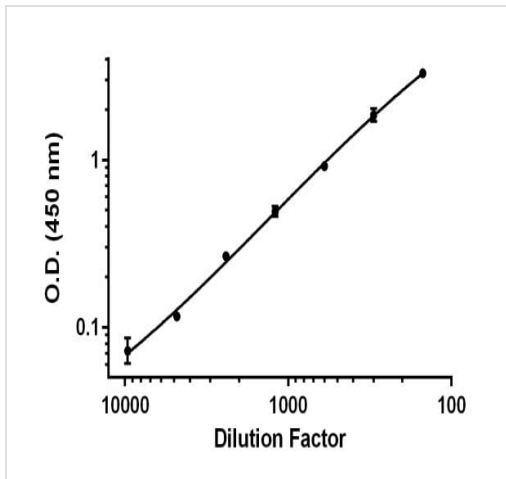
Background-subtracted data values (mean \pm SD) are graphed.

Example of IL-17a standard curve prepared in
Sample Diluent NS.



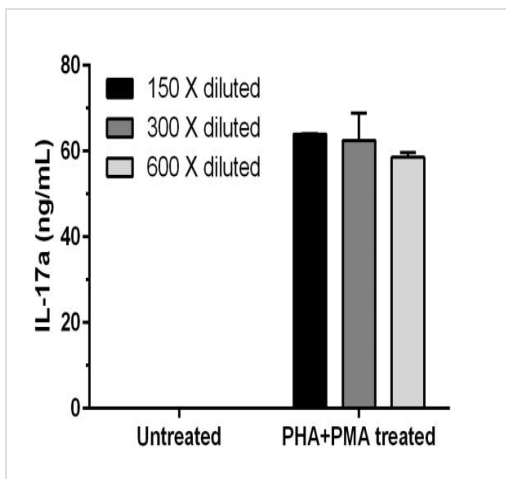
Background-subtracted data values (mean \pm SD) are graphed.

Example of IL-17a standard curve prepared in
Sample Diluent 25BP.



Demonstration of the linearity of dilution of the assay.

Titration of PHA+PMA stimulated EL4 cell culture supernatant within the working range of the assay. EL4 cells were cultured in the presence of 1.5% phytohemagglutinin (PHA) and 10 ng/mL phorbol 12-myristate 13-acetate (PMA) for 48 hours. The cell culture supernatant was collected and measured in 2-fold dilution series. Background-subtracted data values (mean \pm SD, $n = 2$) are graphed.



PHA+PMA treatment of EL4 cells stimulates secretion of IL-17a.

EL4 cells were cultured in the absence or presence of 1.5% PHA and 10 ng/mL PMA for 48 hours. The cell culture supernatants were collected and their dilutions (as indicated) were measured with this kit. Interpolated concentrations of IL-17a adjusted for sample dilution are graphed in ng of IL-17a per mL of supernatant (mean \pm SD, $n = 2$). Note that IL-17a is not detectable in the untreated EL4 supernatant samples.

Powered by
recombinant antibodies



Research with confidence
Consistent and reproducible results



Long-term and scalable supply
Recombinant technology



Success from the first experiment
Confirmed specificity



Ethical standards compliant
Animal-free production

Sandwich ELISA - Mouse IL-17A ELISA Kit
(ab199081)

To learn more about the advantages of recombinant antibodies see [here](#).

Please note: All products are "FOR RESEARCH USE ONLY. NOT FOR USE IN DIAGNOSTIC PROCEDURES"

Our Abpromise to you: Quality guaranteed and expert technical support

- Replacement or refund for products not performing as stated on the datasheet
- Valid for 12 months from date of delivery
- Response to your inquiry within 24 hours
- We provide support in Chinese, English, French, German, Japanese and Spanish
- Extensive multi-media technical resources to help you
- We investigate all quality concerns to ensure our products perform to the highest standards

If the product does not perform as described on this datasheet, we will offer a refund or replacement. For full details of the Abpromise, please visit <https://www.abcam.co.jp/abpromise> or contact our technical team.

Terms and conditions

- Guarantee only valid for products bought direct from Abcam or one of our authorized distributors