

Mouse I-TAC ELISA Kit (CXCL11) ab100716

2 References 画像数 2

製品の概要

製品名	Mouse I-TAC ELISA Kit (CXCL11)
検出方法	Colorimetric
サンプルの種類	Cell culture supernatant, Serum, Plasma
アッセイタイプ	Sandwich (quantitative)
検出感度	< 6 pg/ml
検出範囲	5.487 pg/ml - 4000 pg/ml
添加回収試験	80 %

特定サンプルでの回収試験

サンプルの種類	平均 %	測定範囲
Cell culture supernatant	74.46	67% - 86%
Serum	91.12	80% - 101%
Plasma	75.6	68% - 88%

ステップ Multiple steps standard assay

種交差性 交差種: Mouse

製品の概要 Abcam's I-TAC Mouse ELISA (Enzyme-Linked Immunosorbent Assay) kit is an *in vitro* enzyme-linked immunosorbent assay for the quantitative measurement of mouse I-TAC in serum, plasma and cell culture supernatants.

This assay employs an antibody specific for mouse I-TAC coated on a 96-well plate. Standards and samples are pipetted into the wells and I-TAC present in a sample is bound to the wells by the immobilized antibody. The wells are washed and biotinylated anti-mouse I-TAC antibody is added. After washing away unbound biotinylated antibody, HRP conjugated streptavidin is pipetted to the wells. The wells are again washed, a TMB substrate solution is added to the wells and color develops in proportion to the amount of I-TAC bound. The Stop Solution changes the color from blue to yellow, and the intensity of the color is measured at 450 nm.

試験プラットフォーム Microplate

製品の特性

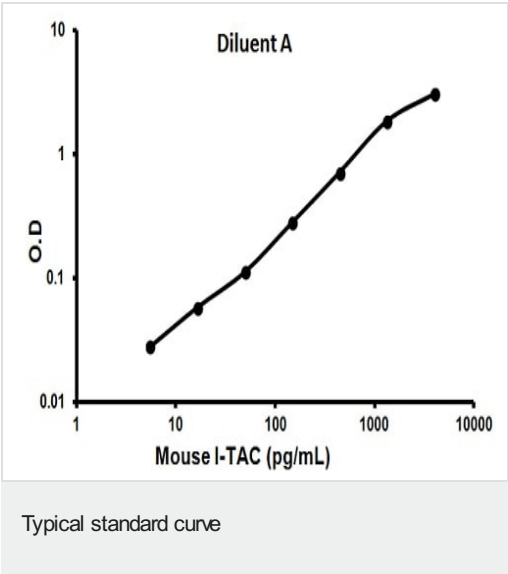
保存方法

Store at -20°C. Please refer to protocols.

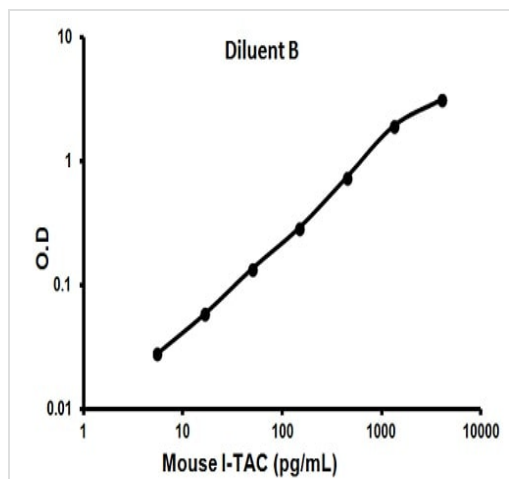
内容	1 x 96 tests
20X Wash Buffer	1 x 25ml
300X HRP-Streptavidin Concentrate	1 x 200µl
5X Assay Diluent B	1 x 15ml
Assay Diluent A	1 x 30ml
Biotinylated anti-Mouse I-TAC	2 vials
I-TAC Microplate (12 x 8 wells)	1 unit
Recombinant mouse I-TAC Standard (lyophilized)	2 vials
Stop Solution	1 x 8ml
TMB One-Step Substrate Reagent	1 x 12ml

機能	Chemotactic for interleukin-activated T-cells but not unstimulated T-cells, neutrophils or monocytes. Induces calcium release in activated T-cells. Binds to CXCR3. May play an important role in CNS diseases which involve T-cell recruitment. May play a role in skin immune responses.
組織特異性	High levels in peripheral blood leukocytes, pancreas and liver astrocytes. Moderate levels in thymus, spleen and lung. Low levels in placenta, prostate and small intestine. Also found in epidermal basal layer keratinocytes in skin disorders.
配列類似性	Belongs to the intercrine alpha (chemokine CxC) family.
細胞内局在	Secreted.

画像



Representative standard curve using ab100716



Representative standard curve using ab100716

Typical standard curve

**Please note:** All products are "FOR RESEARCH USE ONLY. NOT FOR USE IN DIAGNOSTIC PROCEDURES"

### Our Abpromise to you: Quality guaranteed and expert technical support

- Replacement or refund for products not performing as stated on the datasheet
- Valid for 12 months from date of delivery
- Response to your inquiry within 24 hours
- We provide support in Chinese, English, French, German, Japanese and Spanish
- Extensive multi-media technical resources to help you
- We investigate all quality concerns to ensure our products perform to the highest standards

If the product does not perform as described on this datasheet, we will offer a refund or replacement. For full details of the Abpromise, please visit <https://www.abcam.co.jp/abpromise> or contact our technical team.

### Terms and conditions

- Guarantee only valid for products bought direct from Abcam or one of our authorized distributors