

Mouse E-Cadherin ELISA Kit ab197751

リコンビナント SimpleStep ELISA

9 References 画像数 7

製品の概要

製品名	Mouse E-Cadherin ELISA Kit				
検出方法	Colorimetric				
再現性	Intra-Assay (同時再現性)				
	サンプル	N	平均値	SD	CV%
	Serum	5			2.4%
	Inter-Assay (日差再現性)				
	サンプル	N	平均値	SD	CV%
	Serum	3			4.9%
サンプルの種類	Cell culture supernatant, Serum, Tissue Extracts, Cit plasma				
アッセイタイプ	Sandwich (quantitative)				
検出感度	36 pg/ml				
検出範囲	156.3 pg/ml - 10000 pg/ml				
添加回収試験	特定サンプルでの回収試験				
	サンプルの種類		平均 %	測定範囲	
	Serum		103	100% - 107%	
	Cell culture media		106	103% - 107%	
	Cit plasma		103	103% - 104%	
全工程の試験時間	1h 30m				
ステップ	One step assay				
種交差性	交差種: Mouse 非交差種: Goat, Cow				
製品の概要	Mouse E-Cadherin ELISA Kit (ab197751) is a single-wash 90 min sandwich ELISA designed for				

the quantitative measurement of E-Cadherin protein in cit plasma, serum, tissue extracts, and cell culture supernatant. It uses our proprietary SimpleStep ELISA® technology. Quantitate Mouse E-Cadherin with 36 pg/ml sensitivity.

SimpleStep ELISA® technology employs capture antibodies conjugated to an affinity tag that is recognized by the monoclonal antibody used to coat our SimpleStep ELISA® plates. This approach to sandwich ELISA allows the formation of the antibody-analyte sandwich complex in a single step, significantly reducing assay time. See the SimpleStep ELISA® protocol summary in the image section for further details. Our SimpleStep ELISA® technology provides several benefits:

- Single-wash protocol reduces assay time to 90 minutes or less
- High sensitivity, specificity and reproducibility from superior antibodies
- Fully validated in biological samples
- 96-wells plate breakable into 12 x 8 wells strips

A 384-well SimpleStep ELISA® microplate (**ab203359**) is available to use as an alternative to the 96-well microplate provided with SimpleStep ELISA® kits.

特記事項

E-Cadherin is a member of the Cadherin family of calcium-dependent cell adhesion proteins. E-Cadherin is a single-pass transmembrane protein on the plasma membrane. The extracellular portion contains 5 cadherin domains that bind calcium and form homodimeric interactions. E-Cadherin is involved in mechanisms regulating cell-cell adhesions, mobility and proliferation of epithelial cells.

Abcam has not and does not intend to apply for the REACH Authorisation of customers' uses of products that contain European Authorisation list (Annex XIV) substances.

It is the responsibility of our customers to check the necessity of application of REACH Authorisation, and any other relevant authorisations, for their intended uses.

試験プラットフォーム

Microplate (12 x 8 well strips)

製品の特徴

保存方法

Store at +4°C. Please refer to protocols.

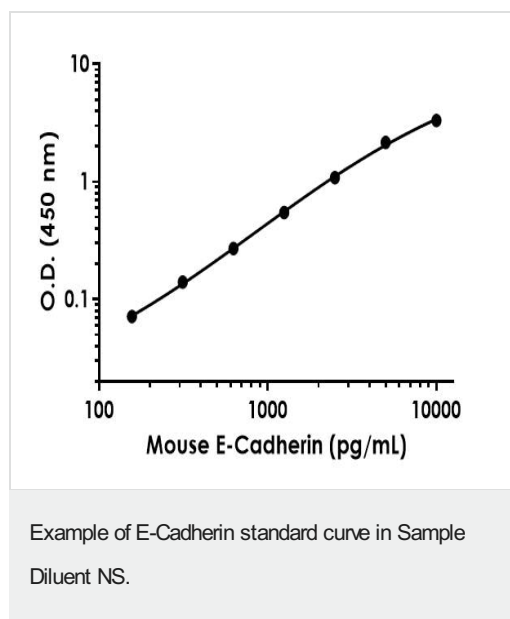
内容	1 x 96 tests
10X Mouse E-Cadherin Capture Antibody	1 x 600µl
10X Mouse E-Cadherin Detector Antibody	1 x 600µl
10X Wash Buffer PT (ab206977)	1 x 20ml
50X Cell Extraction Enhancer Solution (ab193971)	1 x 1ml
5X Cell Extraction Buffer PTR (ab193970)	1 x 10ml
Antibody Diluent 5BR	1 x 6ml
Mouse E-Cadherin Lyophilized Recombinant Protein	2 vials

内容	1 x 96 tests
Plate Seals	1 unit
Sample Diluent NS (ab193972)	1 x 50ml
SimpleStep Pre-Coated 96-Well Microplate (ab206978)	1 unit
Stop Solution	1 x 12ml
TMB Development Solution	1 x 12ml

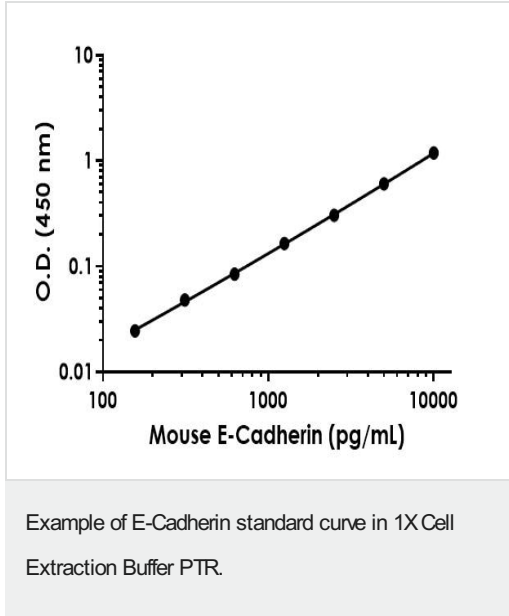
関連性

One of the epithelial cell adhesion molecules, E Cadherin, plays an important role in the formation of cell-cell contacts in epithelia irrespective their origin from ecto-, meso- or endodermal tissue. This early adhesion event between epithelial cells is a prerequisite for the assembly of all elements of the junctional complex. Furthermore, E Cadherin plays a crucial role in the maintenance of the epithelial junctional complex and is as such an important molecule in maintaining epithelial integrity. Over 90% of the malignant tumors are carcinomas. One of the prerequisites for the release of carcinoma cells from the primary site might be a defect in intercellular adhesion mediated by the absence of E Cadherin expression. Therefore, the expression of E Cadherin might be an important parameter for the determination of the invasive potential of epithelial neoplasms, and for the transition of a benign to a malignant neoplasm.

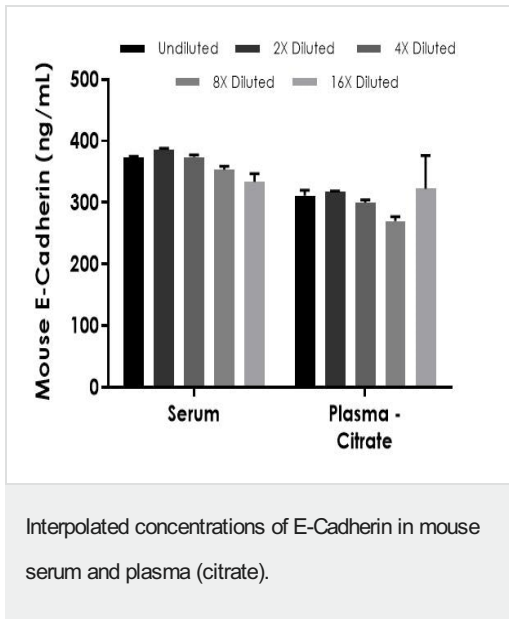
画像



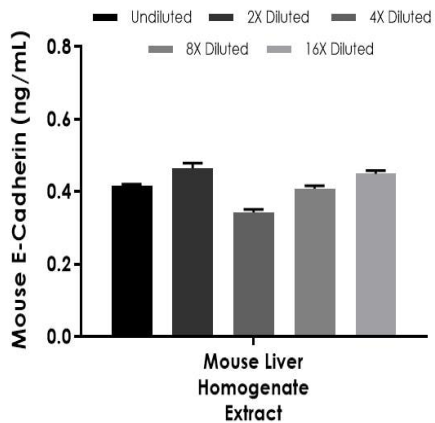
Background-subtracted data values (mean \pm SD) are graphed.



Background-subtracted data values (mean +/- SD) are graphed.

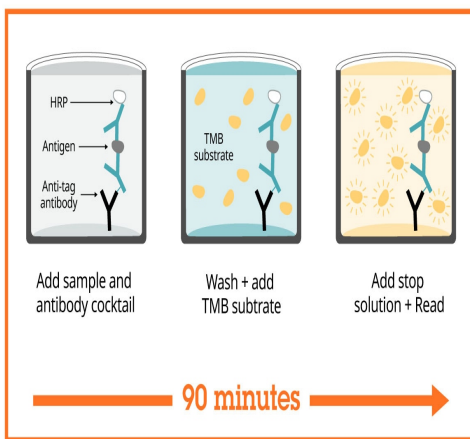


The concentrations of E-Cadherin were measured in duplicate and interpolated from the E-Cadherin standard curve and corrected for sample dilution. The interpolated dilution factor corrected values are plotted (mean +/- SD, n=2). The mean E-Cadherin concentration was determined to be 364.1 ng/mL in mouse serum and 304.2 ng/mL in mouse plasma (citrate).



Interpolated concentrations of native E-Cadherin in mouse liver homogenate extract based on a 250 µg/mL extract load.

The concentrations of E-Cadherin were measured in duplicate and interpolated from the E-Cadherin standard curve and corrected for sample dilution. The interpolated dilution factor corrected values are plotted (mean \pm SD, n=2). The mean E-Cadherin concentration was determined to be 0.42 ng/mL in mouse liver homogenate extract.



SimpleStep ELISA technology allows the formation of the antibody-antigen complex in one single step, reducing assay time to 90 minutes. Add samples or standards and antibody mix to wells all at once, incubate, wash, and add your final substrate. See protocol for a detailed step-by-step guide.

Sandwich ELISA - Mouse E-Cadherin ELISA Kit
(ab197751)

Powered by
recombinant antibodies



Research with confidence
Consistent and reproducible results



Long-term and scalable supply
Recombinant technology



Success from the first experiment
Confirmed specificity



Ethical standards compliant
Animal-free production

Sandwich ELISA - Mouse E-Cadherin ELISA Kit
(ab197751)

To learn more about the advantages of recombinant antibodies see [here](#).

**Get more done with
SimpleStep ELISA**



Easy to use
Single-wash 90-minute protocol



Flexible
Matched antibody pairs available



Precision antibodies
High sensitivity, specificity and reproducibility



Scalable
Now in 10-pack and 384-well formats

Sandwich ELISA - Mouse E-Cadherin ELISA Kit
(ab197751)

To learn more about the advantages of SimpleStep ELISA® kits see [here](#).

Please note: All products are "FOR RESEARCH USE ONLY. NOT FOR USE IN DIAGNOSTIC PROCEDURES"

Our Abpromise to you: Quality guaranteed and expert technical support

- Replacement or refund for products not performing as stated on the datasheet
- Valid for 12 months from date of delivery
- Response to your inquiry within 24 hours
- We provide support in Chinese, English, French, German, Japanese and Spanish

- Extensive multi-media technical resources to help you
- We investigate all quality concerns to ensure our products perform to the highest standards

If the product does not perform as described on this datasheet, we will offer a refund or replacement. For full details of the Abpromise, please visit <https://www.abcam.co.jp/abpromise> or contact our technical team.

Terms and conditions

- Guarantee only valid for products bought direct from Abcam or one of our authorized distributors