

Mouse CXCL9 ELISA Kit ab100725

1 References [画像数 2](#)

製品の概要

製品名	Mouse CXCL9 ELISA Kit
検出方法	Colorimetric
サンプルの種類	Cell culture supernatant, Serum, Plasma
アッセイタイプ	Sandwich (quantitative)
検出感度	< 3 pg/ml
検出範囲	2.741 pg/ml - 2000 pg/ml
添加回収試験	83 %

特定サンプルでの回収試験

サンプルの種類	平均 %	測定範囲
Cell culture supernatant	74.58	67% - 81%
Serum	91.81	80% - 101%
Plasma	85.55	77% - 93%

ステップ Multiple steps standard assay

種交差性 交差種: Mouse

製品の概要 Abcam's CXCL9 Mouse ELISA (Enzyme-Linked Immunosorbent Assay) kit is an *in vitro* enzyme-linked immunosorbent assay for the quantitative measurement of mouse CXCL9 in serum, plasma and cell culture supernatants.

This assay employs an antibody specific for mouse CXCL9 coated on a 96-well plate. Standards and samples are pipetted into the wells and CXCL9 present in a sample is bound to the wells by the immobilized antibody. The wells are washed and biotinylated anti-mouse CXCL9 antibody is added. After washing away unbound biotinylated antibody, HRP-conjugated streptavidin is pipetted to the wells. The wells are again washed, a TMB substrate solution is added to the wells and color develops in proportion to the amount of CXCL9 bound. The Stop Solution changes the color from blue to yellow, and the intensity of the color is measured at 450 nm.

Get higher sensitivity in only 90 minutes with Mouse CXCL9 ELISA Kit (CXCL9) ([ab203364](#)) from our SimpleStep ELISA® range.

製品の特性

保存方法

Store at -20°C. Please refer to protocols.

内容	1 x 96 tests
20X Wash Buffer	1 x 25ml
240X HRP-Streptavidin Concentrate	1 x 200µl
5X Assay Diluent B	1 x 15ml
Assay Diluent C	1 x 30ml
Biotinylated anti-mouse CXCL9	2 vials
CXCL9 Microplate (12 x 8 wells)	1 unit
Recombinant Mouse CXCL9 Standard (lyophilized)	2 vials
Stop Solution	1 x 8ml
TMB One-Step Substrate Reagent	1 x 12ml

機能

Cytokine that affects the growth, movement, or activation state of cells that participate in immune and inflammatory response. Chemotactic for activated T-cells. Binds to CXCR3.

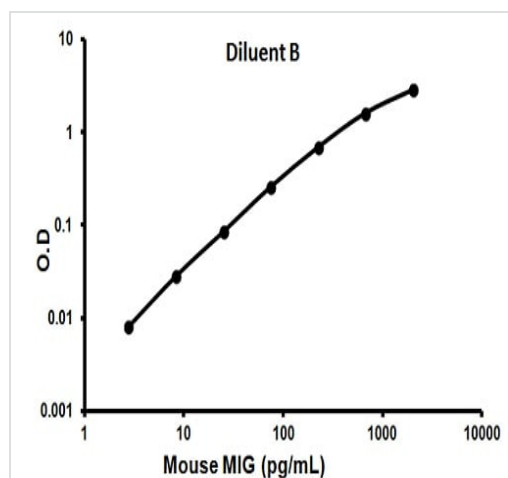
配列類似性

Belongs to the intercrine alpha (chemokine CxC) family.

細胞内局在

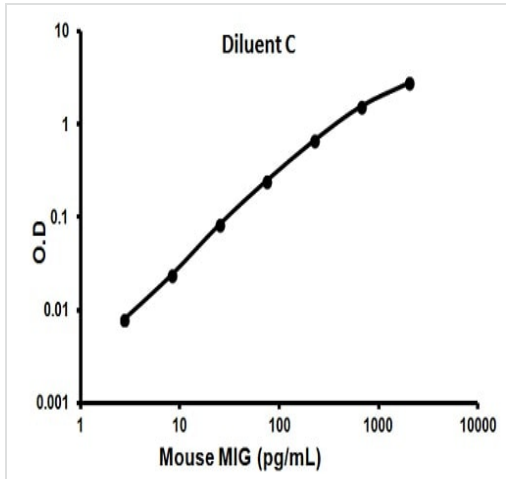
Secreted.

画像



Representative standard curve using ab100725

Typical standard curve



Representative standard curve using ab100725

Typical standard curve

Please note: All products are "FOR RESEARCH USE ONLY. NOT FOR USE IN DIAGNOSTIC PROCEDURES"

Our Abpromise to you: Quality guaranteed and expert technical support

- Replacement or refund for products not performing as stated on the datasheet
- Valid for 12 months from date of delivery
- Response to your inquiry within 24 hours
- We provide support in Chinese, English, French, German, Japanese and Spanish
- Extensive multi-media technical resources to help you
- We investigate all quality concerns to ensure our products perform to the highest standards

If the product does not perform as described on this datasheet, we will offer a refund or replacement. For full details of the Abpromise, please visit <https://www.abcam.co.jp/abpromise> or contact our technical team.

Terms and conditions

- Guarantee only valid for products bought direct from Abcam or one of our authorized distributors