

Mouse Axl ELISA Kit ab100669

画像数 2

製品の概要

製品名	Mouse Axl ELISA Kit
検出方法	Colorimetric
サンプルの種類	Cell culture supernatant, Serum, Plasma
アッセイタイプ	Sandwich (quantitative)
検出感度	< 1 pg/ml
検出範囲	1 pg/ml - 250 pg/ml
添加回収試験	95 %

特定サンプルでの回収試験

サンプルの種類	平均 %	測定範囲
Cell culture supernatant	93.26	81% - 105%
Serum	95.29	82% - 104%
Plasma	97.56	84% - 106%

ステップ Multiple steps standard assay

種交差性 交差種: Mouse

製品の概要 Abcam's Axl Mouse ELISA (Enzyme-Linked Immunosorbent Assay) kit is an *in vitro* enzyme-linked immunosorbent assay for the quantitative measurement of mouse Axl in serum, plasma and cell culture supernates.

This assay employs an antibody specific for mouse Axl coated on a 96-well plate. Standards and samples are pipetted into the wells and Axl present in a sample is bound to the wells by the immobilized antibody. The wells are washed and biotinylated anti-mouse Axl antibody is added. After washing away unbound biotinylated antibody, HRP-conjugated streptavidin is pipetted to the wells. The wells are again washed, a TMB substrate solution is added to the wells and color develops in proportion to the amount of Axl bound. The Stop Solution changes the color from blue to yellow, and the intensity of the color is measured at 450 nm.

Get better reproducibility in only 90 minutes with Mouse Axl ELISA Kit ([ab207619](#)) from our SimpleStep ELISA® range.

製品の特性

保存方法

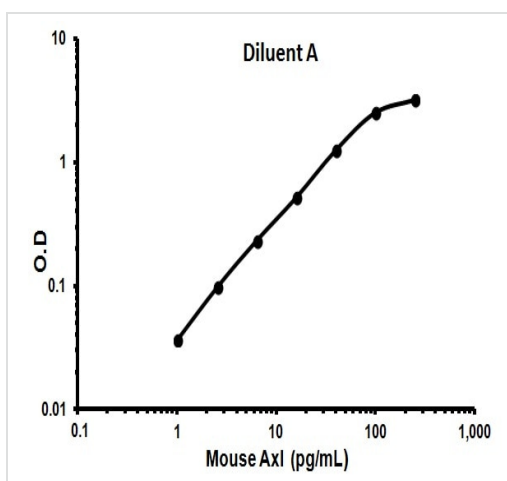
Store at -20°C. Please refer to protocols.

内容	1 x 96 tests
20X Wash Buffer	1 x 25ml
5X Assay Diluent B	1 x 15ml
80x HRP-Streptavidin Concentrate	1 x 200µl
Assay Diluent A	1 x 30ml
Axl Microplate (12 trips x 8 wells)	1 unit
Biotinylated anti-mouse Axl	2 vials
Recombinant Mouse Axl Standard (lyophilized)	2 vials
Stop Solution	1 x 8ml
TMB One-Step Substrate Reagent	1 x 12ml

関連性

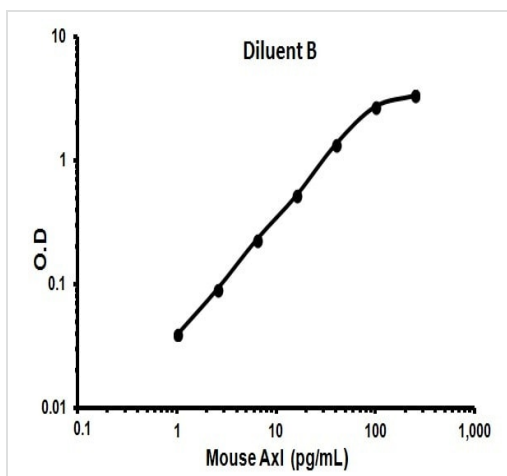
The protein encoded by this gene is a member of the receptor tyrosine kinase subfamily. Although it is similar to other receptor tyrosine kinases, the Axl protein represents a unique structure of the extracellular region that juxtaposes IgL and FNIII repeats. It transduces signals from the extracellular matrix into the cytoplasm by binding growth factors such as vitamin K dependent protein growth arrest specific gene 6. It is involved in the stimulation of cell proliferation. This receptor can also mediate cell aggregation by homophilic binding. Axl is a chronic myelogenous leukemia associated oncogene and also associated with colon cancer and melanoma. It is in close vicinity to the bcl3 oncogene which is at 19q13.1-q13.2. The Axl gene is evolutionarily conserved between vertebrate species. This gene has two different alternatively spliced transcript variants (AXL1 and AXL2).

画像



Representative Standard Curve using ab100669.

Typical Standard Curve



Representative Standard Curve using ab100669.

Typical Standard Curve

Please note: All products are "FOR RESEARCH USE ONLY. NOT FOR USE IN DIAGNOSTIC PROCEDURES"

Our Abpromise to you: Quality guaranteed and expert technical support

- Replacement or refund for products not performing as stated on the datasheet
- Valid for 12 months from date of delivery

- Response to your inquiry within 24 hours
- We provide support in Chinese, English, French, German, Japanese and Spanish
- Extensive multi-media technical resources to help you
- We investigate all quality concerns to ensure our products perform to the highest standards

If the product does not perform as described on this datasheet, we will offer a refund or replacement. For full details of the Abpromise, please visit <https://www.abcam.co.jp/abpromise> or contact our technical team.

Terms and conditions

- Guarantee only valid for products bought direct from Abcam or one of our authorized distributors