

Human RAGE ELISA Kit ab100632

★★★★☆ [1 Abreviews](#) [1 References](#) [画像数 2](#)

製品の概要

製品名	Human RAGE ELISA Kit
検出方法	Colorimetric
サンプルの種類	Cell culture supernatant, Serum, Plasma
アッセイタイプ	Sandwich (quantitative)
検出感度	< 3 pg/ml
検出範囲	2.06 pg/ml - 1500 pg/ml
添加回収試験	90 %

特定サンプルでの回収試験

サンプルの種類	平均 %	測定範囲
Cell culture supernatant	103.4	94% - 112%
Serum	89.25	79% - 98%
Plasma	78.58	67% - 93%

ステップ Multiple steps standard assay

種交差性 交差種: Human

製品の概要 Abcam's RAGE Human ELISA (Enzyme-Linked Immunosorbent Assay) kit is an *in vitro* enzyme-linked immunosorbent assay for the quantitative measurement of Human RAGE in serum, plasma and cell culture supernatants.

This assay employs an antibody specific for Human RAGE coated on a 96-well plate. Standards and samples are pipetted into the wells and RAGE present in a sample is bound to the wells by the immobilized antibody. The wells are washed and biotinylated anti-Human RAGE antibody is added. After washing away unbound biotinylated antibody, HRP-conjugated streptavidin is pipetted to the wells. The wells are again washed, a TMB substrate solution is added to the wells and color develops in proportion to the amount of RAGE bound. The Stop Solution changes the color from blue to yellow, and the intensity of the color is measured at 450 nm.

Get higher sensitivity in only 90 minutes with Human RAGE ELISA Kit ([ab190807](#)) from our SimpleStep ELISA[®] range.

特記事項 Optimization may be required with urine samples.

試験プラットフォーム Microplate

製品の特性

保存方法 Store at -20°C. Please refer to protocols.

内容	1 x 96 tests
200X HRP-Streptavidin Concentrate	1 x 200µl
20X Wash Buffer	1 x 25ml
5X Assay Diluent B	1 x 15ml
Assay Diluent A	1 x 30ml
Biotinylated anti-Human RAGE	2 vials
RAGE Microplate (12 x 8 wells)	1 unit
Recombinant Human RAGE Standard (lyophilized)	2 vials
Stop Solution	1 x 8ml
TMB One-Step Substrate Reagent	1 x 12ml

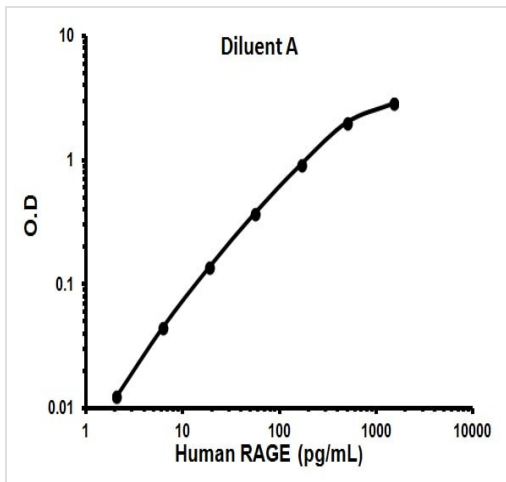
機能 Mediates interactions of advanced glycosylation end products (AGE). These are nonenzymatically glycosylated proteins which accumulate in vascular tissue in aging and at an accelerated rate in diabetes. Acts as a mediator of both acute and chronic vascular inflammation in conditions such as atherosclerosis and in particular as a complication of diabetes. AGE/RAGE signaling plays an important role in regulating the production/expression of TNF-alpha, oxidative stress, and endothelial dysfunction in type 2 diabetes. Interaction with S100A12 on endothelium, mononuclear phagocytes, and lymphocytes triggers cellular activation, with generation of key proinflammatory mediators. Interaction with S100B after myocardial infarction may play a role in myocyte apoptosis by activating ERK1/2 and p53/TP53 signaling (By similarity). Receptor for amyloid beta peptide. Contributes to the translocation of amyloid-beta peptide (ABPP) across the cell membrane from the extracellular to the intracellular space in cortical neurons. ABPP-initiated RAGE signaling, especially stimulation of p38 mitogen-activated protein kinase (MAPK), has the capacity to drive a transport system delivering ABPP as a complex with RAGE to the intraneuronal space.

組織特異性 Endothelial cells.

配列類似性 Contains 2 Ig-like C2-type (immunoglobulin-like) domains.
Contains 1 Ig-like V-type (immunoglobulin-like) domain.

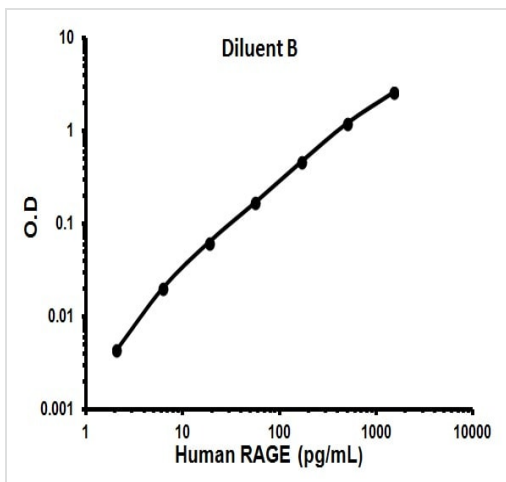
細胞内局在 Secreted and Cell membrane.

画像



Representative Standard Curve using ab100632.

Typical Standard Curve



Representative Standard Curve using ab100632.

Typical Standard Curve

Please note: All products are "FOR RESEARCH USE ONLY. NOT FOR USE IN DIAGNOSTIC PROCEDURES"

Our Abpromise to you: Quality guaranteed and expert technical support

- Replacement or refund for products not performing as stated on the datasheet
- Valid for 12 months from date of delivery
- Response to your inquiry within 24 hours
- We provide support in Chinese, English, French, German, Japanese and Spanish
- Extensive multi-media technical resources to help you
- We investigate all quality concerns to ensure our products perform to the highest standards

If the product does not perform as described on this datasheet, we will offer a refund or replacement. For full details of the Abpromise, please visit <https://www.abcam.co.jp/abpromise> or contact our technical team.

Terms and conditions

- Guarantee only valid for products bought direct from Abcam or one of our authorized distributors