

Human PSA ELISA Kit (KLK3) ab113327

5 References [画像数 3](#)

製品の概要

製品名 Human PSA ELISA Kit (KLK3)

検出方法 Colorimetric

再現性 Intra-Assay (同時再現性)

サンプル	N	平均値	SD	CV%
Overall				< 10%

Inter-Assay (日差再現性)

サンプル	N	平均値	SD	CV%
Overall				< 12%

サンプルの種類 Cell culture supernatant, Serum, Plasma

アッセイタイプ Sandwich (quantitative)

検出感度 < 8 pg/ml

検出範囲 10.24 pg/ml - 2500 pg/ml

添加回収試験 93 %

特定サンプルでの回収試験

サンプルの種類	平均 %	測定範囲
Cell culture supernatant	95.25	81% - 108%
Serum	105.4	94% - 112%
Plasma	80.63	72% - 94%

ステップ Multiple steps standard assay

種交差性 交差種: Human

製品の概要 Abcam's PSA Human ELISA (Enzyme-Linked Immunosorbent Assay) kit is an *in vitro* enzyme-linked immunosorbent assay for the quantitative measurement of Human PSA in serum, plasma and cell culture supernatants.

This assay employs an antibody specific for Human PSA coated on a 96-well plate. Standards and samples are pipetted into the wells and PSA present in a sample is bound to the wells by the immobilized antibody. The wells are washed and biotinylated anti-Human PSA antibody is added. After washing away unbound biotinylated antibody, HRP-conjugated streptavidin is pipetted to the wells. The wells are again washed, a TMB substrate solution is added to the wells and color develops in proportion to the amount of PSA bound. The Stop Solution changes the color from blue to yellow, and the intensity of the color is measured at 450 nm.

Get results in 90 minutes with Human Total Prostate Specific Antigen ELISA Kit ([ab188388](#)) from our SimpleStep ELISA® range.

特記事項 Optimization may be required with urine samples.

試験プラットフォーム Microplate

製品の特性

保存方法 Store at -20°C. Please refer to protocols.

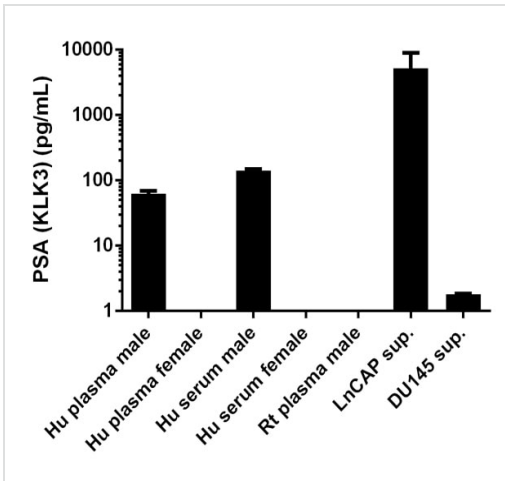
内容	ラベル	1 x 96 tests
20X Wash Buffer		1 x 25ml
500X HRP-Streptavidin Concentrate		1 x 200µl
5X Assay Diluent B		1 x 15ml
Assay Diluent A		1 x 30ml
Biotinylated anti-Human PSA	Item F	2 vials
PSA Microplate (12 x 8 wells)	Item A	1 unit
Recombinant Human PSA Standard (lyophilized)		2 vials
Stop Solution		1 x 8ml
TMB One-Step Substrate Reagent		1 x 12ml

機能 Hydrolyzes semenogelin-1 thus leading to the liquefaction of the seminal coagulum.

配列類似性 Belongs to the peptidase S1 family. Kallikrein subfamily.
Contains 1 peptidase S1 domain.

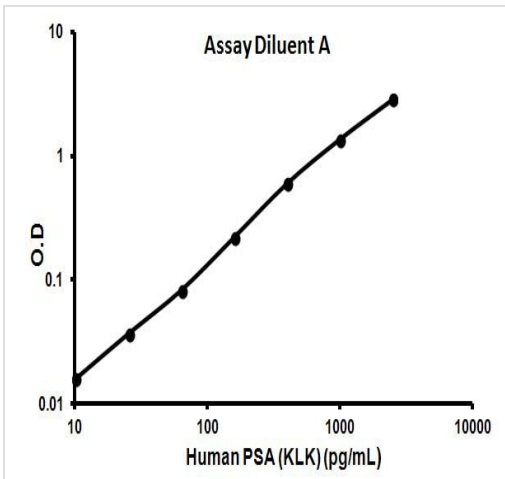
細胞内局在 Secreted.

画像



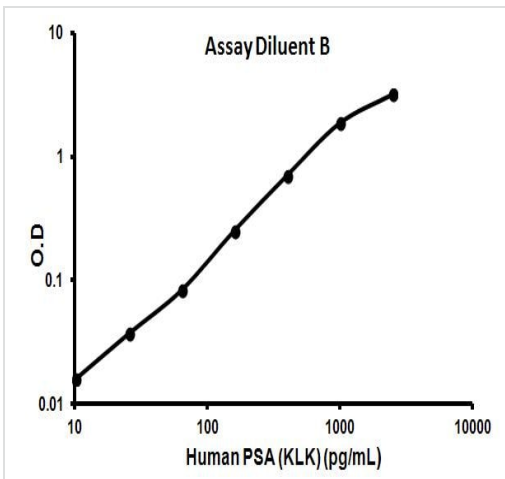
PSA (KLK3) measured in various biological fluids showing quantity (pg) per mL of sample tested

Sandwich ELISA - Human PSA (ab113327)



Representative standard curve using ab113327

Typical Standard Curve



Representative standard curve using ab113327

Typical Standard Curve

Please note: All products are "FOR RESEARCH USE ONLY. NOT FOR USE IN DIAGNOSTIC PROCEDURES"

Our Abpromise to you: Quality guaranteed and expert technical support

- Replacement or refund for products not performing as stated on the datasheet
- Valid for 12 months from date of delivery
- Response to your inquiry within 24 hours

- We provide support in Chinese, English, French, German, Japanese and Spanish
- Extensive multi-media technical resources to help you
- We investigate all quality concerns to ensure our products perform to the highest standards

If the product does not perform as described on this datasheet, we will offer a refund or replacement. For full details of the Abpromise, please visit <https://www.abcam.co.jp/abpromise> or contact our technical team.

Terms and conditions

- Guarantee only valid for products bought direct from Abcam or one of our authorized distributors