

### Human MMP13 ELISA Kit ab100605

★★★★★ [1 Abreviews](#) [19 References](#) [画像数 2](#)

#### 製品の概要

**製品名** Human MMP13 ELISA Kit

**検出方法** Colorimetric

**再現性** Intra-Assay (同時再現性)

サンプル	N	平均値	SD	CV%
Overall				< 10%

Inter-Assay (日差再現性)

サンプル	N	平均値	SD	CV%
Overall				< 12%

**サンプルの種類** Cell culture supernatant, Plasma

**アッセイタイプ** Sandwich (quantitative)

**検出感度** < 6 pg/ml

**検出範囲** 8.23 pg/ml - 6000 pg/ml

**添加回収試験** 93 %

特定サンプルでの回収試験

サンプルの種類	平均 %	測定範囲
Cell culture supernatant	94.72	84% - 103%
Plasma	93.13	83% - 103%

**ステップ** Multiple steps standard assay

**種交差性** 交差種: Human

**製品の概要** Abcam's MMP13 Human ELISA (Enzyme-Linked Immunosorbent Assay) kit is an *in vitro* enzyme linked immunosorbent assay for the quantitative measurement of Human MMP13 in plasma and cell culture supernatants.

This assay employs an antibody specific for Human MMP13 coated on a 96-well plate. Standards and samples are pipetted into the wells and MMP13 present in a sample is bound to the wells by

the immobilized antibody. The wells are washed and biotinylated anti-Human MMP13 antibody is added. After washing away unbound biotinylated antibody, HRP-conjugated streptavidin is pipetted to the wells. The wells are again washed, a TMB substrate solution is added to the wells and color develops in proportion to the amount of MMP13 bound. The Stop Solution changes the color from blue to yellow, and the intensity of the color is measured at 450 nm.

The kit detects total MMP-13 levels.

We have not been able to detect endogenous Human MMP13 in normal serum with ab100605, only in serum spiked with Human MMP13.

**特記事項**

Optimisation may be required with urine samples.

**試験プラットフォーム**

Microplate

**製品の特性**

**保存方法**

Store at -20°C. Please refer to protocols.

内容	1 x 96 tests
20X Wash Buffer	1 x 25ml
5X Assay Diluent	1 x 15ml
700X HRP-Streptavidin Concentrate	1 x 200µl
Biotinylated anti-Human MMP13	2 vials
MMP13 Microplate (12 x 8 wells)	1 unit
Recombinant Human MMP13 Standard (lyophilized)	2 vials
Stop Solution	1 x 8ml
TMB One-Step Substrate Reagent	1 x 12ml

**機能**

Degrades collagen type I. Does not act on gelatin or casein. Could have a role in tumoral process.

**組織特異性**

Seems to be specific to breast carcinomas.

**関連疾患**

Defects in MMP13 are the cause of spondyloepimetaphyseal dysplasia Missouri type (SEMD-MO) [MIM:602111]. A bone disease characterized by moderate to severe metaphyseal changes, mild epiphyseal involvement, rhizomelic shortening of the lower limbs with bowing of the femora and/or tibiae, coxa vara, genu varum and pear-shaped vertebrae in childhood. Epimetaphyseal changes improve with age.

Defects in MMP13 are the cause of metaphyseal anadysplasia type 1 (MANDP1) [MIM:602111]. Metaphyseal anadysplasia consists of an abnormal bone development characterized by severe skeletal changes that, in contrast with the progressive course of most other skeletal dysplasias, resolve spontaneously with age. Clinical characteristics are evident from the first months of life and include slight shortness of stature and a mild varus deformity of the legs. Patients attain a normal stature in adolescence and show improvement or complete resolution of varus deformity of the legs and rhizomelic micromelia.

## 配列類似性

Belongs to the peptidase M10A family.

Contains 4 hemopexin-like domains.

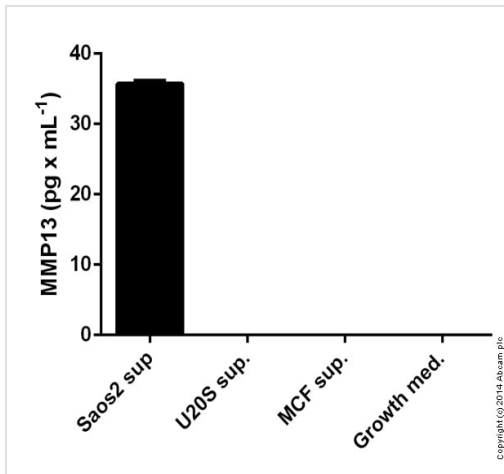
## ドメイン

The conserved cysteine present in the cysteine-switch motif binds the catalytic zinc ion, thus inhibiting the enzyme. The dissociation of the cysteine from the zinc ion upon the activation-peptide release activates the enzyme.

## 細胞内局在

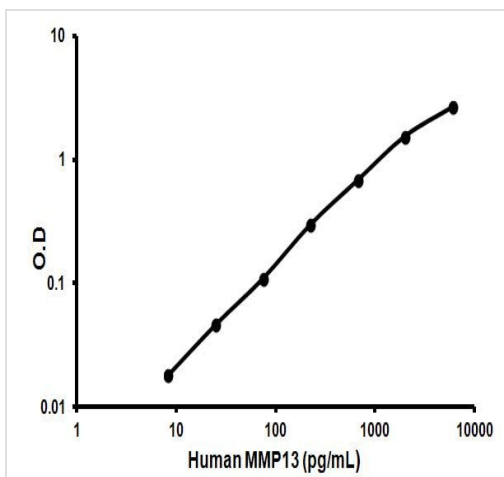
Secreted > extracellular space > extracellular matrix.

## 画像



MMP13 measured in cell supernatanses showing quantity (pg) per mL of tested sample

Sandwich ELISA - MMP13 Human ELISA Kit  
(ab100605)



Representative standard curve using ab100605

Typical Standard Curve

**Please note:** All products are "FOR RESEARCH USE ONLY. NOT FOR USE IN DIAGNOSTIC PROCEDURES"

## Our Abpromise to you: Quality guaranteed and expert technical support

- Replacement or refund for products not performing as stated on the datasheet

- Valid for 12 months from date of delivery
- Response to your inquiry within 24 hours
  
- We provide support in Chinese, English, French, German, Japanese and Spanish
- Extensive multi-media technical resources to help you
- We investigate all quality concerns to ensure our products perform to the highest standards

If the product does not perform as described on this datasheet, we will offer a refund or replacement. For full details of the Abpromise, please visit <https://www.abcam.co.jp/abpromise> or contact our technical team.

### **Terms and conditions**

---

- Guarantee only valid for products bought direct from Abcam or one of our authorized distributors