

Human MCP1 ELISA Kit ab100586

10 References 画像数 3

製品の概要


製品名	Human MCP1 ELISA Kit
検出方法	Colorimetric
サンプルの種類	Cell culture supernatant, Serum, Plasma
アッセイタイプ	Sandwich (quantitative)
検出感度	< 2 pg/ml
検出範囲	2 pg/ml - 500 pg/ml
添加回収試験	93 %

特定サンプルでの回収試験

サンプルの種類	平均 %	測定範囲
Cell culture supernatant	97.62	85% - 104%
Serum	92.65	80% - 102%
Plasma	90.42	79% - 101%

ステップ Multiple steps standard assay

種交差性 交差種: Human

交差が予測される動物種: Mouse, Rat 

製品の概要 Abcam's MCP1 Human ELISA (Enzyme-Linked Immunosorbent Assay) kit is an *in vitro* enzyme-linked immunosorbent assay for the quantitative measurement of Human MCP1 in serum, plasma, and cell culture supernatants.

This assay employs an antibody specific for Human MCP1 coated on a 96-well plate. Standards and samples are pipetted into the wells and MCP1 present in a sample is bound to the wells by the immobilized antibody. The wells are washed and biotinylated anti-Human MCP1 antibody is added. After washing away unbound biotinylated antibody, HRP-conjugated streptavidin is pipetted to the wells. The wells are again washed, a TMB substrate solution is added to the wells and color develops in proportion to the amount of Leptin bound. The Stop Solution changes the color from blue to yellow, and the intensity of the color is measured at 450 nm.

Get higher sensitivity in only 90 minutes with Human MCP1 ELISA Kit (CCL2) ([ab179886](#)) from

	our SimpleStep ELISA® range.
特記事項	Optimization may be required with urine samples.
試験プラットフォーム	Microplate

製品の特性

保存方法 Store at -20°C. Please refer to protocols.

内容	1 x 96 tests
20X Wash Buffer	1 x 25ml
400X HRP-Streptavidin Concentrate	1 x 200µl
5X Assay Diluent	1 x 15ml
Biotinylated anti-Human MCP1	2 vials
MCP1 Microplate (12 x 8 wells)	1 unit
Recombinant Human MCP1 Standard (lyophilized)	2 vials
Stop Solution	1 x 8ml
TMB One-Step Substrate Reagent	1 x 12ml

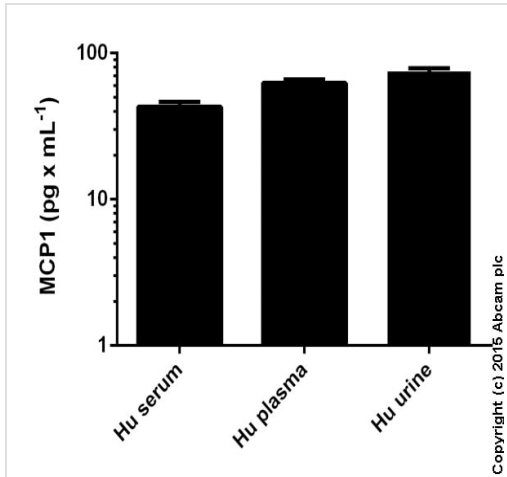
機能 Chemotactic factor that attracts monocytes and basophils but not neutrophils or eosinophils. Augments monocyte anti-tumor activity. Has been implicated in the pathogenesis of diseases characterized by monocytic infiltrates, like psoriasis, rheumatoid arthritis or atherosclerosis. May be involved in the recruitment of monocytes into the arterial wall during the disease process of atherosclerosis.

配列類似性 Belongs to the intercrine beta (chemokine CC) family.

翻訳後修飾 Processing at the N-terminus can regulate receptor and target cell selectivity. Deletion of the N-terminal residue converts it from an activator of basophil to an eosinophil chemoattractant.

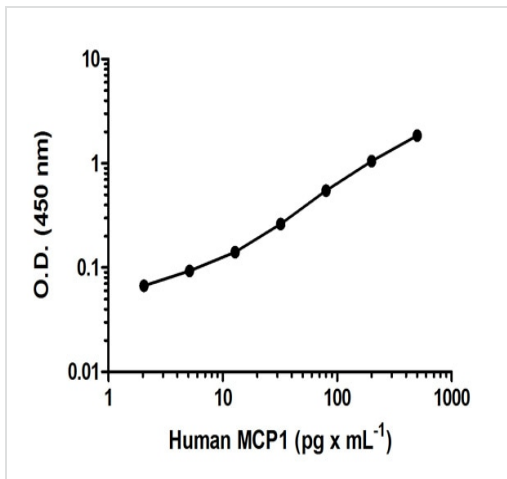
細胞内局在 Secreted.

画像



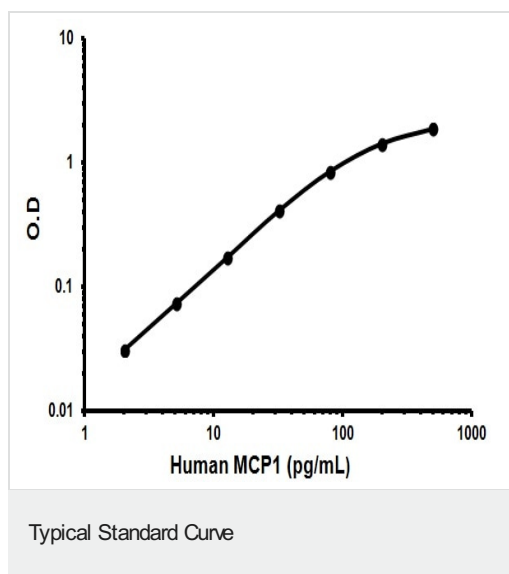
Human MCP1 measured in biological fluids showing quantity (pg) per mL of tested sample. Samples diluted 2-10 fold.

Sandwich ELISA - MCP1 Human ELISA Kit
(ab100586)



Human MCP1 standard curve: mean of duplicates (+/- SD)

Sandwich ELISA - MCP1 Human ELISA Kit
(ab100586)



Representative Standard Curve using ab100586

Please note: All products are "FOR RESEARCH USE ONLY. NOT FOR USE IN DIAGNOSTIC PROCEDURES"

Our Abpromise to you: Quality guaranteed and expert technical support

- Replacement or refund for products not performing as stated on the datasheet
- Valid for 12 months from date of delivery
- Response to your inquiry within 24 hours
- We provide support in Chinese, English, French, German, Japanese and Spanish
- Extensive multi-media technical resources to help you
- We investigate all quality concerns to ensure our products perform to the highest standards

If the product does not perform as described on this datasheet, we will offer a refund or replacement. For full details of the Abpromise, please visit <https://www.abcam.co.jp/abpromise> or contact our technical team.

Terms and conditions

- Guarantee only valid for products bought direct from Abcam or one of our authorized distributors