

Human IL-10 ELISA Kit ab100549

[18 References](#) [画像数 6](#)

製品の概要

製品名 Human IL-10 ELISA Kit

検出方法 Colorimetric

再現性 Intra-Assay (同時再現性)

サンプル	N	平均値	SD	CV%
Overall				< 10%

Inter-Assay (日差再現性)

サンプル	N	平均値	SD	CV%
Overall				< 12%

サンプルの種類 Cell culture supernatant, Serum, Plasma

アッセイタイプ Sandwich (quantitative)

検出感度 < 1 pg/ml

検出範囲 2.34 pg/ml - 150 pg/ml

添加回収試験 100 %

特定サンプルでの回収試験

サンプルの種類	平均 %	測定範囲
Cell culture supernatant	98.37	87% - 110%
Serum	101.94	87% - 108%
Plasma	102.39	93% - 109%

ステップ Multiple steps standard assay

種交差性 交差種: Human

製品の概要 Abcam's IL-10 Human ELISA (Enzyme-Linked Immunosorbent Assay) kit is an *in vitro* enzyme-linked immunosorbent assay for the quantitative measurement of Human IL-10 in serum, plasma and cell culture supernatants.

This assay employs an antibody specific for Human IL-10 coated on a 96-well plate. Standards and samples are pipetted into the wells and IL-10 present in a sample is bound to the wells by the immobilized antibody. The wells are washed and biotinylated anti-Human IL-10 antibody is added. After washing away unbound biotinylated antibody, HRP-conjugated streptavidin is pipetted to the wells. The wells are again washed, a TMB substrate solution is added to the wells and color develops in proportion to the amount of IL-10 bound. The Stop Solution changes the color from blue to yellow, and the intensity of the color is measured at 450 nm.

Get results in 90 minutes with Human IL-10 ELISA Kit ([ab185986](#)) from our SimpleStep ELISA® range.

Produced using a non-baculovirus expression system.

特記事項

Optimization may be required with urine samples

試験プラットフォーム

Microplate

製品の特性

保存方法

Store at -20°C. Please refer to protocols.

内容	1 x 96 tests
200X HRP-Streptavidin Concentrate	1 x 200µl
20X Wash Buffer	1 x 25ml
5X Assay Diluent B	1 x 15ml
Assay Diluent A	1 x 30ml
Biotinylated anti-Human IL-10	2 vials
IL-10 Microplate (12 x 8 wells)	1 unit
Recombinant Human IL-10 Standard (lyophilized)	2 vials
Stop Solution	1 x 8ml
TMB One-Step Substrate Reagent	1 x 12ml

機能

Inhibits the synthesis of a number of cytokines, including IFN-gamma, IL-2, IL-3, TNF and GM-CSF produced by activated macrophages and by helper T-cells.

組織特異性

Produced by a variety of cell lines, including T-cells, macrophages, mast cells and other cell types.

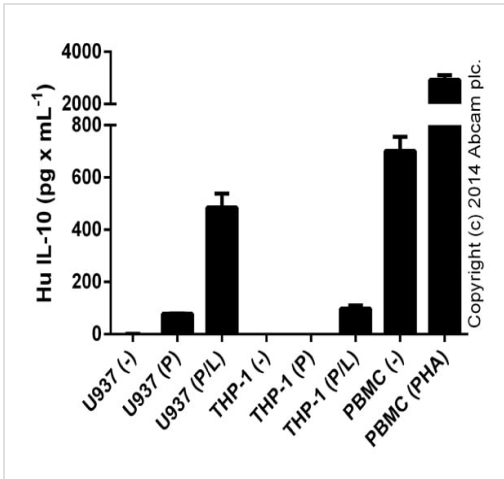
配列類似性

Belongs to the IL-10 family.

細胞内局在

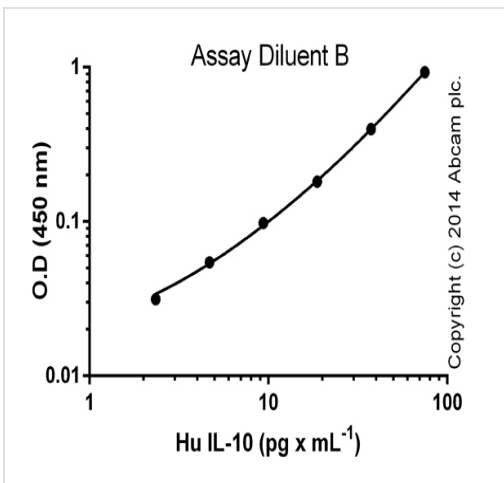
Secreted.

画像



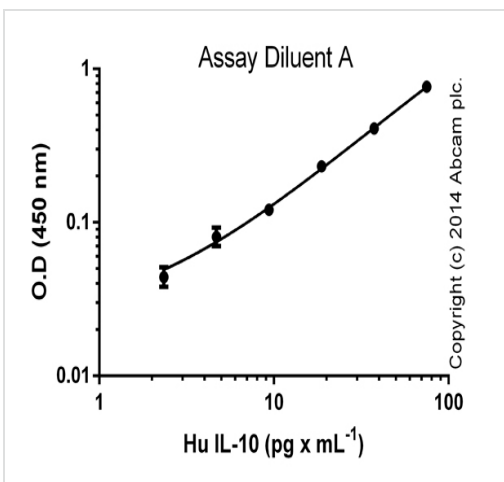
ELISA: IL-10 Human ELISA Kit (ab100549)

IL-10 measured in culture supernatants from control (-) or activated cell lines (dilution range 1/1-1/100), stimulated for 24 hours with 50 ng x mL⁻¹ of PMA (P)([ab120297](#)) and with the addition of 1 ug x mL⁻¹ of LPS (Sigma) (P/L) for the last 6 hours or in PBMC supernatants (dilution range 1/10-1/1000), from control or treated cells ((PHA) 48 hours with 2% PHA-M; LifeTechnologies) (duplicates +/- SD).



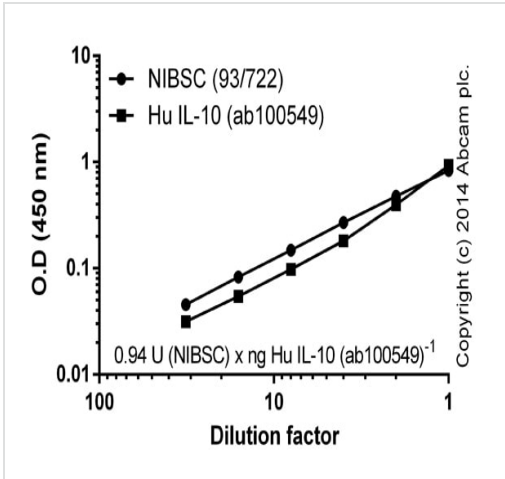
ELISA: IL-10 Human ELISA Kit (ab100549)

Standard curve (assay diluent B) with background signal subtracted (duplicates; +/- SD).



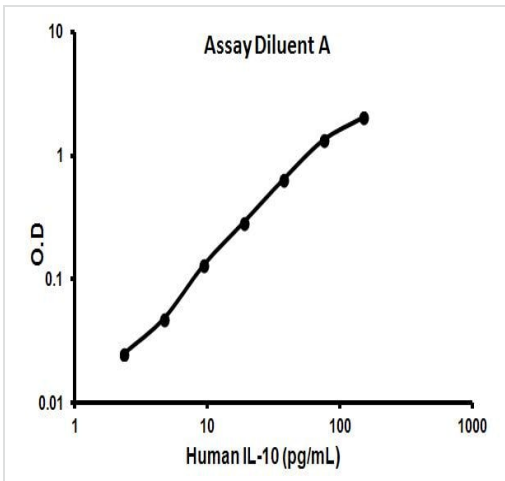
ELISA: IL-10 Human ELISA Kit (ab100549)

Standard curve (assay diluent A) with background signal subtracted (duplicates; +/- SD).



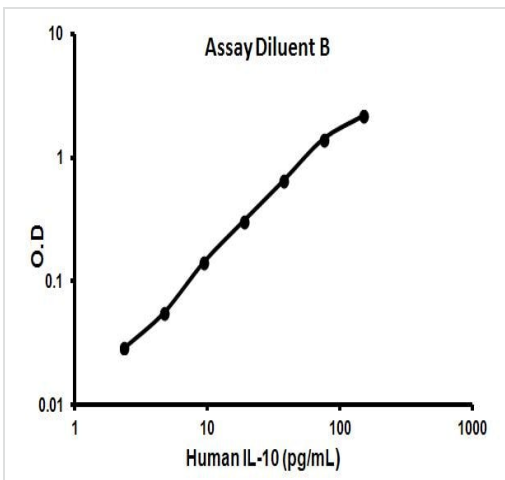
Dilution curves (in assay diluent B) of human IL-10 (ab100549) and NIBSC standard (93/722). One ng of standard IL-10 corresponds to 0.94 (+/- 0.08) U NIBSC standard. Background signal subtracted (duplicates; +/- SD).

ELISA: IL-10 Human ELISA Kit (ab100549)



Representative standard curve using ab100549

Typical Standard Curve



Representative standard curve using ab100549

Typical Standard Curve

Please note: All products are "FOR RESEARCH USE ONLY. NOT FOR USE IN DIAGNOSTIC PROCEDURES"

Our Abpromise to you: Quality guaranteed and expert technical support

- Replacement or refund for products not performing as stated on the datasheet
- Valid for 12 months from date of delivery
- Response to your inquiry within 24 hours

- We provide support in Chinese, English, French, German, Japanese and Spanish
- Extensive multi-media technical resources to help you
- We investigate all quality concerns to ensure our products perform to the highest standards

If the product does not perform as described on this datasheet, we will offer a refund or replacement. For full details of the Abpromise, please visit <https://www.abcam.co.jp/abpromise> or contact our technical team.

Terms and conditions

- Guarantee only valid for products bought direct from Abcam or one of our authorized distributors