

Human IL-1 beta ELISA Kit ab100562

44 References 画像数 3

製品の概要

製品名	Human IL-1 beta ELISA Kit
検出方法	Colorimetric
サンプルの種類	Cell culture supernatant, Plasma
アッセイタイプ	Sandwich (quantitative)
検出感度	< 0.3 pg/ml
検出範囲	0.48 pg/ml - 100 pg/ml
添加回収試験	99 %

特定サンプルでの回収試験

サンプルの種類	平均 %	測定範囲
Cell culture supernatant	100.43	89% - 110%
Plasma	99.66	90% - 107%

ステップ	Multiple steps standard assay
種交差性	交差種: Human
製品の概要	

Human IL-1 beta ELISA (Enzyme-Linked Immunosorbent Assay) kit is an *in vitro* enzyme-linked immunosorbent assay for the quantitative measurement of human IL-1 beta in plasma and cell culture supernatants. (Human IL-1 beta concentration is quite low in normal plasma, it may not be detected in this assay).

This assay employs an antibody specific for human IL-1 beta coated on a 96-well plate. Standards and samples are pipetted into the wells and IL-1 beta present in a sample is bound to the wells by the immobilized antibody. The wells are washed and biotinylated anti-Human IL-1 beta antibody is added. After washing away unbound biotinylated antibody, HRP-conjugated streptavidin is pipetted to the wells. The wells are again washed, a TMB substrate solution is added to the wells and color develops in proportion to the amount of IL-1 beta bound. The Stop Solution changes the color from blue to yellow, and the intensity of the color is measured at 450 nm.

We have not been able to detect the endogenous human IL-1 beta in normal serum with ab100562, only in serum spiked with human IL-1 beta.

特記事項 Optimization may be required with urine samples.

試験プラットフォーム Microplate

製品の特性

保存方法 Store at -20°C. Please refer to protocols.

内容	1 x 96 tests
20X Wash Buffer	1 x 25ml
300X HRP-Streptavidin Concentrate	1 x 200µl
5X Assay Diluent B	1 x 15ml
Assay Diluent A	1 x 30ml
Biotinylated anti-Human IL-1 beta	2 vials
IL-1 beta Microplate (12 x 8 wells)	1 unit
Recombinant Human IL-1 beta Standards (lyophilized)	2 vials
Stop Solution	1 x 8ml
TMB One-Step Substrate Reagent	1 x 12ml

機能 Potent proinflammatory cytokine. Initially discovered as the major endogenous pyrogen, induces prostaglandin synthesis, neutrophil influx and activation, T-cell activation and cytokine production, B-cell activation and antibody production, and fibroblast proliferation and collagen production. Promotes Th17 differentiation of T-cells.

組織特異性 Expressed in activated monocytes/macrophages (at protein level).

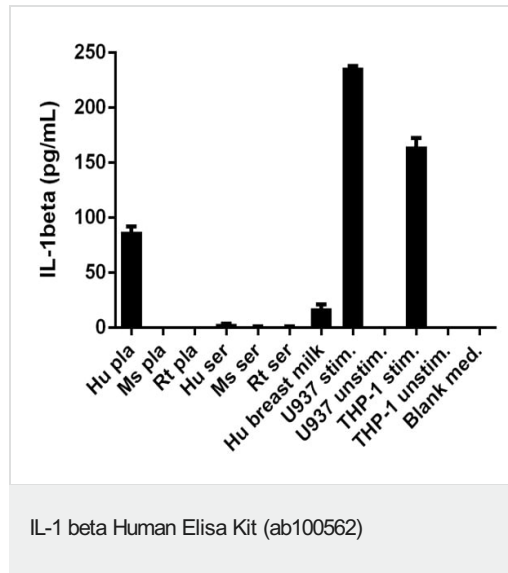
配列類似性 Belongs to the IL-1 family.

翻訳後修飾 Activation of the IL1B precursor involves a CASP1-catalyzed proteolytic cleavage. Processing and secretion are temporarily associated.

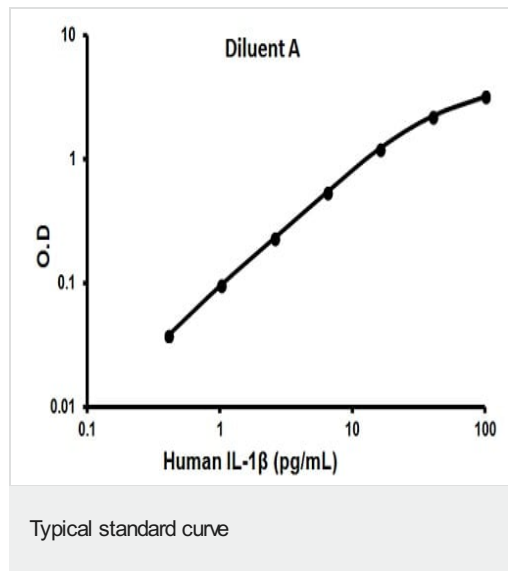
細胞内局在 Cytoplasm, cytosol. Lysosome. Secreted, exosome. Cytoplasmic vesicle, autophagosome. Secreted. The precursor is cytosolic. In response to inflammasome-activating signals, such as ATP for NLRP3 inflammasome or bacterial flagellin for NLRC4 inflammasome, cleaved and secreted. IL1B lacks any known signal sequence and the pathway(s) of its secretion is(are) not yet fully understood (PubMed:24201029). On the basis of experimental results, several unconventional secretion mechanisms have been proposed. 1. Secretion via secretory lysosomes: a fraction of CASP1 and IL1B precursor may be incorporated, by a yet undefined mechanism, into secretory lysosomes that undergo Ca(2+)-dependent exocytosis with release of mature IL1B (PubMed:15192144). 2. Secretory autophagy: IL1B-containing autophagosomes may fuse with endosomes or multivesicular bodies (MVBs) and then merge with the plasma membrane releasing soluble IL1B or IL1B-containing exosomes (PubMed:24201029). However, autophagy impacts IL1B production at several levels and its role in secretion is still controversial. 3. Secretion via exosomes: ATP-activation of P2RX7 leads to the formation of MVBs containing exosomes with entrapped IL1B, CASP1 and other inflammasome components. These MVBs undergo exocytosis with the release of exosomes. The release of soluble IL1B occurs after the

lysis of exosome membranes (By similarity). 4. Secretion by microvesicle shedding: activation of the ATP receptor P2RX7 may induce an immediate shedding of membrane-derived microvesicles containing IL1B and possibly inflammasome components. The cytokine is then released in the extracellular compartment after microvesicle lysis (PubMed:11728343). 5. Release by translocation through permeabilized plasma membrane. This may occur in cells undergoing pyroptosis due to sustained activation of the inflammasome (By similarity). These mechanisms may not be not mutually exclusive.

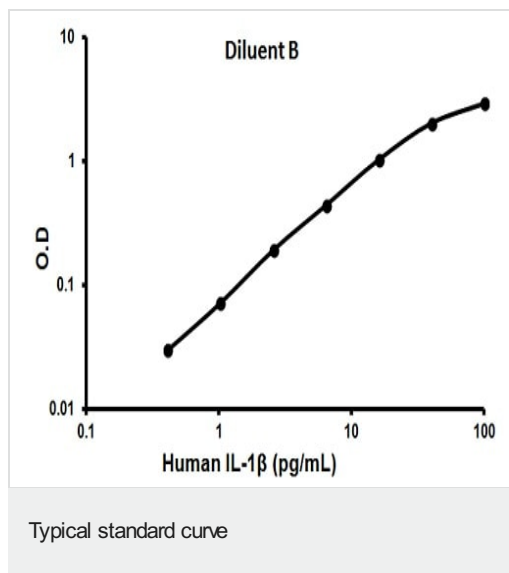
画像



Hu IL-1 beta measured in biological fluids showing quantity (pg) per mL of tested sample (U937: stimulated 24h with 10ng/mL PMA and 6h with LPS 1microgram/mL -- THP-1: stimulated 24h with 10ng/mL PMA)



Representative standard curve using ab100562



Representative standard curve using ab100562

Please note: All products are "FOR RESEARCH USE ONLY. NOT FOR USE IN DIAGNOSTIC PROCEDURES"

Our Abpromise to you: Quality guaranteed and expert technical support

- Replacement or refund for products not performing as stated on the datasheet
- Valid for 12 months from date of delivery
- Response to your inquiry within 24 hours
- We provide support in Chinese, English, French, German, Japanese and Spanish
- Extensive multi-media technical resources to help you
- We investigate all quality concerns to ensure our products perform to the highest standards

If the product does not perform as described on this datasheet, we will offer a refund or replacement. For full details of the Abpromise, please visit <https://www.abcam.co.jp/abpromise> or contact our technical team.

Terms and conditions

- Guarantee only valid for products bought direct from Abcam or one of our authorized distributors