

Human IgG ELISA Kit ab100547

★★★★★ 3 Abreviews 19 References 画像数 2

製品の概要

製品名	Human IgG ELISA Kit
検出方法	Colorimetric
サンプルの種類	Serum, Plasma
アッセイタイプ	Sandwich (quantitative)
検出感度	< 20 pg/ml
検出範囲	0.02 ng/ml - 15 ng/ml
添加回収試験	117 %

特定サンプルでの回収試験

サンプルの種類	平均 %	測定範囲
Serum	116.1	105% - 123%
Plasma	118.1	99% - 126%

ステップ	Multiple steps standard assay
種交差性	交差種: Human
製品の概要	Human IgG ELISA kit is designed for the quantitative measurement of Human IgG in serum and plasma.

特記事項	<p>The Human immune system consists of two functional components classified as the innate system (the physical, biochemical and cellular barriers), and the adaptive immune system (including lymphocytes and immunoglobulins). Immunoglobulins are the key elements of the humoral immune response in vertebrate against parasitic invasion.</p> <p>The polypeptide chains of immunoglobulins composed of two identical heavy (H) chains and two identical light (L) chains linked together by inter-chain disulfide bonds. While the amino-terminal portions that exhibits highly variable amino-acid composition are involved in antigen binding, the C terminal constant parts are involved in complement binding, placental passage and binding to cell membranes. Based upon the variation of the constant region of the heavy chain, nine immunoglobulin heavy chain isotypes are found in humans: IgA (with subclasses IgA1 and IgA2), IgD, IgE, IgM, and IgG (with subclasses IgG1, IgG2, IgG3, and IgG4).</p>
------	---

IgG is the predominant immunoglobulin in the serum, which accounts for 75% of the total serum antibody of healthy individuals. IgG has a molecular weight of about 150 kDa. Four distinct subgroups of human IgG (IgG1, IgG2, IgG3, and IgG4) were first demonstrated in the 1960's by using polyclonal antisera prepared in animals immunized with human myeloma proteins.

The capture antibody of the kit ab100547 detects the Fc portion of the heavy chain of all subclasses of human IgG and the detection antibody detects the F(ab')<sub>2</sub> fragment of IgG.

## 試験プラットフォーム

Microplate

## 製品の特性

### 保存方法

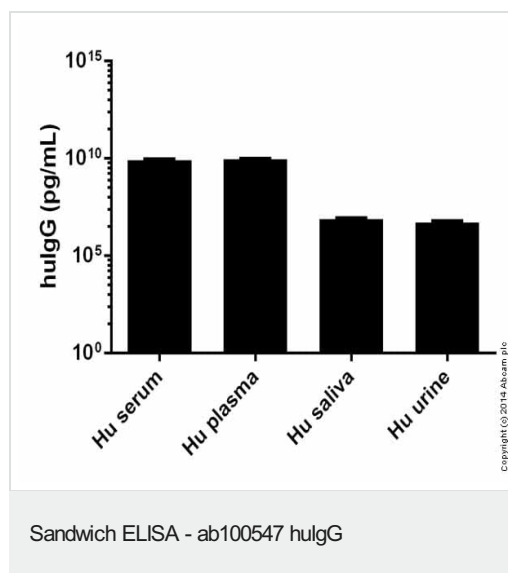
Store at -20°C. Please refer to protocols.

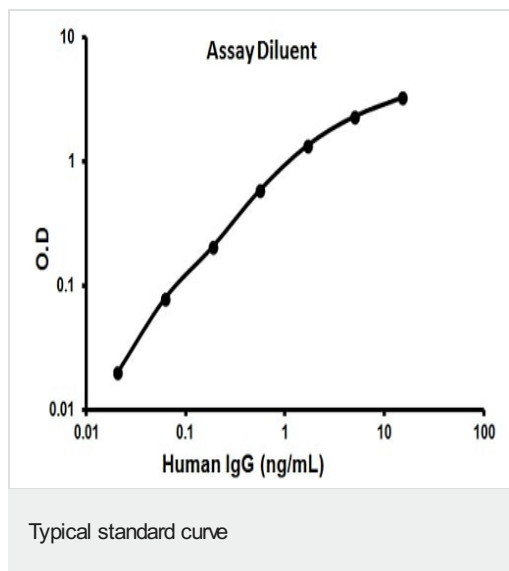
内容	1 x 96 tests
20X Wash Buffer	1 x 25ml
4,000X HRP-Streptavidin Concentrate	1 x 200µl
5X Assay Diluent	2 x 15ml
Biotinylated anti-Human IgG	2 vials
IgG Microplate (12 x 8 wells)	1 unit
Recombinant Human IgG Standard (lyophilized)	2 vials
Stop Solution	1 x 8ml
TMB One-Step Substrate Reagent	1 x 12ml

## 細胞内局在

Secreted

## 画像





Representative standard curve using ab100547

**Please note:** All products are "FOR RESEARCH USE ONLY. NOT FOR USE IN DIAGNOSTIC PROCEDURES"

### Our Abpromise to you: Quality guaranteed and expert technical support

---

- Replacement or refund for products not performing as stated on the datasheet
- Valid for 12 months from date of delivery
- Response to your inquiry within 24 hours
- We provide support in Chinese, English, French, German, Japanese and Spanish
- Extensive multi-media technical resources to help you
- We investigate all quality concerns to ensure our products perform to the highest standards

If the product does not perform as described on this datasheet, we will offer a refund or replacement. For full details of the Abpromise, please visit <https://www.abcam.co.jp/abpromise> or contact our technical team.

### Terms and conditions

---

- Guarantee only valid for products bought direct from Abcam or one of our authorized distributors