

Human FGF-21 ELISA Kit ab125966

6 References 画像数 2

製品の概要

製品名	Human FGF-21 ELISA Kit			
検出方法	Colorimetric			
再現性	Intra-Assay (同時再現性)			
	サンプル	N	平均値	SD
	Overall			CV%
				4.7%
	Inter-Assay (日差再現性)			
	サンプル	N	平均値	SD
	Overall			CV%
				7.2%
サンプルの種類	Cell culture supernatant, Serum, Plasma			
アッセイタイプ	Sandwich (quantitative)			
検出感度	0.03 ng/ml			
検出範囲	0.031 ng/ml - 2 ng/ml			
添加回収試験	97 %			
全工程の試験時間	5h 00m			
ステップ	Multiple steps standard assay			
種交差性	交差種: Human			
製品の概要	Abcam's FGF-21 Human <i>in vitro</i> ELISA (Enzyme-Linked Immunosorbent Assay) kit is designed for the quantitative measurement of Human FGF-21 in plasma, serum, and cell culture supernatants.			

A FGF-21 specific antibody has been precoated onto 96-well plates and blocked. Standards or test samples are added to the wells and subsequently a FGF-21 specific biotinylated detection antibody is added and then followed by washing with wash buffer. Streptavidin-Peroxidase Conjugate is added and unbound conjugates are washed away with wash buffer. TMB is then used to visualize Streptavidin-Peroxidase enzymatic reaction. TMB is catalyzed by Streptavidin-Peroxidase to produce a blue color product that changes into yellow after adding acidic stop solution. The density of yellow coloration is directly proportional to the amount of FGF-21 captured in plate.

The entire kit may be stored at -20°C for long term storage before reconstitution - Avoid repeated freeze-thaw cycles.

試験プラットフォーム

Microplate

製品の特性

保存方法

Store at -20°C. Please refer to protocols.

内容	1 x 96 tests
100X Streptavidin-Peroxidase Conjugate	1 x 80µl
10X Diluent N Concentrate	1 x 30ml
1X Standard Diluent	1 x 2ml
20X Wash Buffer Concentrate	2 x 30ml
50X Biotinylated Human FGF-21 Antibody	1 x 120µl
Chromogen Substrate	1 x 7ml
FGF-21 Microplate (12 x 8 well strips)	1 unit
FGF-21 Standard	1 vial
Sealing Tapes	3 units
Stop Solution	1 x 11ml

機能

Stimulates glucose uptake in differentiated adipocytes via the induction of glucose transporter SLC2A1/GLUT1 expression (but not SLC2A4/GLUT4 expression). Activity requires the presence of KLB.

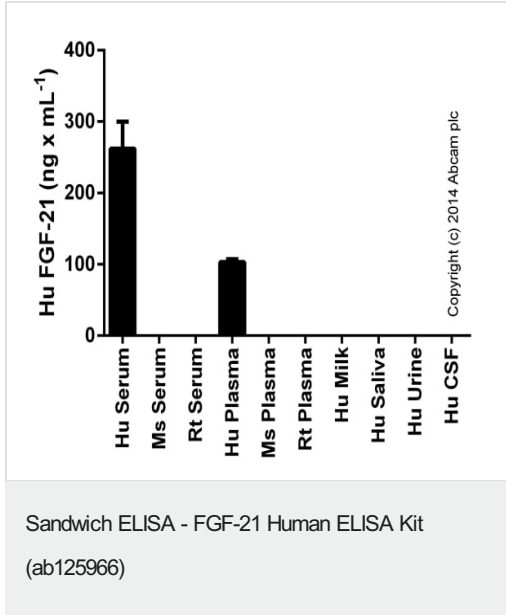
配列類似性

Belongs to the heparin-binding growth factors family.

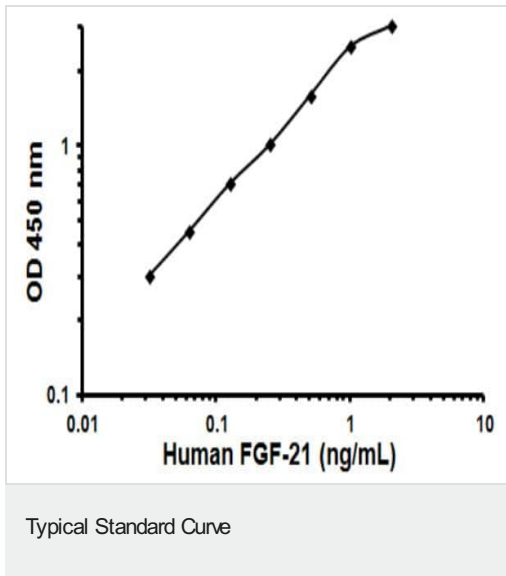
細胞内局在

Secreted.

画像



FGF-21 measured in biological fluids, background signal subtracted (duplicates +/- SD).



Representative Standard Curve using ab125966

Please note: All products are "FOR RESEARCH USE ONLY. NOT FOR USE IN DIAGNOSTIC PROCEDURES"

Our Abpromise to you: Quality guaranteed and expert technical support

- Replacement or refund for products not performing as stated on the datasheet
- Valid for 12 months from date of delivery

- Response to your inquiry within 24 hours
- We provide support in Chinese, English, French, German, Japanese and Spanish
- Extensive multi-media technical resources to help you
- We investigate all quality concerns to ensure our products perform to the highest standards

If the product does not perform as described on this datasheet, we will offer a refund or replacement. For full details of the Abpromise, please visit <https://www.abcam.co.jp/abpromise> or contact our technical team.

Terms and conditions

- Guarantee only valid for products bought direct from Abcam or one of our authorized distributors