

### Human Factor X ELISA Kit ab108832

2 References [画像数 4](#)

#### 製品の概要

製品名	Human Factor X ELISA Kit										
検出方法	Colorimetric										
再現性	Intra-Assay (同時再現性)										
	<table border="1"> <thead> <tr> <th>サンプル</th> <th>N</th> <th>平均値</th> <th>SD</th> <th>CV%</th> </tr> </thead> <tbody> <tr> <td>Overall</td> <td></td> <td></td> <td></td> <td>3.8%</td> </tr> </tbody> </table>	サンプル	N	平均値	SD	CV%	Overall				3.8%
サンプル	N	平均値	SD	CV%							
Overall				3.8%							
	Inter-Assay (日差再現性)										
	<table border="1"> <thead> <tr> <th>サンプル</th> <th>N</th> <th>平均値</th> <th>SD</th> <th>CV%</th> </tr> </thead> <tbody> <tr> <td>Overall</td> <td></td> <td></td> <td></td> <td>8.8%</td> </tr> </tbody> </table>	サンプル	N	平均値	SD	CV%	Overall				8.8%
サンプル	N	平均値	SD	CV%							
Overall				8.8%							
サンプルの種類	Saliva, Milk, Urine, Serum, Plasma, Cerebral Spinal Fluid										
アッセイタイプ	Sandwich (quantitative)										
検出感度	= 1.5 ng/ml										
検出範囲	0.781 ng/ml - 50 ng/ml										
添加回収試験	97.5 %										
全工程の試験時間	4h 00m										
ステップ	Multiple steps standard assay										
種交差性	交差種: Human										
製品の概要	<p>Abcam's Human Factor X <i>in vitro</i> ELISA (Enzyme-Linked Immunosorbent Assay) kit is designed for the quantitative measurement of Factor X concentrations in plasma, serum, milk, urine, saliva, and cerebrospinal fluid.</p> <p>A Factor X specific antibody has been precoated onto 96-well plates and blocked. Standards or test samples are added to the wells and subsequently a Factor X specific biotinylated detection antibody is added and then followed by washing with wash buffer. Streptavidin-Peroxidase Complex is added and unbound conjugates are washed away with wash buffer. TMB is then used to visualize Streptavidin-Peroxidase enzymatic reaction. TMB is catalyzed by Streptavidin-Peroxidase to produce a blue color product that changes into yellow after adding acidic stop solution. The density of yellow coloration is directly proportional to the amount of Factor X captured in plate.</p>										

The entire kit may be stored at -20°C for long term storage before reconstitution - Avoid repeated freeze-thaw cycles.

試験プラットフォーム

Microplate

## 製品の特性

保存方法

Store at -20°C. Please refer to protocols.

内容	1 x 96 tests
100X Biotinylated Antibody	1 x 60µl
100X Streptavidin-Peroxidase Conjugate	1 x 80µl
10X Diluent N Concentrate	1 x 30ml
20X Wash Buffer Concentrate	2 x 30ml
Chromogen Substrate	1 x 7ml
Factor X Microplate (12 x 8 well strips)	1 unit
Factor X Standard	1 x 65ng
Sealing Tapes	3 units
Stop Solution	1 x 11ml

機能

Factor Xa is a vitamin K-dependent glycoprotein that converts prothrombin to thrombin in the presence of factor Va, calcium and phospholipid during blood clotting.

組織特異性

Plasma; synthesized in the liver.

関連疾患

Defects in F10 are the cause of factor X deficiency (FA10D) [MIM:227600]. A hemorrhagic disease with variable presentation. Affected individuals can manifest prolonged nasal and mucosal hemorrhage, menorrhagia, hematuria, and occasionally hemarthrosis. Some patients do not have clinical bleeding diathesis.

配列類似性

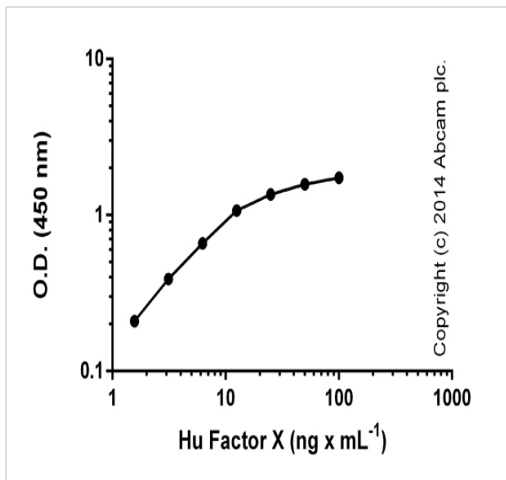
Belongs to the peptidase S1 family.  
Contains 2 EGF-like domains.  
Contains 1 Gla (gamma-carboxy-glutamate) domain.  
Contains 1 peptidase S1 domain.

翻訳後修飾

The vitamin K-dependent, enzymatic carboxylation of some glutamate residues allows the modified protein to bind calcium.  
N- and O-glycosylated.  
The activation peptide is cleaved by factor IXa (in the intrinsic pathway), or by factor VIIa (in the extrinsic pathway).  
The iron and 2-oxoglutarate dependent 3-hydroxylation of aspartate and asparagine is (R) stereospecific within EGF domains.

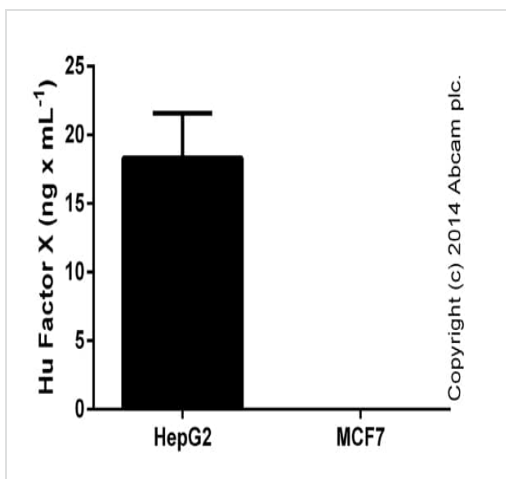
細胞内局在

Secreted.



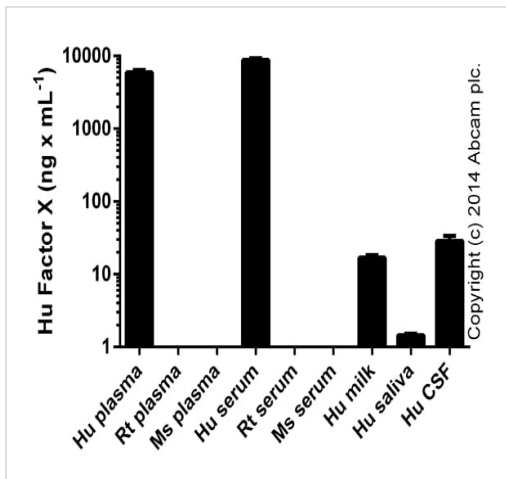
Standard curve with background signal subtracted (duplicates; +/- SD).

ELISA: Factor X Human ELISA kit (ab108832)



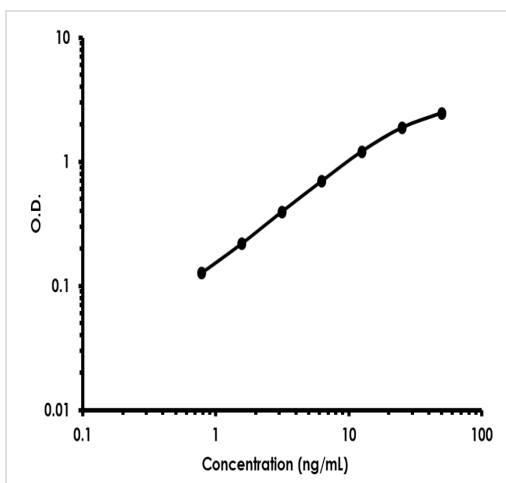
Factor X measured in undiluted culture supernatants with MCF7 levels below level of detection (duplicates +/- SD).

ELISA: Factor X Human ELISA kit (ab108832)



Factor X measured in biological fluids (duplicates +/- SD). Serum and plasma were tested at 1/300-1/3000; other samples at 1/1-1/30.

ELISA: Factor X Human ELISA kit (ab108832)



Representative Standard Curve using ab108832

Typical Standard Curve

**Please note:** All products are "FOR RESEARCH USE ONLY. NOT FOR USE IN DIAGNOSTIC PROCEDURES"

### Our Abpromise to you: Quality guaranteed and expert technical support

- Replacement or refund for products not performing as stated on the datasheet
- Valid for 12 months from date of delivery
- Response to your inquiry within 24 hours
- We provide support in Chinese, English, French, German, Japanese and Spanish
- Extensive multi-media technical resources to help you
- We investigate all quality concerns to ensure our products perform to the highest standards

If the product does not perform as described on this datasheet, we will offer a refund or replacement. For full details of the Abpromise, please visit <https://www.abcam.co.jp/abpromise> or contact our technical team.

### Terms and conditions

- Guarantee only valid for products bought direct from Abcam or one of our authorized distributors