

Human ENO1 ELISA Kit (Alpha-Enolase) ab181417

SimpleStep ELISA

画像数 6

製品の概要

製品名 Human ENO1 ELISA Kit (Alpha-Enolase)

検出方法 Colorimetric

再現性 Intra-Assay (同時再現性)

サンプル	N	平均値	SD	CV%
HeLa extract	8			6.5%

Inter-Assay (日差再現性)

サンプル	N	平均値	SD	CV%
HeLa extract	3			11.4%

サンプルの種類 Serum, Cell culture extracts, Tissue Extracts

アッセイタイプ Sandwich (quantitative)

検出感度 6.5 U/ml

検出範囲 27.85 U/ml - 800 U/ml

添加回収試験 90.1 %

特定サンプルでの回収試験

サンプルの種類	平均 %	測定範囲
Serum	101	100% - 103%
Cell culture extracts	93	92% - 93%
Tissue Extracts	104	99% - 113%

全工程の試験時間 1h 30m

ステップ One step assay

種交差性 交差種: Human

製品の概要 Human ENO1 ELISA kit (ab181417) is a single-wash 90 min sandwich ELISA designed for the

quantitative measurement of ENO1 protein in human serum, cell and tissue extracts. It uses our proprietary SimpleStep ELISA® technology. Quantitate human ENO1 with 6.5 U/mL sensitivity.

SimpleStep ELISA® technology employs capture antibodies conjugated to an affinity tag that is recognized by the monoclonal antibody used to coat our SimpleStep ELISA® plates. This approach to sandwich ELISA allows the formation of the antibody-analyte sandwich complex in a single step, significantly reducing assay time. See the SimpleStep ELISA® protocol summary in the image section for further details. Our SimpleStep ELISA® technology provides several benefits:

- Single-wash protocol reduces assay time to 90 minutes or less
- High sensitivity, specificity and reproducibility from superior antibodies
- Fully validated in biological samples
- 96-wells plate breakable into 12 x 8 wells strips

A 384-well SimpleStep ELISA® microplate ([ab203359](#)) is available to use as an alternative to the 96-well microplate provided with SimpleStep ELISA® kits.

特記事項

Alpha enolase (ENO1, P06733) ENO1 is localized to cytoplasm. It can translocate to the plasma membrane in either the homodimeric (alpha/alpha) or heterodimeric (alpha/gamma) form. MBP1, a shorter isoform of the ENO1, binds to the myc promoter and acts as a transcriptional repressor. It may be a tumor suppressor. It locates mainly in nucleus. ENO1 is used as a diagnostic marker for many tumors and, in the heterodimeric form, alpha/gamma, as a marker for hypoxic brain injury after cardiac arrest. Also it is a marker for endometriosis. Antibodies against ENO1 are present in sera from patients with cancer-associated retinopathy syndrome (CAR), a progressive blinding disease which occurs in the presence of systemic tumor growth, primarily small-cell carcinoma of the lung and other malignancies. ENO1 is identified as an autoantigen in Hashimoto encephalopathy (HE) a rare autoimmune disease associated with Hashimoto thyroiditis (HT). HT is a disorder in which destructive processes overcome the potential capacity of thyroid replacement leading to hypothyroidism.

Abcam has not and does not intend to apply for the REACH Authorisation of customers' uses of products that contain European Authorisation list (Annex XIV) substances.

It is the responsibility of our customers to check the necessity of application of REACH Authorisation, and any other relevant authorisations, for their intended uses.

試験プラットフォーム

Microplate

製品の特性

保存方法

Store at +4°C. Please refer to protocols.

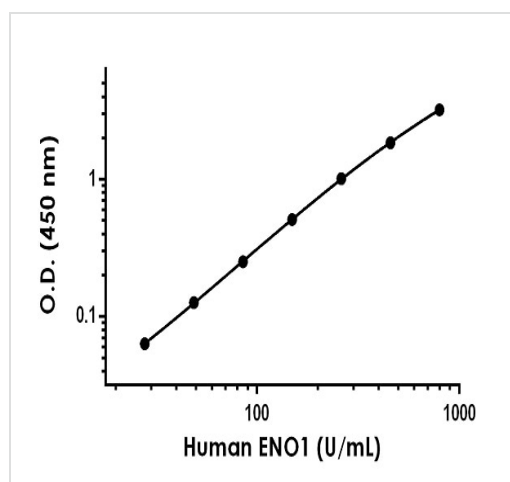
内容	1 x 96 tests
10X Human ENO1 Capture Antibody	1 x 600µl
10X Human ENO1 Detector Antibody	1 x 600µl
10X Wash Buffer PT (ab206977)	1 x 20ml
50X Cell Extraction Enhancer Solution (ab193971)	1 x 1ml

内容	1 x 96 tests
5X Cell Extraction Buffer PTR (ab193970)	1 x 10ml
Antibody Diluent CPI2	1 x 6ml
Human ENO1 Lyophilized Recombinant Protein	2 vials
Plate Seal	1 unit
Sample Diluent NS (ab193972)	1 x 12ml
SimpleStep Pre-Coated 96-Well Microplate (ab206978)	1 unit
Stop Solution	1 x 12ml
TMB Development Solution	1 x 12ml

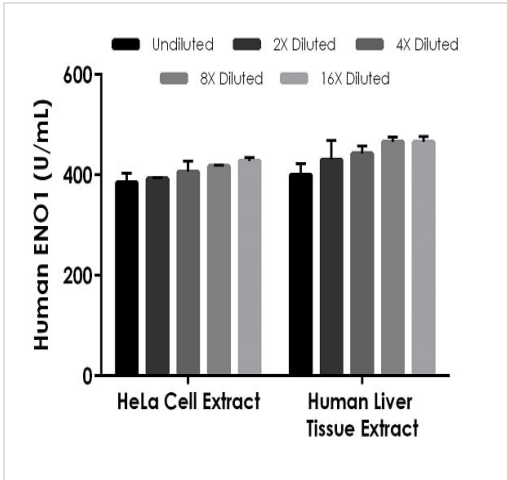
細胞内局在

Cytoplasm. Cell membrane. Cytoplasm › myofibril › sarcomere › M line. Note: Can translocate to the plasma membrane in either the homodimeric (alpha/alpha) or heterodimeric (alpha/gamma) form. ENO1 is localized to the M line.

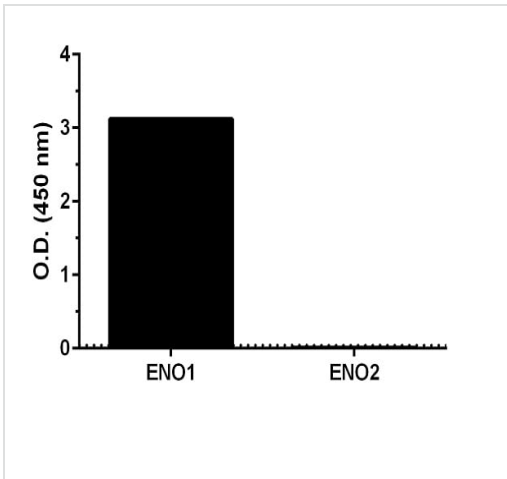
画像



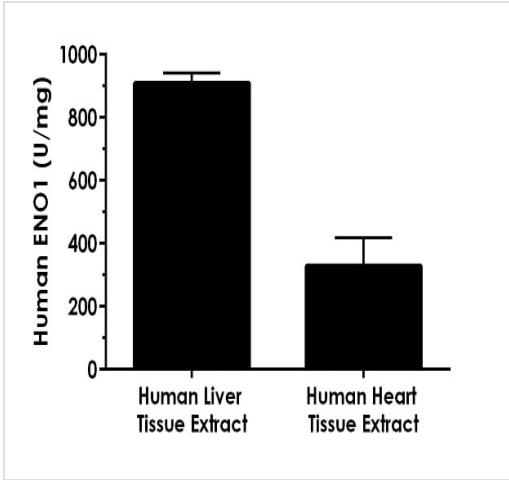
Example of human ENO1 standard curve in 1X Cell Extraction Buffer PTR.



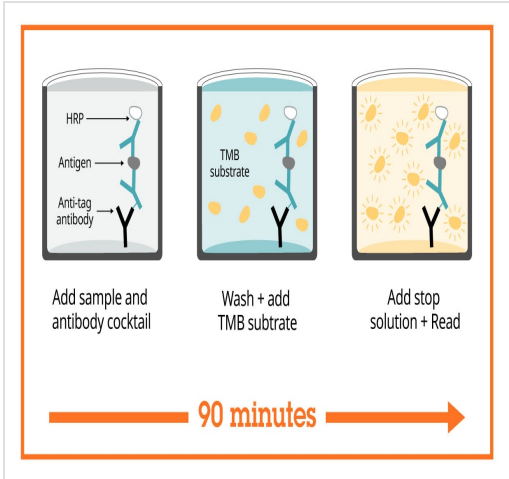
Interpolated concentrations of native ENO1 in human HeLa cell extract based on a 50 µg/mL extract load and human liver tissue extract based on a 286 µg/mL extract load.



Human recombinant ENO1 protein (600 ng/mL) and neuron-specific human recombinant ENO2 protein (600 ng/mL) were analyzed with this kit.



Extracts of human liver and human heart were analyzed with this kit.



Sandwich ELISA - Human ENO1 ELISA Kit (Alpha-Enolase) (ab181417)

SimpleStep ELISA technology allows the formation of the antibody-antigen complex in one single step, reducing assay time to 90 minutes. Add samples or standards and antibody mix to wells all at once, incubate, wash, and add your final substrate. See protocol for a detailed step-by-step guide.

Get more done with SimpleStep ELISA



Easy to use
Single-wash 90-minute protocol



Flexible
Matched antibody pairs available



Precision antibodies
High sensitivity, specificity and reproducibility



Scalable
Now in 10-pack and 384-well formats

To learn more about the advantages of SimpleStep ELISA® kits see [here](#).

Sandwich ELISA - Human ENO1 ELISA Kit (Alpha-Enolase) (ab181417)

Please note: All products are "FOR RESEARCH USE ONLY. NOT FOR USE IN DIAGNOSTIC PROCEDURES"

Our Abpromise to you: Quality guaranteed and expert technical support

- Replacement or refund for products not performing as stated on the datasheet
- Valid for 12 months from date of delivery
- Response to your inquiry within 24 hours
- We provide support in Chinese, English, French, German, Japanese and Spanish
- Extensive multi-media technical resources to help you
- We investigate all quality concerns to ensure our products perform to the highest standards

If the product does not perform as described on this datasheet, we will offer a refund or replacement. For full details of the Abpromise, please visit <https://www.abcam.co.jp/abpromise> or contact our technical team.

Terms and conditions

- Guarantee only valid for products bought direct from Abcam or one of our authorized distributors