

Human Endostatin ELISA Kit ab184864

SimpleStep ELISA

画像数 5

製品の概要

製品名	Human Endostatin ELISA Kit				
検出方法	Colorimetric				
再現性	Intra-Assay (同時再現性)				
サンプル		N	平均値	SD	CV%
Serum		5			6.9%
					Inter-Assay (日差再現性)
サンプル		N	平均値	SD	CV%
Serum		3			7.1%
サンプルの種類	Serum, Plasma				
アッセイタイプ	Sandwich (quantitative)				
検出感度	7.7 pg/ml				
検出範囲	32 pg/ml - 2000 pg/ml				
添加回収試験	特定サンプルでの回収試験				
サンプルの種類			平均 %	測定範囲	
Serum			106	99% - 114%	
Plasma			105	104% - 107%	
Cell culture media			88	87% - 88%	
全工程の試験時間	1h 30m				
ステップ	One step assay				
種交差性	交差種: Human				
製品の概要	Human Endostatin ELISA kit (ab184864) is a single-wash 90 min sandwich ELISA designed for the quantitative measurement of Endostatin protein in human serum and plasma samples. It uses				

our proprietary SimpleStep ELISA® technology. Quantitate human Endostatin with 7.7 pg/mL sensitivity.

SimpleStep ELISA® technology employs capture antibodies conjugated to an affinity tag that is recognized by the monoclonal antibody used to coat our SimpleStep ELISA® plates. This approach to sandwich ELISA allows the formation of the antibody-analyte sandwich complex in a single step, significantly reducing assay time. See the SimpleStep ELISA® protocol summary in the image section for further details. Our SimpleStep ELISA® technology provides several benefits:

- Single-wash protocol reduces assay time to 90 minutes or less
- High sensitivity, specificity and reproducibility from superior antibodies
- Fully validated in biological samples
- 96-wells plate breakable into 12 x 8 wells strips

A 384-well SimpleStep ELISA® microplate (**ab203359**) is available to use as an alternative to the 96-well microplate provided with SimpleStep ELISA® kits.

特記事項

Endostatin (20-22 kDa), a cleaved product of the C-terminal domain of collagen XVIII, is an endogenous angiogenesis inhibitor. It was originally found in conditioned media from a murine endothelial tumor cell line, hemangioendothelioma. Endostatin inhibits endothelial cell migration (in vivo and in vitro) and induces endothelial cell apoptosis. It inhibits tumor growth and impairs blood vessel maturation in wound healing. Endostatin has an important role in endothelial cell adhesion and cytoskeletal organization. Endostatin can be found in vessel walls (elastic fibers) and basement membranes.

試験プラットフォーム

Microplate

製品の特性

保存方法

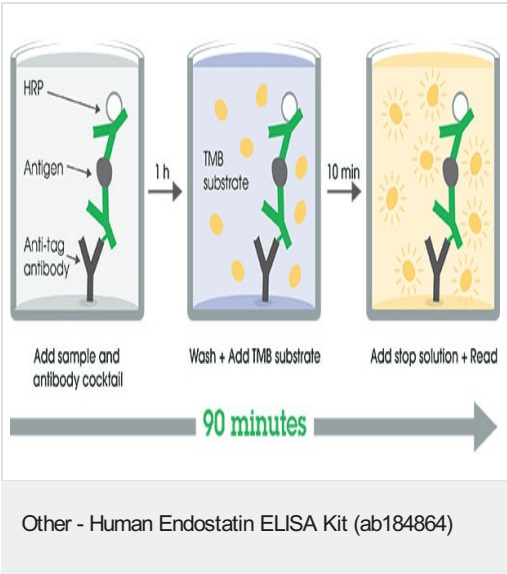
Store at +4°C. Please refer to protocols.

内容	1 x 96 tests
10X Human Endostatin Capture Antibody	1 x 600µl
10X Human Endostatin Detector Antibody	1 x 600µl
10X Wash Buffer PT (ab206977)	1 x 20ml
Antibody Diluent CPI - HAMA Blocker (ab193969)	1 x 6ml
Human Endostatin Lyophilized Recombinant Protein	2 vials
Plate Seals	1 unit
Sample Diluent NS (ab193972)	1 x 50ml
SimpleStep Pre-Coated 96-Well Microplate (ab206978)	1 unit
Stop Solution	1 x 12ml
TMB Development Solution	1 x 12ml

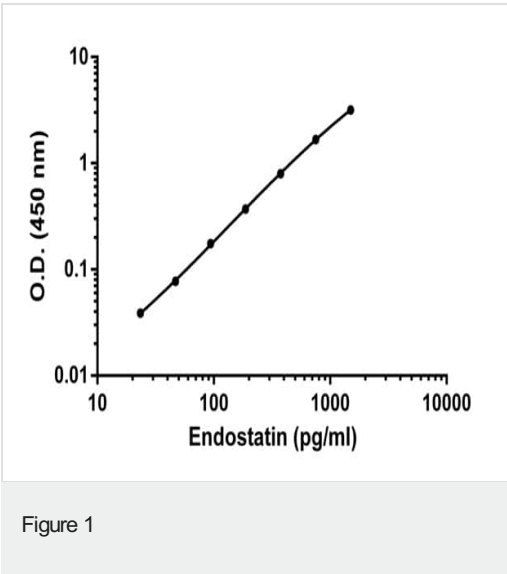
関連性

Endostatin (20-22 kDa), a cleaved product of the C-terminal domain of collagen XVIII, is an endogenous angiogenesis inhibitor. It was originally found in conditioned media from a murine endothelial tumor cell line, hemangioendothelioma. Endostatin inhibits endothelial cell migration (in vivo and in vitro) and induces endothelial cell apoptosis. It inhibits tumor growth and impairs blood vessel maturation in wound healing. Endostatin has an important role in endothelial cell adhesion and cytoskeletal organization. Endostatin can be found in vessel walls (elastic fibers) and basement membranes.

画像



SimpleStep ELISA technology allows the formation of the antibody-antigen complex in one single step, reducing assay time to 90 minutes. Add samples or standards and antibody mix to wells all at once, incubate, wash, and add your final substrate. See protocol for a detailed step-by-step guide.



Example of Endostatin standard curve. Raw data values are shown in the table. Background-subtracted data values (mean +/- SD) are graphed.

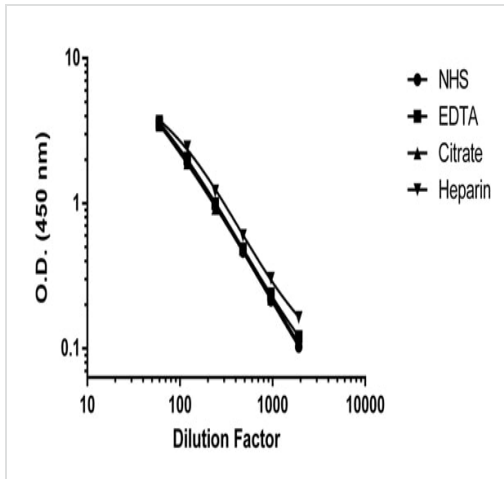


Figure 2a

Titration of normal Human serum and plasma samples to within working range of the assay. Background subtracted data from duplicate measurements are plotted.

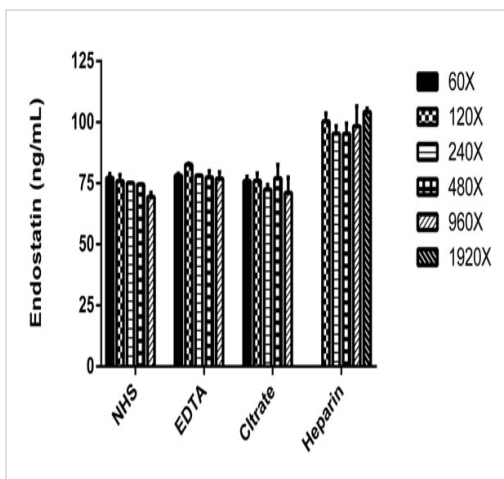
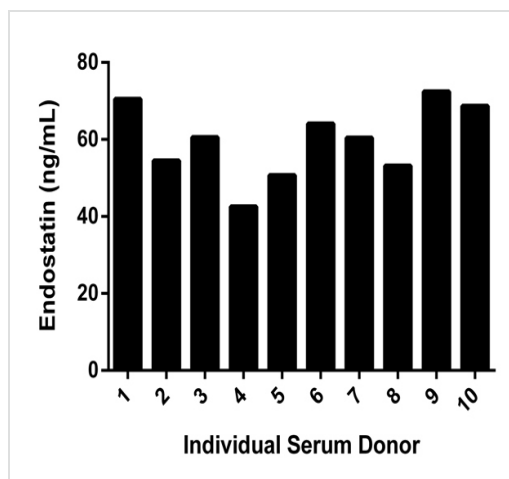


Figure 2b

Titration of normal Human serum and plasma samples to within working range of the assay. Bar graph denotes quantification of Endostatin interpolated from standard curve and multiplied by dilution factor.



Titration of individual donor serum samples to within working range of the assay. Quantification of Endostatin interpolated from standard curve and multiplied by dilution factor.

Figure 3

Please note: All products are "FOR RESEARCH USE ONLY. NOT FOR USE IN DIAGNOSTIC PROCEDURES"

Our Abpromise to you: Quality guaranteed and expert technical support

- Replacement or refund for products not performing as stated on the datasheet
- Valid for 12 months from date of delivery
- Response to your inquiry within 24 hours
- We provide support in Chinese, English, French, German, Japanese and Spanish
- Extensive multi-media technical resources to help you
- We investigate all quality concerns to ensure our products perform to the highest standards

If the product does not perform as described on this datasheet, we will offer a refund or replacement. For full details of the Abpromise, please visit <https://www.abcam.co.jp/abpromise> or contact our technical team.

Terms and conditions

- Guarantee only valid for products bought direct from Abcam or one of our authorized distributors