



Product datasheet

Human Complement C6 ELISA Kit ab125965

画像数 3

製品の概要

製品名	Human Complement C6 ELISA Kit			
検出方法	Colorimetric			
再現性	Intra-Assay (同時再現性)			
	サンプル	N	平均値	SD
	Overall			CV%
				4.7%
	Inter-Assay (日差再現性)			
	サンプル	N	平均値	SD
	Overall			CV%
				8.9%
サンプルの種類	Cell culture supernatant, Saliva, Milk, Urine, Serum, Plasma, Cerebral Spinal Fluid			
アッセイタイプ	Sandwich (quantitative)			
検出感度	0.14 ng/ml			
検出範囲	0.391 ng/ml - 25 ng/ml			
添加回収試験	101 %			
全工程の試験時間	4h 00m			
ステップ	Multiple steps standard assay			
種交差性	交差種: Human			
製品の概要	Abcam's Complement C6 Human <i>in vitro</i> ELISA (Enzyme-Linked Immunosorbent Assay) kit is designed for the quantitative measurement of C6 in Human plasma, serum, saliva, urine, milk, and cell culture supernatants.			

A Complement C6 specific antibody has been precoated onto 96-well plates and blocked. Standards or test samples are added to the wells and subsequently a Complement C6 specific biotinylated detection antibody is added and then followed by washing with wash buffer. Streptavidin-Peroxidase Conjugate is added and unbound conjugates are washed away with wash buffer. TMB is then used to visualize Streptavidin-Peroxidase enzymatic reaction. TMB is catalyzed by Streptavidin-Peroxidase to produce a blue color product that changes into yellow after adding acidic stop solution. The density of yellow coloration is directly proportional to the amount of Complement C6 captured in plate.

The entire kit may be stored at -20°C for long term storage before reconstitution - Avoid repeated freeze-thaw cycles.

試験プラットフォーム

Microplate

製品の特性

保存方法

Store at -20°C. Please refer to protocols.

内容	1 x 96 tests
100X Streptavidin-Peroxidase Conjugate	1 x 80µl
10X Diluent N Concentrate	1 x 30ml
20X Wash Buffer Concentrate	2 x 30ml
50X Biotinylated Human Complement C6 Antibody	1 x 120µl
Chromogen Substrate	1 x 7ml
Complement C6 Microplate (12 x 8 well strips)	1 unit
Complement C6 Standard	1 vial
Sealing Tapes	3 units
Stop Solution	1 x 11ml

機能

Constituent of the membrane attack complex (MAC) that plays a key role in the innate and adaptive immune response by forming pores in the plasma membrane of target cells.

関連疾患

Defects in C6 are the cause of complement component 6 deficiency (C6D) [MIM:612446]. A rare defect of the complement classical pathway associated with susceptibility to severe recurrent infections, predominantly by *Neisseria gonorrhoeae* or *Neisseria meningitidis*.

配列類似性

Belongs to the complement C6/C7/C8/C9 family.
Contains 1 EGF-like domain.
Contains 2 Kazal-like domains.
Contains 1 LDL-receptor class A domain.
Contains 1 MACPF domain.
Contains 2 Sushi (CCP/SCR) domains.
Contains 3 TSP type-1 domains.

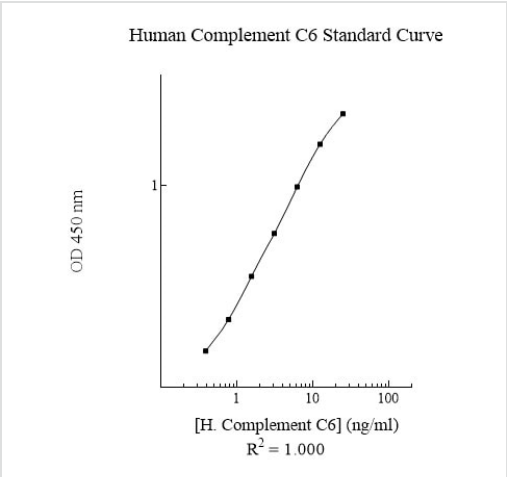
翻訳後修飾

All cysteine residues are assumed to be cross-linked to one another. Individual modules containing an even number of conserved cysteine residues are supposed to have disulfide linkages only within the same module.

細胞内局在

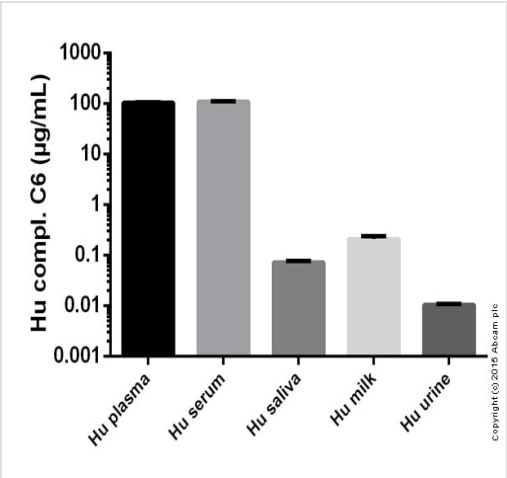
Secreted.

画像



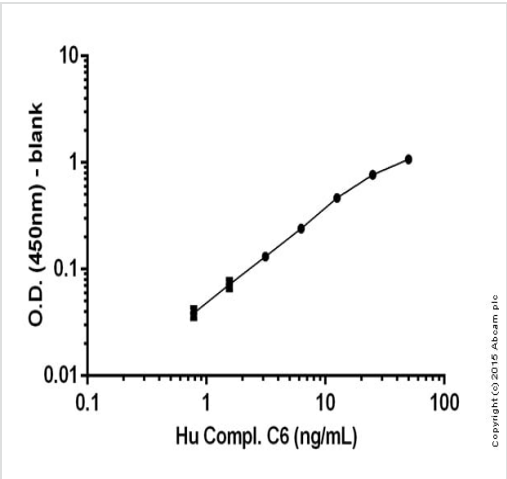
Human Complement C6 typical standard curve

Representative Standard Curve using ab125965.



Complement C6 measured in various biofluids showing quantity (microgram) per mL of sample tested

125965 Complement C6 Human ELISA Kit
(AssayPro)



Colorimetric standard curve: mean of duplicates (+/-) with background readings subtracted

125965 Complement C6 Human ELISA Kit
(AssayPro)

Please note: All products are "FOR RESEARCH USE ONLY. NOT FOR USE IN DIAGNOSTIC PROCEDURES"

Our Abpromise to you: Quality guaranteed and expert technical support

- Replacement or refund for products not performing as stated on the datasheet
- Valid for 12 months from date of delivery
- Response to your inquiry within 24 hours

- We provide support in Chinese, English, French, German, Japanese and Spanish
- Extensive multi-media technical resources to help you
- We investigate all quality concerns to ensure our products perform to the highest standards

If the product does not perform as described on this datasheet, we will offer a refund or replacement. For full details of the Abpromise, please visit <https://www.abcam.co.jp/abpromise> or contact our technical team.

Terms and conditions

- Guarantee only valid for products bought direct from Abcam or one of our authorized distributors