

Human Complement C5 ELISA Kit ab125963

9 References 画像数 2

製品の概要

製品名	Human Complement C5 ELISA Kit			
検出方法	Colorimetric			
再現性	Intra-Assay (同時再現性)			
	サンプル	N	平均値	SD
	Overall			CV%
				5.6%
	Inter-Assay (日差再現性)			
	サンプル	N	平均値	SD
	Overall			CV%
				10.1%
サンプルの種類	Cell culture supernatant, Saliva, Milk, Serum, Plasma, Cerebral Spinal Fluid			
アッセイタイプ	Sandwich (quantitative)			
検出感度	53 pg/ml			
検出範囲	0.156 ng/ml - 10 ng/ml			
添加回収試験	101 %			
全工程の試験時間	4h 00m			
ステップ	Multiple steps standard assay			
種交差性	交差種: Human			
製品の概要	Human Complement C5 ELISA kit (Enzyme-Linked Immunosorbent Assay) is designed for the quantitative measurement of C5 in human plasma, serum, saliva, milk, CSF and cell culture supernatants.			

A Complement C5 specific antibody has been precoated onto 96-well plates and blocked. Standards or test samples are added to the wells and subsequently a Complement C5 specific biotinylated detection antibody is added and then followed by washing with wash buffer. Streptavidin-Peroxidase Conjugate is added and unbound conjugates are washed away with wash buffer. TMB is then used to visualize Streptavidin-Peroxidase enzymatic reaction. TMB is catalyzed by Streptavidin-Peroxidase to produce a blue color product that changes into yellow after adding acidic stop solution. The density of yellow coloration is directly proportional to the amount of Complement C5 captured in plate.

The entire kit may be stored at -20°C for long term storage before reconstitution - Avoid repeated freeze-thaw cycles.

試験プラットフォーム

Microplate

製品の特性

保存方法

Store at -20°C. Please refer to protocols.

内容	1 x 96 tests
100X Streptavidin-Peroxidase Conjugate	1 x 80µl
10X Diluent N Concentrate	1 x 30ml
20X Wash Buffer Concentrate	2 x 30ml
50X Biotinylated Human Complement C5 Antibody	1 x 120µl
Chromogen Substrate	1 x 7ml
Complement C5 Microplate (12 x 8 well strips)	1 unit
Complement C5 Standard	1 vial
Sealing Tapes	3 units
Stop Solution	1 x 11ml

機能

Activation of C5 by a C5 convertase initiates the spontaneous assembly of the late complement components, C5-C9, into the membrane attack complex. C5b has a transient binding site for C6. The C5b-C6 complex is the foundation upon which the lytic complex is assembled. Derived from proteolytic degradation of complement C5, C5 anaphylatoxin is a mediator of local inflammatory process. It induces the contraction of smooth muscle, increases vascular permeability and causes histamine release from mast cells and basophilic leukocytes. C5a also stimulates the locomotion of polymorphonuclear leukocytes (chemokinesis) and direct their migration toward sites of inflammation (chemotaxis).

関連疾患

Defects in C5 are the cause of complement component 5 deficiency (C5D) [MIM:609536]. A rare defect of the complement classical pathway associated with susceptibility to severe recurrent infections, predominantly by *Neisseria gonorrhoeae* or *Neisseria meningitidis*.
Note=An association study of C5 haplotypes and genotypes in individuals with chronic hepatitis C virus infection shows that individuals homozygous for the C5_1 haplotype have a significantly higher stage of liver fibrosis than individuals carrying at least 1 other allele (PubMed:15995705).

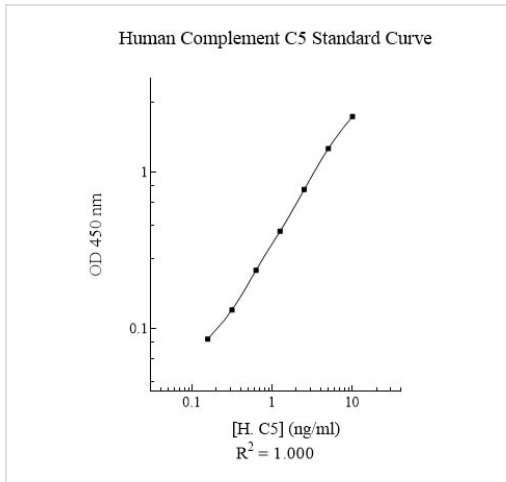
配列類似性

Contains 1 anaphylatoxin-like domain.
Contains 1 NTR domain.

細胞内局在

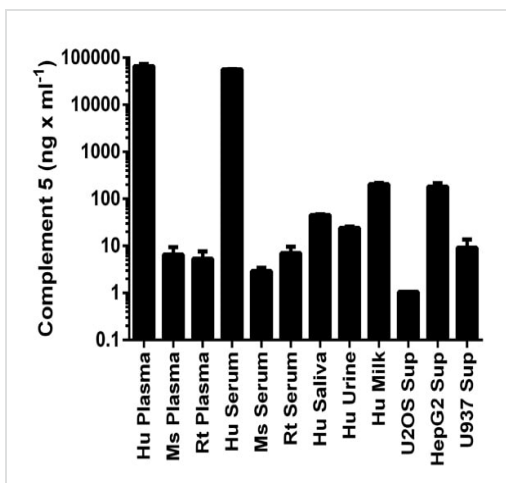
Secreted.

画像



Representative Standard Curve using ab125963

Human Complement C5 typical standard curve



Complement 5 measured in biological fluids and cell culture medium with background signal subtracted (duplicates +/- SD).

Sandwich ELISA - Complement C5 Human ELISA
Kit (ab125963)

Please note: All products are "FOR RESEARCH USE ONLY. NOT FOR USE IN DIAGNOSTIC PROCEDURES"

Our Abpromise to you: Quality guaranteed and expert technical support

- Replacement or refund for products not performing as stated on the datasheet
- Valid for 12 months from date of delivery
- Response to your inquiry within 24 hours
- We provide support in Chinese, English, French, German, Japanese and Spanish
- Extensive multi-media technical resources to help you
- We investigate all quality concerns to ensure our products perform to the highest standards

If the product does not perform as described on this datasheet, we will offer a refund or replacement. For full details of the Abpromise, please visit <https://www.abcam.co.jp/abpromise> or contact our technical team.

Terms and conditions

- Guarantee only valid for products bought direct from Abcam or one of our authorized distributors