

Human Carcino Embryonic Antigen ELISA Kit (CEA) ab99992

★★★★★ [1 Abreviews](#) [11 References](#) [画像数 3](#)

製品の概要

製品名	Human Carcino Embryonic Antigen ELISA Kit (CEA)
検出方法	Colorimetric
サンプルの種類	Cell culture supernatant, Serum, Plasma
アッセイタイプ	Sandwich (quantitative)
検出感度	< 0.2 ng/ml
検出範囲	0.343 ng/ml - 250 ng/ml
添加回収試験	> 100 %

特定サンプルでの回収試験

サンプルの種類	平均 %	測定範囲
Cell culture supernatant	116.7	93% - 136%
Serum	145.6	135% - 156%
Plasma	103.8	82% - 124%

ステップ Multiple steps standard assay

種交差性 交差種: Human

製品の概要 Abcam's Carcinoembryonic Antigen (CEA) Human ELISA (Enzyme-Linked Immunosorbent Assay) kit is an *in vitro* enzyme-linked immunosorbent assay for the quantitative measurement of Human CEA in serum, plasma, and cell culture supernatants.

This assay employs an antibody specific for Human CEA coated on a 96-well plate. Standards and samples are pipetted into the wells and CEA present in a sample is bound to the wells by the immobilized antibody. The wells are washed and biotinylated anti-Human CEA antibody is added. After washing away unbound biotinylated antibody, HRP-conjugated streptavidin is pipetted to the wells. The wells are again washed, a TMB substrate solution is added to the wells and color develops in proportion to the amount of CEA bound. The Stop Solution changes the color from blue to yellow, and the intensity of the color is measured at 450 nm.

Get results in 90 minutes with Human Carcinoembryonic Antigen ELISA Kit (CD66e) ([ab183365](#)) from our SimpleStep ELISA® range.

特記事項 Optimization may be required with urine samples.

試験プラットフォーム Microplate

製品の特性

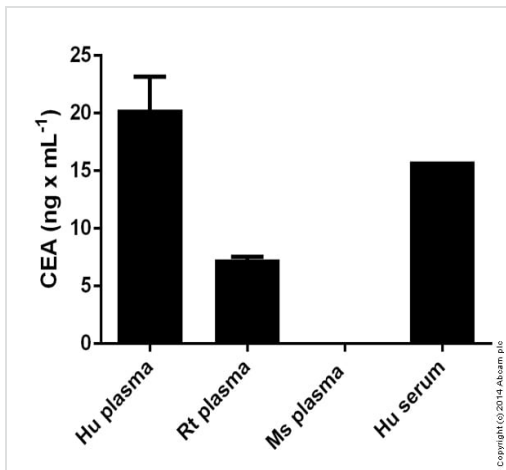
保存方法 Store at -20°C. Please refer to protocols.

内容	1 x 96 tests
1,000X HRP-Streptavidin Concentrate	1 x 200µl
20X Wash Buffer	1 x 25ml
5X Assay Diluent B	1 x 15ml
Assay Diluent A	1 x 30ml
Biotinylated anti-Human CEA	2 vials
CEA Microplate (12 x 8 well strips)	1 unit
Recombinant Human CEA Standard (lyophilized)	2 vials
Stop Solution	1 x 8ml
TMB One-Step Substrate Reagent	1 x 12ml

関連性 Carcino Embryonic Antigen (CEA) is synthesised during development in the fetal gut, and is re-expressed in increased amounts in intestinal carcinomas and several other tumors. Antibodies to CEA are useful in identifying the origin of various metastatic adenocarcinomas and in distinguishing pulmonary adenocarcinomas (60 to 70% are CEA+) from pleural mesotheliomas (rarely or weakly CEA+).

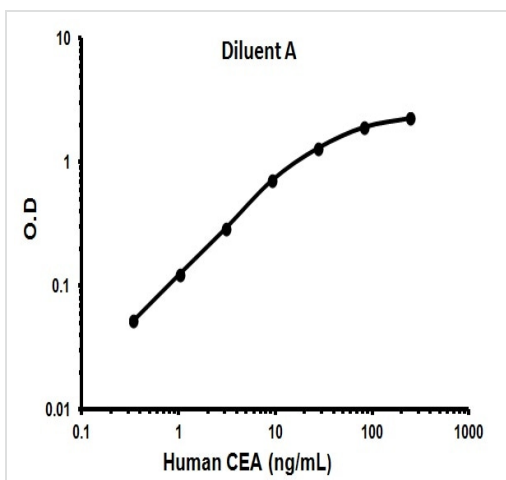
細胞内局在 Cell Membrane

画像



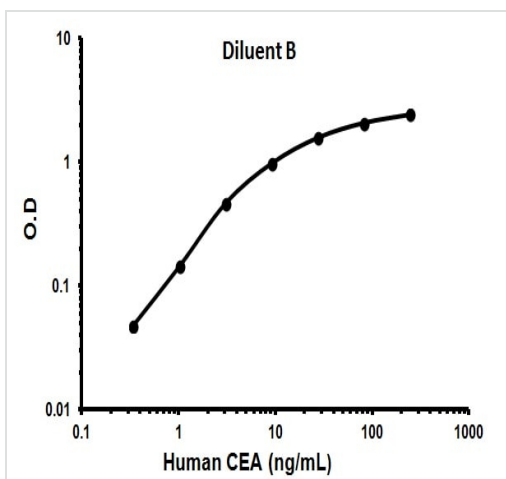
CEA measured in biological fluids showing quantity (ng) per mL of tested sample

Sandwich ELISA - Human CEA (ab99992)



Representative Standard Curve using ab99992.

Typical Standard Curve



Representative Standard Curve using ab99992.

Typical Standard Curve

Please note: All products are "FOR RESEARCH USE ONLY. NOT FOR USE IN DIAGNOSTIC PROCEDURES"

Our Abpromise to you: Quality guaranteed and expert technical support

- Replacement or refund for products not performing as stated on the datasheet
- Valid for 12 months from date of delivery
- Response to your inquiry within 24 hours

- We provide support in Chinese, English, French, German, Japanese and Spanish
- Extensive multi-media technical resources to help you
- We investigate all quality concerns to ensure our products perform to the highest standards

If the product does not perform as described on this datasheet, we will offer a refund or replacement. For full details of the Abpromise, please visit <https://www.abcam.co.jp/abpromise> or contact our technical team.

Terms and conditions

- Guarantee only valid for products bought direct from Abcam or one of our authorized distributors