

# Human C Reactive Protein ELISA Kit (CRP) ab99995

33 References    画像数 2

## 製品の概要

製品名	Human C Reactive Protein ELISA Kit (CRP)
検出方法	Colorimetric
サンプルの種類	Cell culture supernatant, Serum, Plasma
アッセイタイプ	Sandwich (quantitative)
検出感度	< 2 pg/ml
検出範囲	34.29 pg/ml - 25000 pg/ml
添加回収試験	> 100 %

特定サンプルでの回収試験

サンプルの種類	平均 %	測定範囲
Cell culture supernatant	106.2	95% - 116%
Serum	116.7	106% - 127%
Plasma	102.2	93% - 112%

ステップ Multiple steps standard assay

種交差性 交差種: Human

製品の概要 Abcam's C Reactive Protein (CRP) Human ELISA (Enzyme- Linked Immunosorbent Assay) kit is an *in vitro* enzyme-linked immunosorbent assay for the quantitative measurement of Human CRP in serum, plasma, cell culture supernatants.

This assay employs an antibody specific for Human CRP coated on a 96-well plate. Standards and samples are pipetted into the wells and CRP present in a sample is bound to the wells by the immobilized antibody. The wells are washed and biotinylated anti-Human CRP antibody is added. After washing away unbound biotinylated antibody, HRP-conjugated streptavidin is pipetted to the wells. The wells are again washed, a TMB substrate solution is added to the wells and color develops in proportion to the amount of CRP bound. The Stop Solution changes the color from blue to yellow, and the intensity of the color is measured at 450 nm.

Get results in 90 minutes with Human C Reactive Protein ELISA Kit (**ab181416**) from our SimpleStep ELISA® range.

**特記事項** Optimization may be required with urine samples.

**試験プラットフォーム** Microplate

## 製品の特性

**保存方法** Store at -20°C. Please refer to protocols.

内容	1 x 96 tests
20X Wash Buffer	1 x 25ml
300X HRP-Streptavidin Concentrate	1 x 200µl
5X Assay Diluent B	1 x 15ml
5X Assay Diluent D	2 x 15ml
CRP Microplate (12 x 8 well strips)	1 unit
Biotinylated anti-Human CRP	2 vials
Recombinant Human CRP Standard (lyophilized)	2 vials
Stop Solution	1 x 8ml
TMB One-Step Substrate Reagent	1 x 12ml

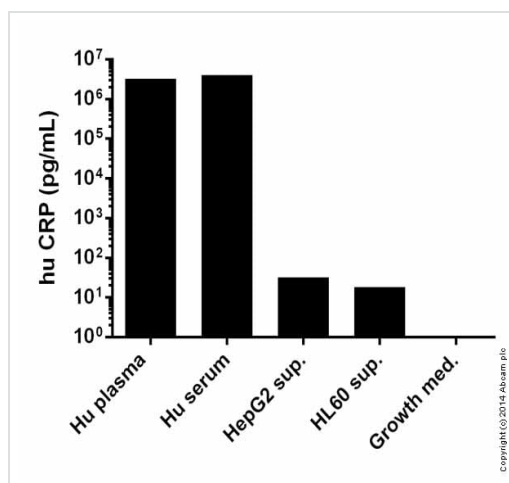
**機能** Displays several functions associated with host defense: it promotes agglutination, bacterial capsular swelling, phagocytosis and complement fixation through its calcium-dependent binding to phosphorylcholine. Can interact with DNA and histones and may scavenge nuclear material released from damaged circulating cells.

**組織特異性** Found in plasma.

**配列類似性** Belongs to the pentaxin family.  
Contains 1 pentaxin domain.

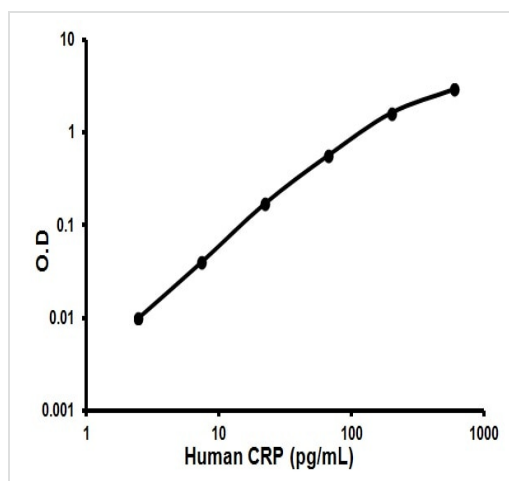
**細胞内局在** Secreted.

## 画像



huCRP measured in biological fluids showing quantity (pg) per mL of sample tested.

Sandwich ELISA- hu CRP (ab99995)



Representative Standard Curve using ab99995.

Typical Standard Curve

**Please note:** All products are "FOR RESEARCH USE ONLY. NOT FOR USE IN DIAGNOSTIC PROCEDURES"

### Our Abpromise to you: Quality guaranteed and expert technical support

- Replacement or refund for products not performing as stated on the datasheet
- Valid for 12 months from date of delivery
- Response to your inquiry within 24 hours
- We provide support in Chinese, English, French, German, Japanese and Spanish
- Extensive multi-media technical resources to help you
- We investigate all quality concerns to ensure our products perform to the highest standards

If the product does not perform as described on this datasheet, we will offer a refund or replacement. For full details of the Abpromise, please visit <https://www.abcam.co.jp/abpromise> or contact our technical team.

## Terms and conditions

---

- Guarantee only valid for products bought direct from Abcam or one of our authorized distributors