

Human BMP5 ELISA Kit ab119583

1 References 画像数 1

製品の概要

製品名	Human BMP5 ELISA Kit			
検出方法	Colorimetric			
再現性	Intra-Assay (同時再現性)			
	サンプル	N	平均値	SD
	1	16	242pg/ml	16.45
	2	16	1573pg/ml	69.21
	3	16	4363pg/ml	314.13
				CV%
				= 6.8%
				= 4.4%
				= 7.2%
	Inter-Assay (日差再現性)			
	サンプル	N	平均値	SD
	1	24	266pg/ml	20.74
	2	24	1683pg/ml	82.46
	3	24	4290pg/ml	347.49
				CV%
				= 7.8%
				= 4.9%
				= 8.1%
サンプルの種類	Cell culture supernatant, Serum, Tissue			
アッセイタイプ	Sandwich (quantitative)			
検出感度	< 10 pg/ml			
検出範囲	156 pg/ml - 10000 pg/ml			
ステップ	Multiple steps standard assay			
種交差性	交差種: Human			
製品の概要	Abcam's Human BMP5 <i>in vitro</i> ELISA (Enzyme-Linked Immunosorbent Assay) kit is designed for the accurate quantitative measurement of Human BMP5 in cell culture supernatants, serum and bone tissue.			

A BMP5 specific mouse monoclonal antibody has been precoated onto 96-well plates. Standards and test samples are added to the wells and incubated. A biotinylated detection polyclonal

antibody from goat, specific for BMP5 is then added followed by washing with PBS or TBS buffer. Avidin-Biotin-Peroxidase Complex is added and unbound conjugates are washed away with PBS or TBS buffer. TMB is then used to visualize the HRP enzymatic reaction. TMB is catalyzed by HRP to produce a blue color product that changes into yellow after adding acidic stop solution. The density of yellow coloration is directly proportional to the Human BMP5 amount of sample captured in plate.

試験プラットフォーム

Microplate

製品の特長

保存方法

Store at -20°C. Please refer to protocols.

内容	ラベル	1 x 96 tests
ABC Diluent Buffer	Blue Cap	1 x 12ml
Antibody Diluent Buffer	Green Cap	1 x 12ml
Anti-Human BMP5 antibody Microplate (12 x 8 wells)		1 unit
Avidin-Biotin-Peroxidase Complex (ABC)		1 x 100µl
Biotinylated anti-Human BMP5 antibody		1 x 100µl
Lyophilized recombinant Human BMP5 standard		2 x 10ng
Plate Seal		1 x 4 units
Sample Diluent Buffer	Green Cap	1 x 30ml
TMB Color Developing Agent	Amber Bottle	1 x 10ml
TMB Stop Solution	Yellow Cap	1 x 10ml
Wash Buffer (25X)		1 x 20ml

機能

Induces cartilage and bone formation.

組織特異性

Expressed in the lung and liver.

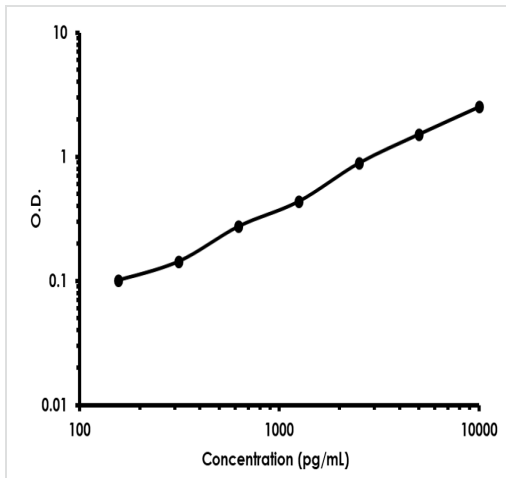
配列類似性

Belongs to the TGF-beta family.

細胞内局在

Secreted.

画像



Representative Standard Curve using ab119583.

Typical Standard Curve

Please note: All products are "FOR RESEARCH USE ONLY. NOT FOR USE IN DIAGNOSTIC PROCEDURES"

Our Abpromise to you: Quality guaranteed and expert technical support

- Replacement or refund for products not performing as stated on the datasheet
- Valid for 12 months from date of delivery
- Response to your inquiry within 24 hours
- We provide support in Chinese, English, French, German, Japanese and Spanish
- Extensive multi-media technical resources to help you
- We investigate all quality concerns to ensure our products perform to the highest standards

If the product does not perform as described on this datasheet, we will offer a refund or replacement. For full details of the Abpromise, please visit <https://www.abcam.co.jp/abpromise> or contact our technical team.

Terms and conditions

- Guarantee only valid for products bought direct from Abcam or one of our authorized distributors